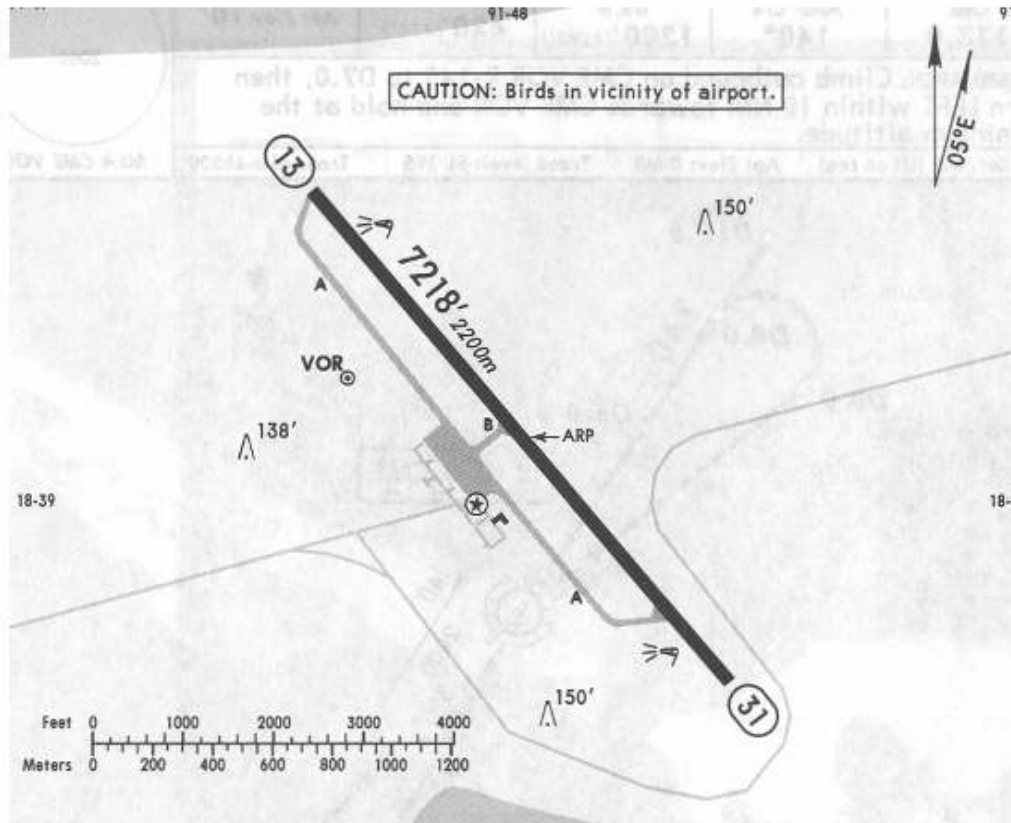


26 SEP 03

Apt Elev 10'

\*CARMEN Tower  
118.4


ADDITIONAL RUNWAY INFORMATION					
RWY			USABLE LENGTHS		WIDTH
			Threshold	Landing Beyond	
13	31	HIRL PAPI-L (angle 3.0°)			148'
					45m

DEPARTURE PROCEDURE: For departures and  
MCAs see Ciudad Del Carmen 10-3/10-3A.

NOT TO BE USED FOR ACTUAL NAVIGATION