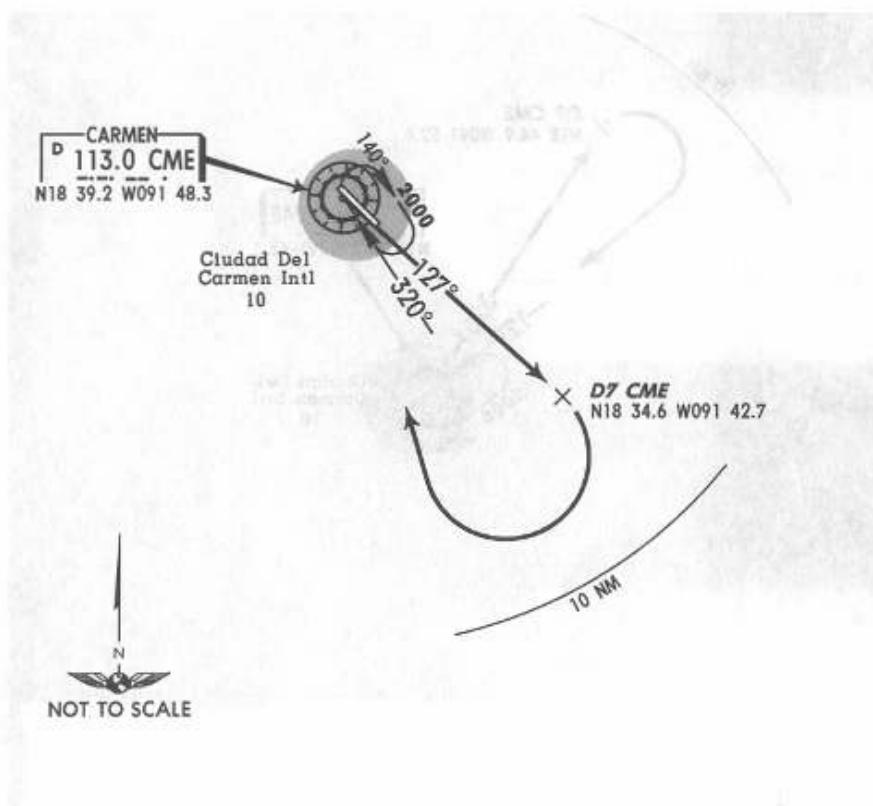


TRANS LEVEL: FL 195
TRANS ALT: 18500'

26 SEP 03

DEPARTURE RWY 13
CARMEN ONE ALFA (CME1A)



DEPARTURE

Climb on CME R-127 until D7 CME. Then turn RIGHT within 10 NM to CME VOR and depart at the MCA of the assigned route or in accordance with ATC instructions.
MCA: 2000' for all airways aligned with CME VOR.