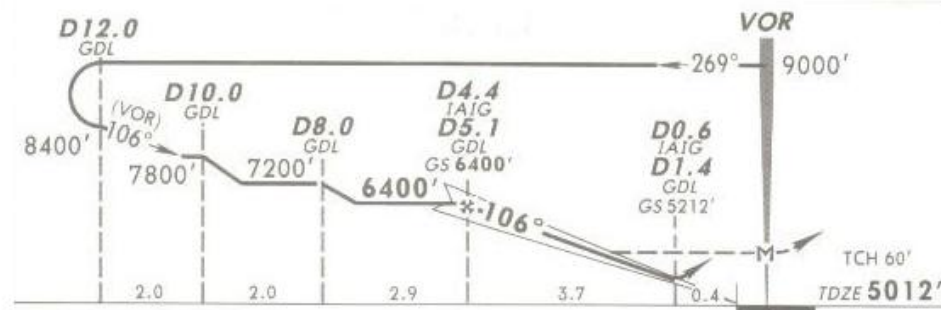
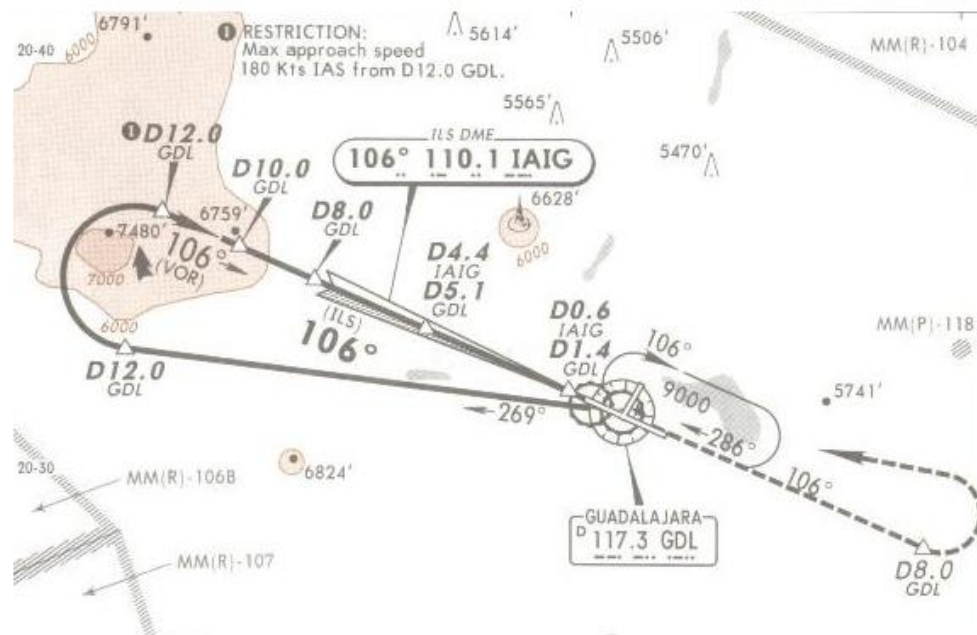


ATIS 127.9	GUADALAJARA Approach (R) 119.3 120.8	GUADALAJARA Tower 118.1	Ground 121.9	30 APR 10
LOC IAIG 110.1	Final Apch Crs 106°	GS D4.4 IAIG D5.1 GDL 6400' (1388')	ILS DA(H) Refer to Minimums	Apt Elev 5016' TDZE 5012'



**MISSED APCH:** Climb outbound via GDL VOR R-106 to D8.0 GDL then turn LEFT within 10 NM to intercept inbound GDL VOR R-082 to minimum holding altitude.

Alt Set: MB (IN on req) TDZ Elev: 171 MB Trans level: FL 195 Trans alt: 18500'  
1. ILS DME usable for aircraft with accurate instrument reading within 0.2 NM.

NOT TO BE USED FOR ACTUAL NAVIGATION