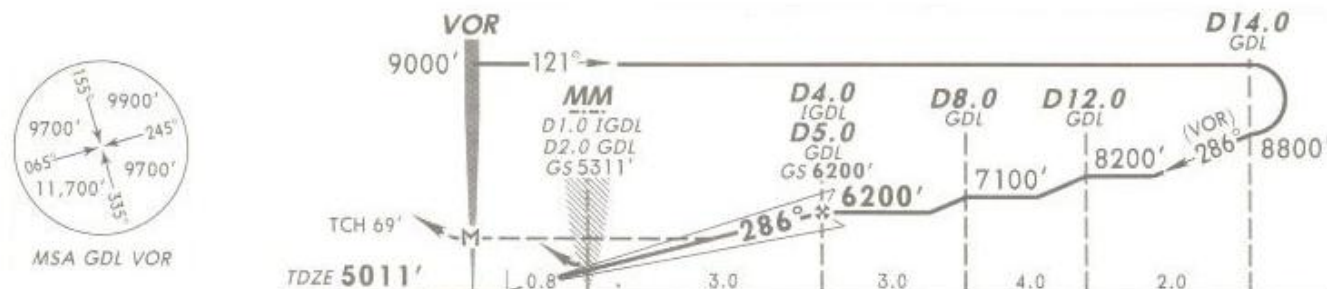
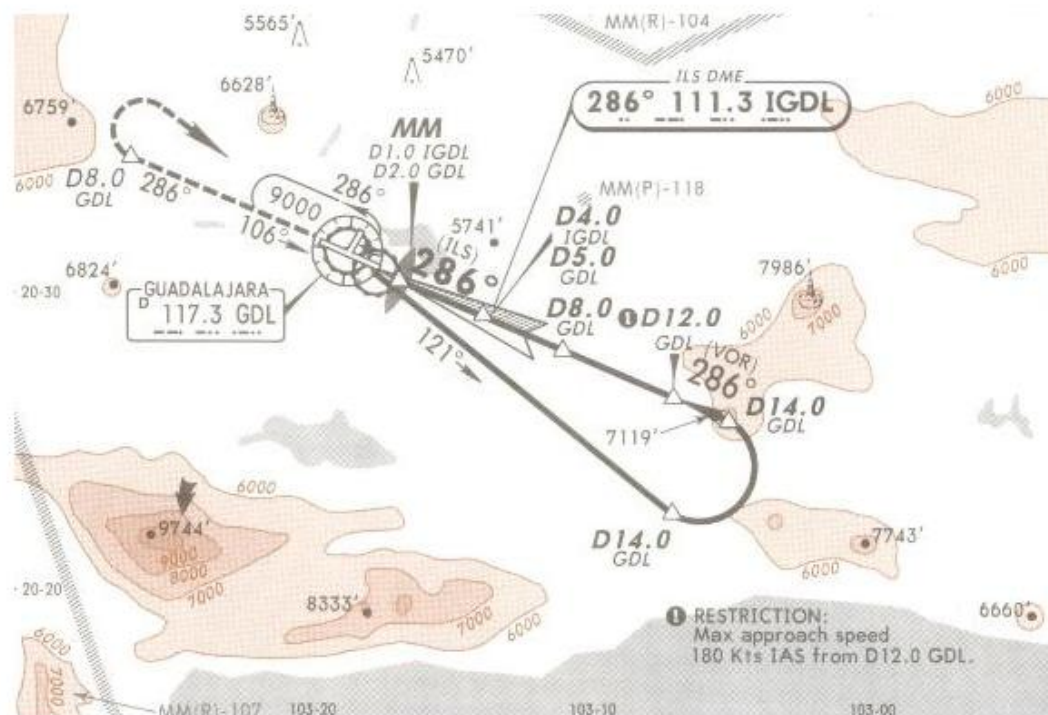


ATIS 127.9	GUADALAJARA Approach (R) 119.3 120.8	GUADALAJARA Tower 118.1	Ground 121.9
---------------	---	----------------------------	-----------------

2 APR 10
Eff 8 Apr

LOC IGDL 111.3	Final Apch Crs 286°	GS D4.0 IGDL D5.0 GDL 6200' (1189')	ILS DA(H) Refer to Minimums	Apt Elev 5016' TDZE 5011'
----------------------	---------------------------	--	--------------------------------------	------------------------------



MISSED APCH: Climb outbound via GDL VOR R-286 to D8.0 GDL, turn RIGHT within 10 NM, proceed to GDL VOR to minimum holding altitude.

Alt Set: MB (IN on req) TDZ Elev: 171 MB Trans level: FL 195 Trans alt: 18500'
1. ILS DME usable for aircraft with accurate instrument reading within 0.2 NM.

NOT TO BE USED FOR ACTUAL NAVIGATION