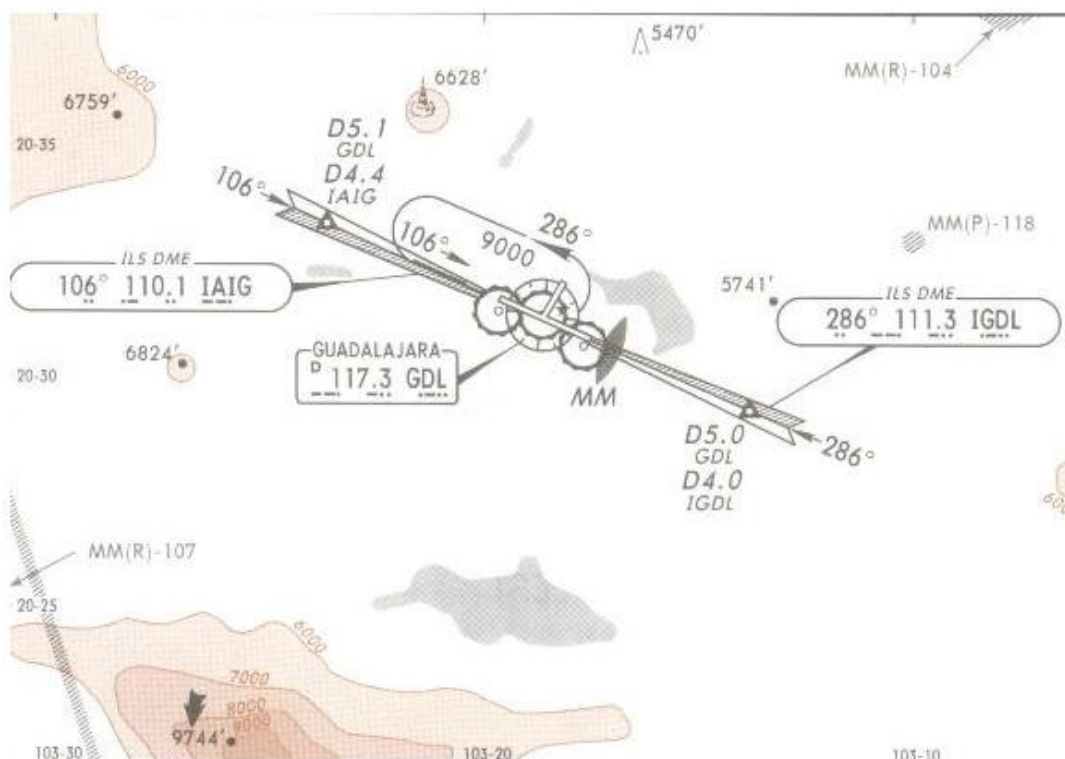


ATIS 127.9	GUADALAJARA Approach (R) 119.3 120.8	GUADALAJARA Tower 118.1	Ground 121.9
---------------	---	----------------------------	-----------------

2 APR 10
Eff 8 Apr

RADAR	Final Apch Crs By ATC	Minimum Alt No FAF	MDA(H) Refer to Minimums	Apt Elev 5016' TDZE - See below
-------	-----------------------------	-----------------------	--------------------------------	------------------------------------



MSA GDL VOR

MISSED APCH:

Runway 10: Climb outbound on GDL VOR R-106 to D8.0 GDL, turn LEFT within 10 NM, proceed to GDL VOR to the minimum holding altitude.

Runway 28: Climb outbound on GDL VOR R-286 to D8.0 GDL, turn RIGHT within 10 NM of GDL VOR, proceed to the minimum holding altitude.

Missed Approach-See below.

Alt Set: MB (IN on req) APT Elev: 171 MB Trans level: FL 195 Trans alt: 18500
1. In case of lost communications for one minute during vectors to final approach or 30 seconds on final, proceed direct to GDL VOR at the last assigned altitude or at 9000' whichever is higher and enter the holding pattern, LEFT turns, and tune in the emergency freq. 121.5 or Tower freq. 118.1.