

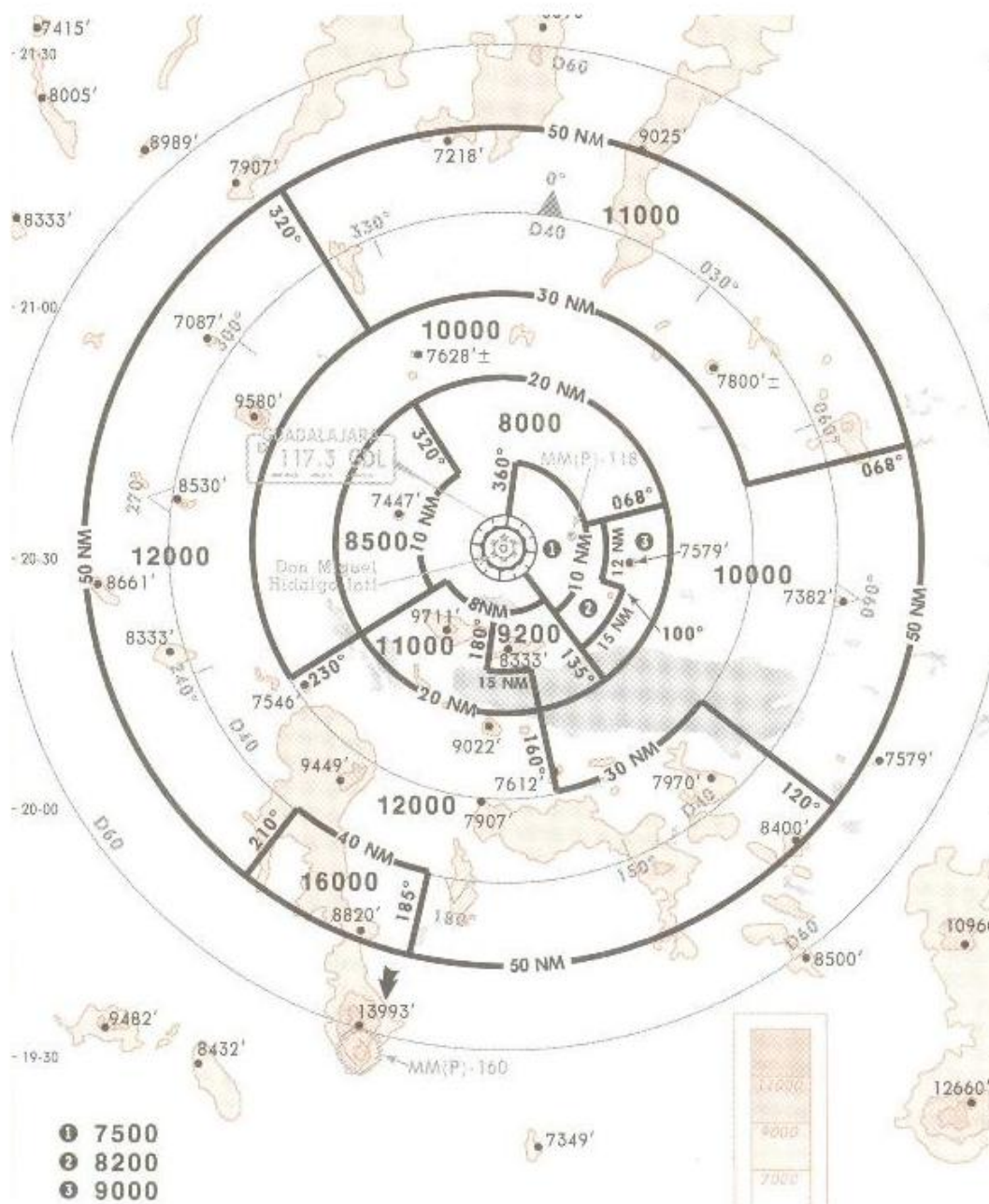
GUADALAJARA Approach (R)

Apt Elev

8 FEB 08
Eff 14 Feb

119.3 120.8

5016'



Alt Set: MB (IN on req) Trans level: FL 195 Trans alt: 18500'

1. These are the lowest MVAs that can be assigned by the controller in a section when radar control procedures (vectors) are applied, without affecting routes and procedures with lower minimums.

2. All aircraft operating under VFR within this TMA should have transponder mode 3 A/C with 4096 code capabilities.

NOT TO BE USED FOR ACTUAL NAVIGATION