

Apt Elev
5016'

Trans level: FL195 Trans alt: 18500'
Procedure authorized only when ZAP operating.

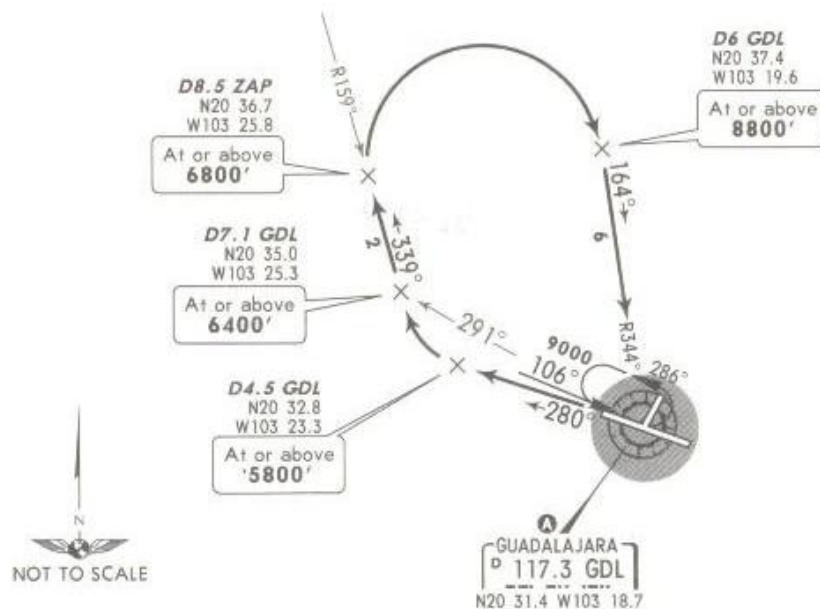
30 APR 10 |

DEPARTURE RWY 28
GUADALAJARA ONE CHARLIE (GDL1C)
SPEED: MAX 200 KT



A MINIMUM CROSSING ALTITUDE			
AGU	V-61W	J-42	7700
ZCL	V-26	J-25	7700
SLP			8100
BJX	V-32		8200
QET	V-14	UJ-14	8200
MLM	V-5	UJ-12	8500
UPN	V-3	UJ-3-7	8600
ZIH		UJ-27	9100
COL	V-61	J-25	10800
ZLO	V-26	UJ-11	10700
ZLO	V-26W		10600
PVR	V-14S	UJ-14S	8200
PVR	V-14	UJ-14	8200
PVR	V-14N	UJ-14N	8000
TNY	V-3-5	UJ-12	8300
MZT		UJ-3	8100
MZT		UJ-7	7200
DGO		UJ-27	7200

ZAPOPAN
D 113.4 ZAP
N20 45.0 W103 27.9



This SID requires a minimum climb gradient of 210' per NM to 6800'.

Gnd speed-KT	75	100	150	200	250	300
210' per NM	263	350	525	700	875	1050

INITIAL CLIMB

Climb on GDL R-280 to D4.5 GDL, turn RIGHT and intercept the ZAP R-159 inbound to D8.5 ZAP, turn RIGHT and intercept the GDL R-344 at D6 GDL, continue to GDL. Depart GDL in accordance with the MCA A of the assigned route or according to ATC instructions.

NOT TO BE USED FOR ACTUAL NAVIGATION