

2 APR 10

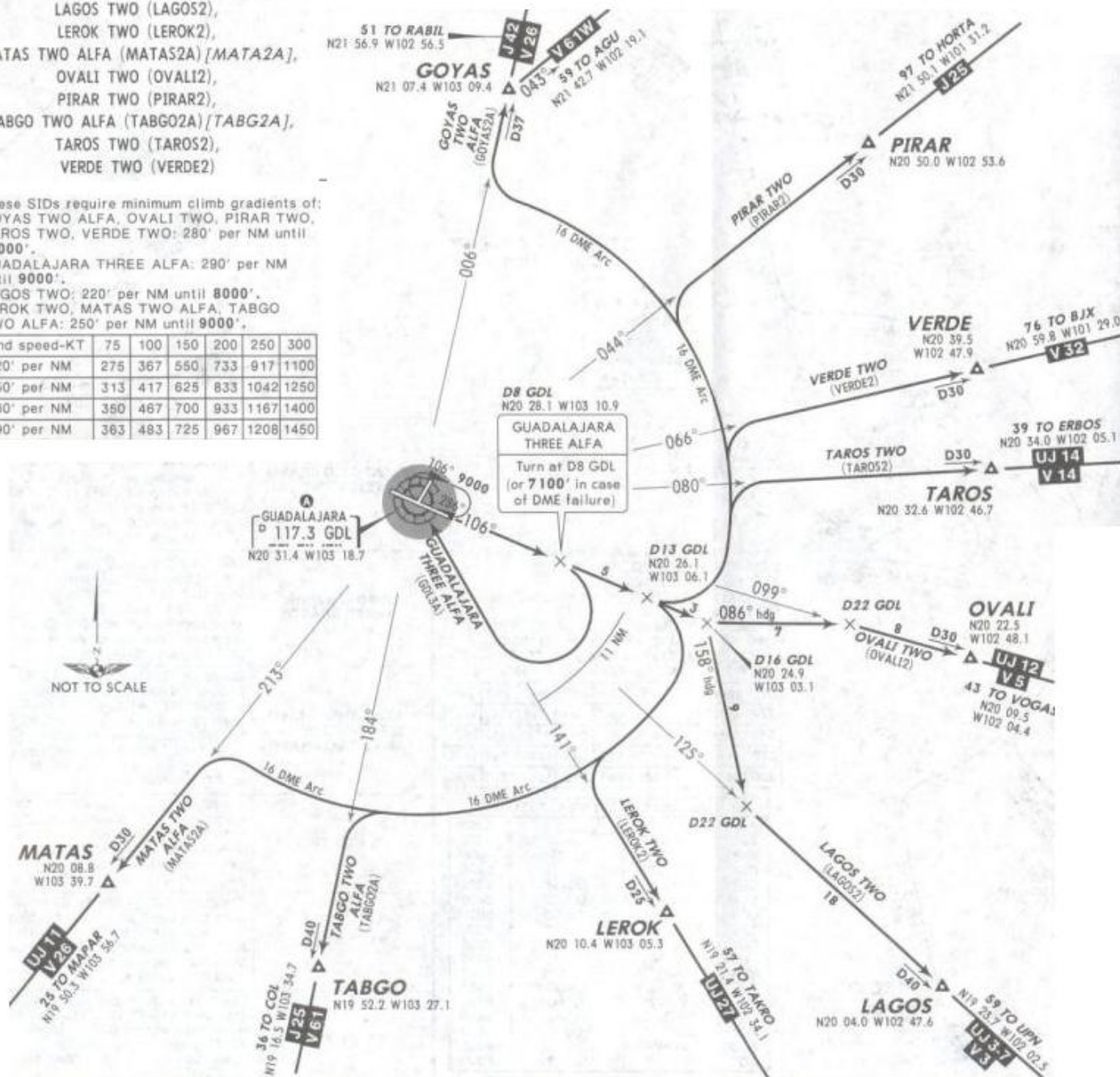
EFF 8 Apr

DEPARTURES RWY 10

GOYAS TWO ALFA (GOYAS2A) [GOYA2A],
GUADALAJARA THREE ALFA (GDL3A),
LAGOS TWO (LAGOS2),
LEROK TWO (LEROK2),
MATAS TWO ALFA (MATAS2A) [MATA2A],
OVALI TWO (OVALI2),
PIRAR TWO (PIRAR2),
TABGO TWO ALFA (TABGO2A) [TABG2A],
TAROS TWO (TAROS2),
VERDE TWO (VERDE2)

These SIDs require minimum climb gradients of:
GOYAS TWO ALFA, OVALI TWO, PIRAR TWO,
TAROS TWO, VERDE TWO: 280' per NM until
11000'.
GUADALAJARA THREE ALFA: 290' per NM
until 9000'.
LAGOS TWO: 220' per NM until 8000'.
LEROK TWO, MATAS TWO ALFA, TABGO
TWO ALFA: 250' per NM until 9000'.

Gnd speed-KT	75	100	150	200	250	300
220' per NM	275	367	550	733	917	1100
250' per NM	313	417	625	833	1042	1250
280' per NM	360	467	700	933	1167	1400
290' per NM	363	483	725	967	1208	1450



GOYAS TWO ALFA
PIRAR TWO
TAROS TWO
VERDE TWO

Climb via GDL R-106 to D13 GDL, then turn LEFT onto the GDL 16 DME Arc and intercept the corresponding radial from GDL for the assigned route to GOYAS, PIRAR, TAROS or VERDE and continue on the assigned route or according to ATC instructions.

GUADALAJARA
THREE
ALFA

Climb via GDL R-106 to D8 GDL (or 7100' in case of DME failure), then turn RIGHT within 11 NM to GDL and depart GDL in accordance with the MCA of the assigned route or according to ATC instructions.

LAGOS TWO

Climb via GDL R-106 to D16 GDL, then turn RIGHT to a 158° heading until intercepting GDL R-125 to LAGOS and continue on the assigned route or according to ATC instructions.

LEROK TWO
MATAS TWO ALFA
TABGO TWO ALFA

Climb via GDL R-106 to D13 GDL, then turn RIGHT onto the GDL 16 DME Arc and intercept the corresponding radial from GDL for the assigned route to LEROK, MATAS or TABGO and continue on the assigned route or according to ATC instructions.

OVALI TWO

Climb via GDL R-106 to D16 GDL, then turn LEFT to a 086° heading until intercepting GDL R-099 to OVALI and continue on the assigned route or according to ATC instructions.

NOT TO BE USED FOR ACTUAL NAVIGATION