

ATIS
127.9

GUADALAJARA Approach (R)
119.3 120.8

GUADALAJARA Tower
118.1

Ground
121.9

30 APR 10

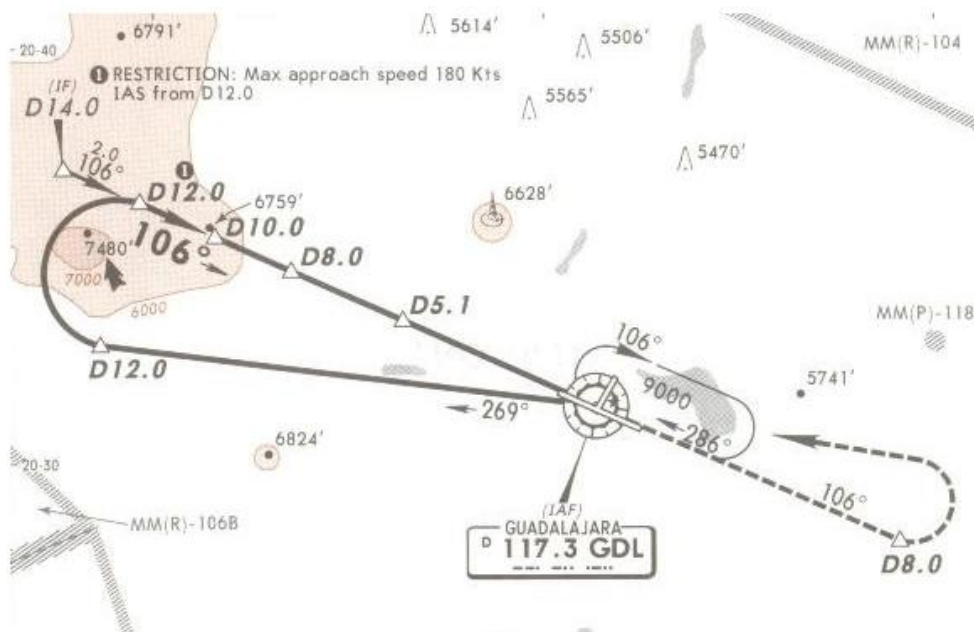
VOR
GDL
117.3

Final
Apch Crs
106°

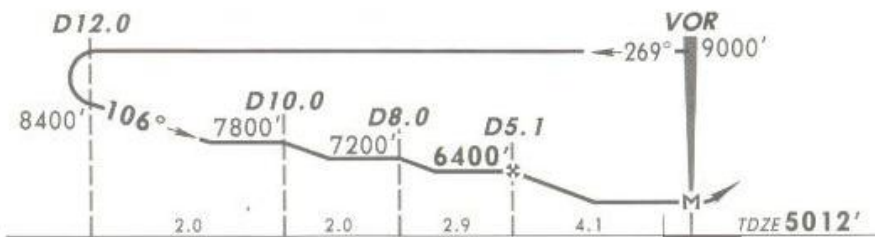
Minimum Alt
D5.1
6400' (1388')

MDA(H)
5500' (488')

Apt Elev 5016'
TDZE 5012'



MSA GDL VOR



MISSED APCH: Climb outbound via GDL VOR R-106 to D8.0 then turn LEFT within 10 NM to intercept inbound GDL VOR R-082 to minimum holding altitude.

Alt Set: MB (IN on req) TDZ Elev: 171 MB Trans level: FL 195 Trans alt: 18500'

NOT TO BE USED FOR ACTUAL NAVIGATION