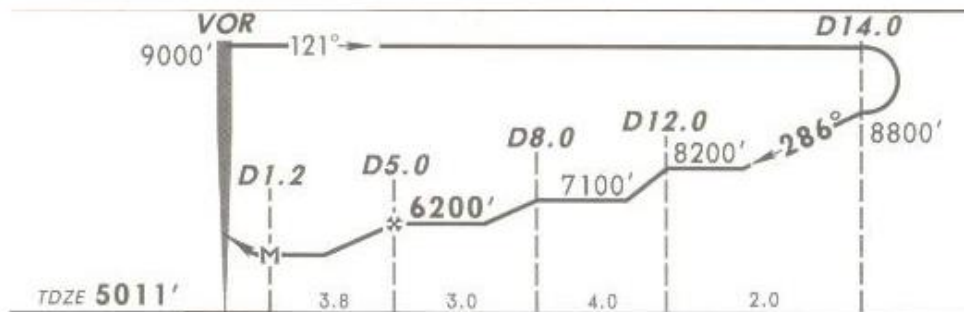
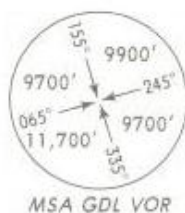
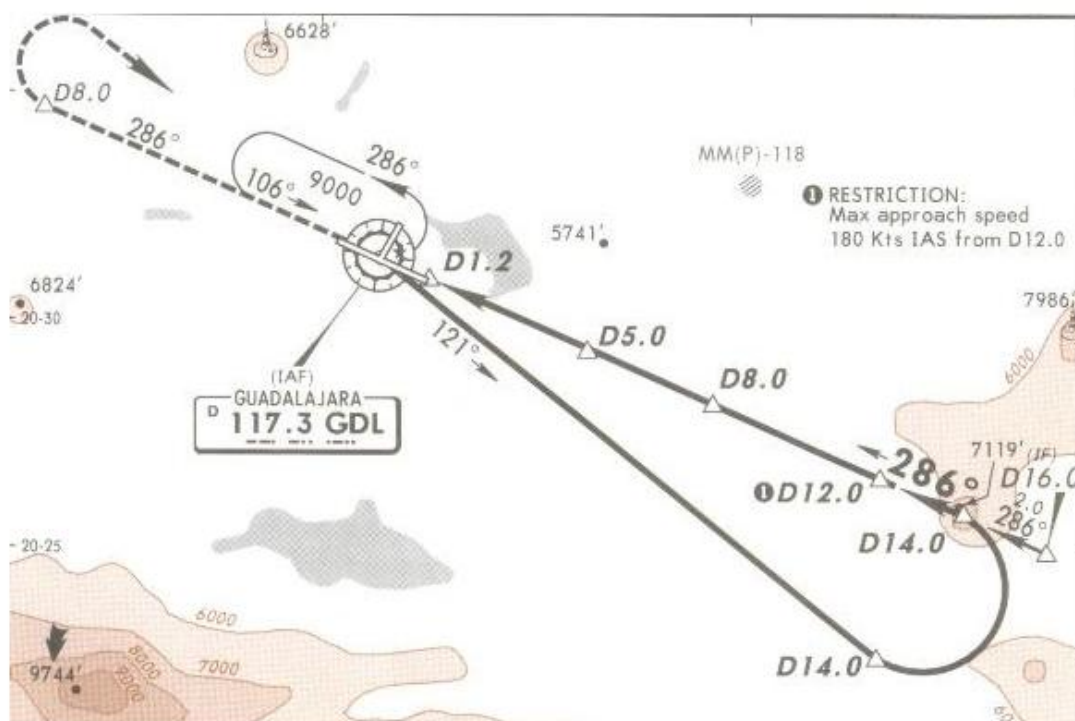


ATIS	GUADALAJARA Approach (R)	GUADALAJARA Tower	Ground
127.9	119.3 120.8	118.1	121.9

2 APR 10

Eff 8 Apr

VOR GDL	Final Apch Crs	Minimum Alt D5.0	MDA(H)	Apt Elev 5016'
117.3	286°	6200' (1189')	5500' (489')	TDZE 5011'



**MISSED APCH:** Climb on runway heading and proceed outbound via GDL VOR R-286 to D8.0, turn RIGHT within 10 NM, proceed to GDL VOR to the minimum holding altitude.

Alt Set: MB (IN on req) TDZ Elev: 171 MB Trans level: FL 195 Trans alt: 18500'

NOT TO BE USED FOR ACTUAL NAVIGATION