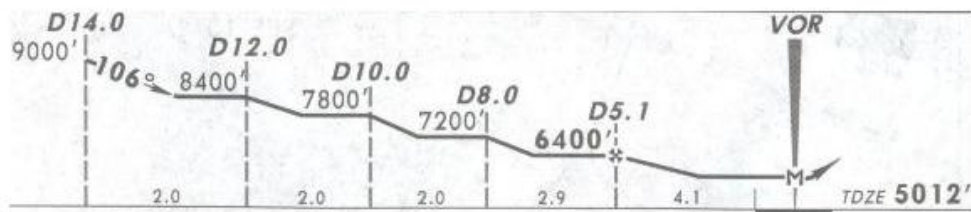
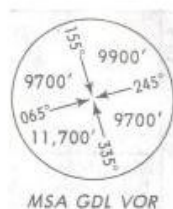
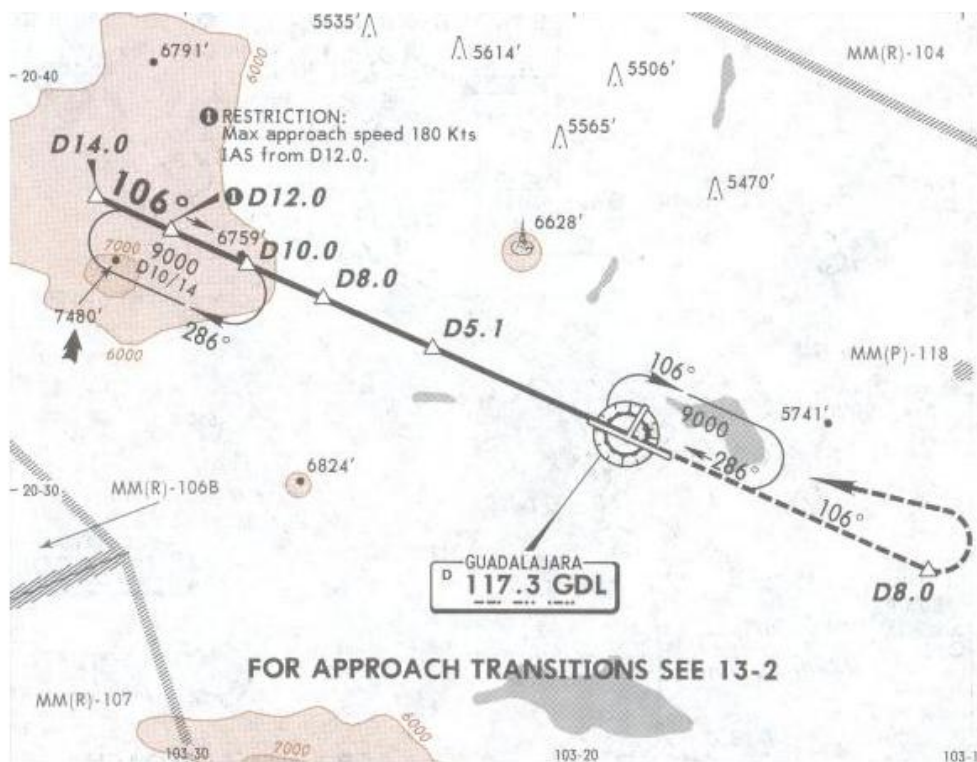


ATIS 127.9	GUADALAJARA Approach (R) 119.3 120.8	GUADALAJARA Tower 118.1
VOR GDL 117.3	Final Apch Crs 106°	Minimum Alt D5.1 6400' (1388')
		MDA(H) 5500' (488')
		Apt Elev 5016'
		TDZE 5012'

30 APR 10



MISSED APCH: Climb outbound via GDL VOR R-106 to D8.0 then turn LEFT within 10 NM to intercept inbound GDL VOR R-082 to minimum holding altitude.

Alt Set: MB (IN on req) TDZ Elev: 171 MB Trans level: FL 195 Trans alt: 18500'.
1. In case of DME failure at any point during the procedure, maintain last assigned altitude and proceed to the station in accordance with ATC instructions.

NOT TO BE USED FOR ACTUAL NAVIGATION