

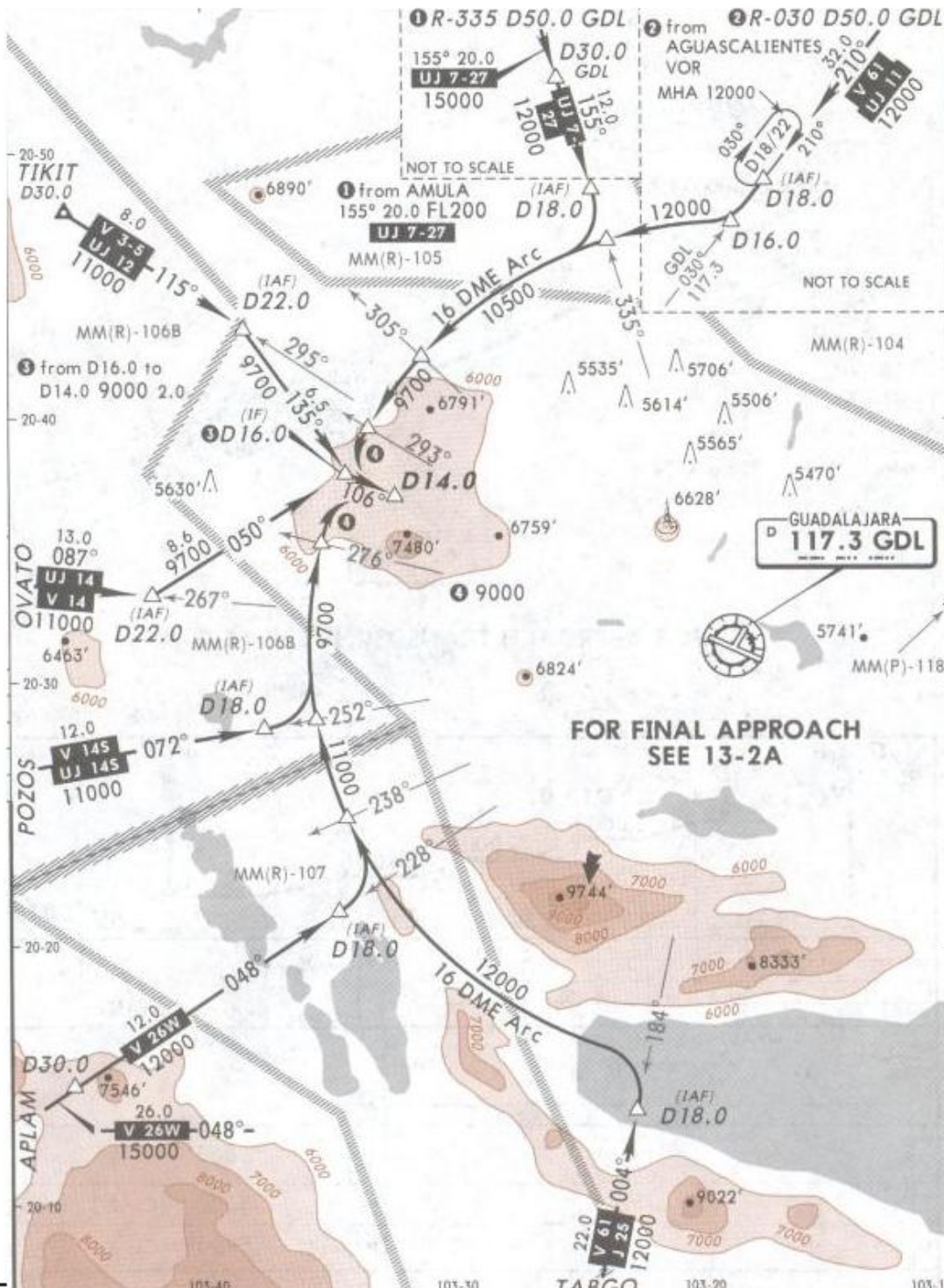
ATIS
127.9

GUADALAJARA Approach (R)
119.3 120.8

GUADALAJARA Tower
118.1

Ground
121.9

2 APR 10
Eff 8 Apr



MSA GDL VOR

Alt Set: MB (IN on req) TDZ Elev: 171 MB Trans level: FL 195 Trans alt: 18500'
1. In case of DME failure at any point during the procedure, maintain last assigned altitude and proceed to the station in accordance with ATC instructions.

NOT TO BE USED FOR ACTUAL NAVIGATION