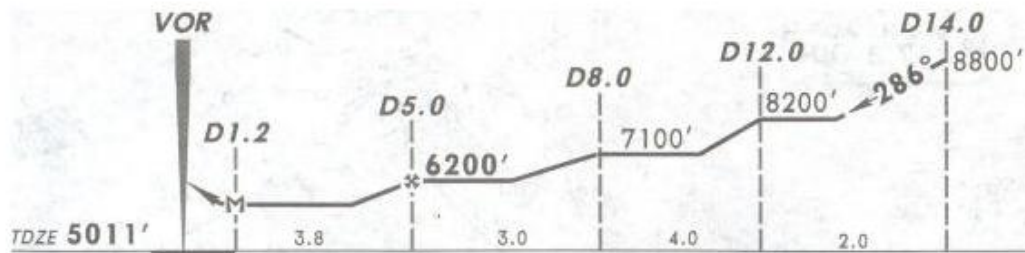
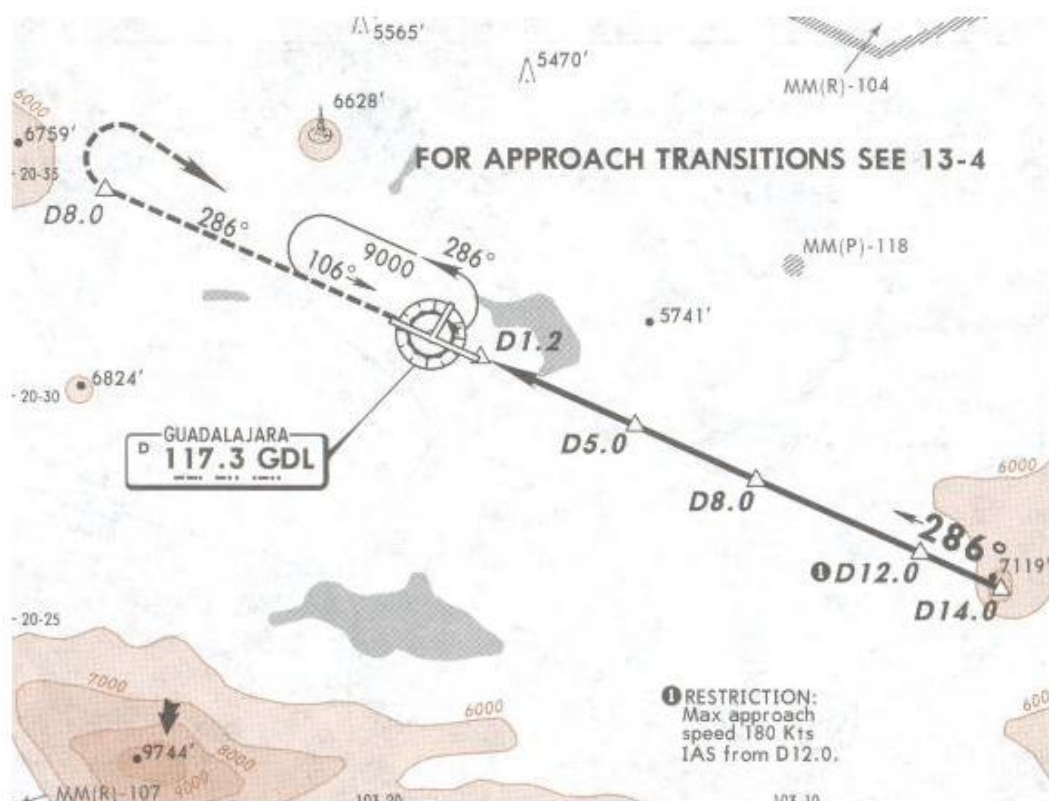


ATIS 127.9	GUADALAJARA Approach (R) 119.3 120.8	GUADALAJARA Tower 118.1	Ground 121.9
---------------	---	----------------------------	-----------------

2 APR 10
Eff 8 Apr

VOR GDL 117.3	Final Apch Crs 286°	Minimum Alt D5.0 6200' (1189')	MDA(H) 5500' (489')	Apf Elev 5016' TDZE 5011'
---------------------	---------------------------	--------------------------------------	------------------------	------------------------------



MISSED APCH: Climb outbound via GDL VOR R-286 to D8.0, turn RIGHT within 10 NM, proceed to GDL VOR to the minimum holding altitude.
Alt Set: M8 (IN on req) TDZ Elev: 171 M8 Trans level: FL 195 Trans alt: 18500'
1. In case of DME failure at any point during the procedure, maintain last assigned altitude and proceed to the station in accordance with ATC instructions.

NOT TO BE USED FOR ACTUAL NAVIGATION