

2 APR 10
Eff 8 Apr

ATIS

GUADALAJARA Approach (R)

GUADALAJARA Tower

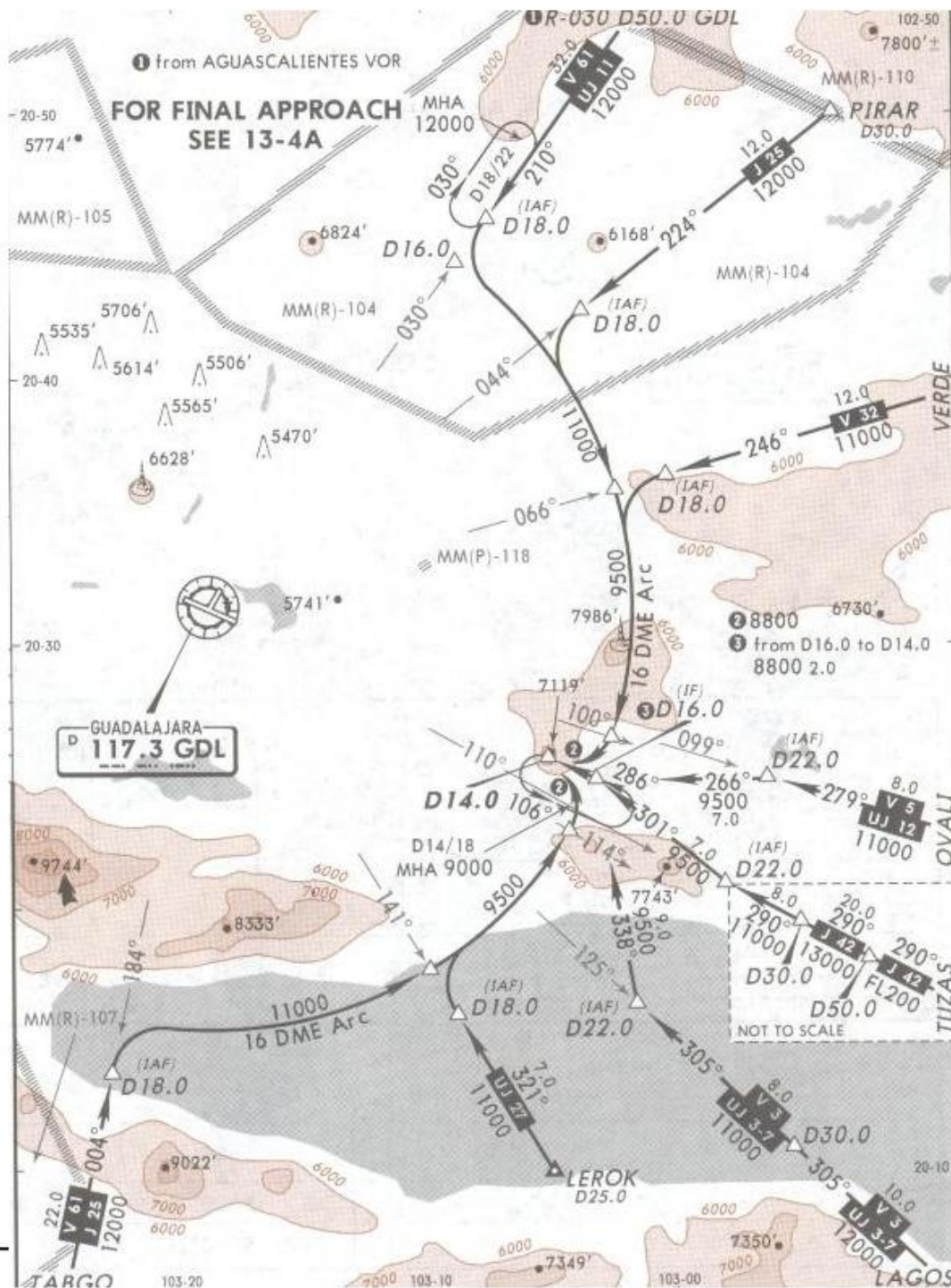
Ground

127.9

119.3 120.8

118.1

121.9



MSA GDL VOR

Alt Set: MB (IN on req) TDZ Elev: 171 MB Trans level: FL 195 Trans alt: 18500'

1. In case of DME failure at any point during the procedure, maintain last assigned altitude and proceed to the station in accordance with ATC instructions.

NOT TO BE USED FOR ACTUAL NAVIGATION