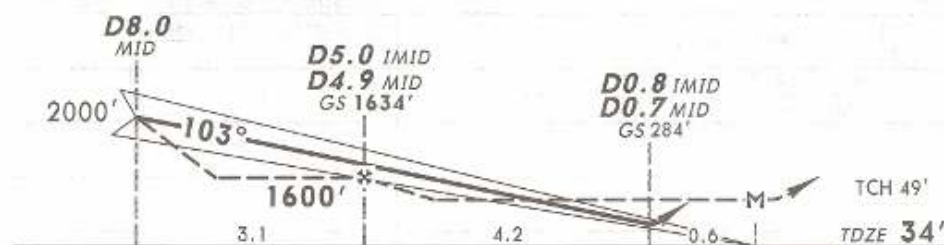
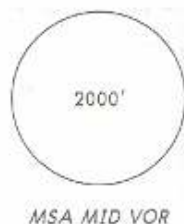
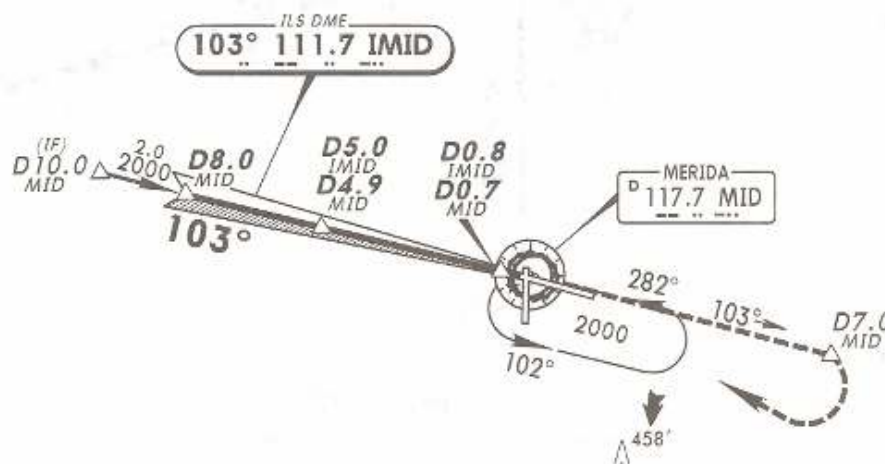


ATIS	MERIDA Approach (R)	MERIDA Tower
127.9	121.2	118.3

27 JUN 08
Eff 3 JUL

LOC IMID 111.7	Final Apch Crs 103°	GS D5.0 IMID D4.9 MID 1634' (1600')	ILS DA(H) (CONDITIONAL) 284' (250')	Apt Elev 38' TDZE 34'
----------------------	---------------------------	----------------------------------------------	----------------------------------------------	--------------------------



MISSED APCH: Climb outbound on MID VOR R-103 to D7.0 MID, then make a teardrop turn to the RIGHT within 10 NM to MID VOR at the minimum holding altitude.

Alt Set: MB (IN on req) TDZ Elev: 1 MB Trans level: FL 195 Trans alt: 18500'
1. ILS/DME usable with DME equipped aircraft with accurate instrument reading within 0.2 NM.