

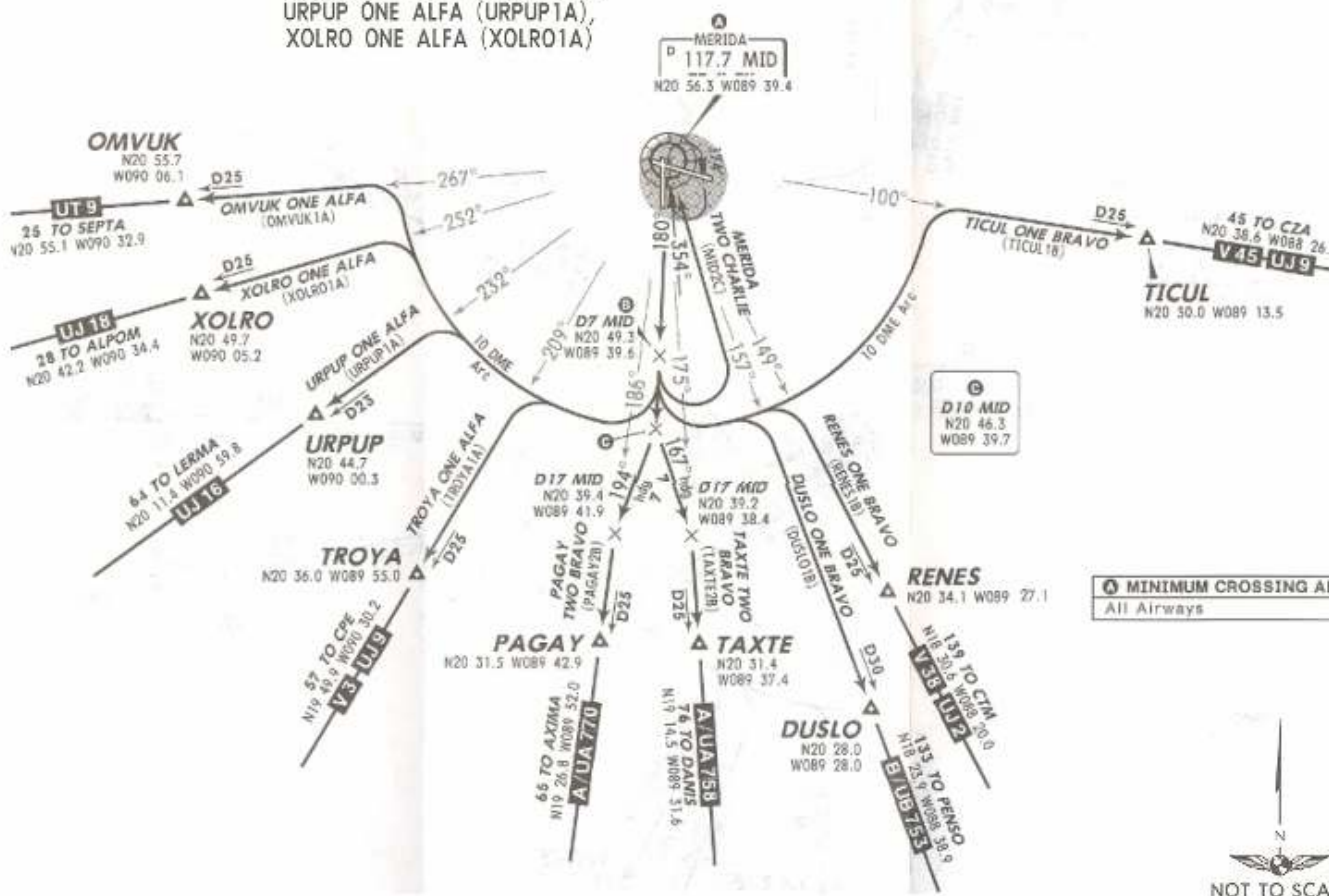
Apr Elev
38'

Trans level: FL195 Trans alt: 18500'

27 JUN 08
Eff 3 Jul

DEPARTURES RWY 17

DUSLO ONE BRAVO (DUSLO1B),
MERIDA TWO CHARLIE (MID2C),
OMVUK ONE ALFA (OMVUK1A),
PAGAY TWO BRAVO (PAGAY2B),
RENES ONE BRAVO (RENES1B),
TAXTE TWO BRAVO (TAXTE2B),
TICUL ONE BRAVO (TICUL1B),
TROYA ONE ALFA (TROYA1A),
URPUP ONE ALFA (URPUP1A),
XOLRO ONE ALFA (XOLRO1A)



SID	INITIAL CLIMB
DUSLO ONE BRAVO RENES ONE BRAVO TICUL ONE BRAVO	Climb on MID R-180 until D7 MID, then turn LEFT and proceed on MID 10 DME Arc to intercept the corresponding radial from MID to DUSLO, RENES or TICUL. Continue on the assigned route or in accordance with ATC instructions.
MERIDA TWO CHARLIE	Climb on MID R-180 to D7 MID (to 1300' in case of DME failure), turn LEFT within 10 NM to MID. Depart MID at the published MCA for the assigned route or in accordance with ATC instructions.
OMVUK ONE ALFA TROYA ONE ALFA URPUP ONE ALFA XOLRO ONE ALFA	Climb on MID R-180 until D7 MID, then turn RIGHT and proceed on MID 10 DME Arc to intercept the corresponding radial from MID to OMVUK, TROYA, URPUP or XOLRO. Continue on the assigned route or in accordance with ATC instructions.
PAGAY TWO BRAVO	Climb on MID R-180 to D10 MID and proceed on 194° heading to intercept MID R-186 to PAGAY. Continue on the assigned route or in accordance with ATC instructions.
TAXTE TWO BRAVO	Climb on MID R-180 to D10 MID and proceed on 167° heading to intercept MID R-175 to TAXTE. Continue on the assigned route or in accordance with ATC instructions.

NOT TO BE USED FOR ACTUAL NAVIGATION