

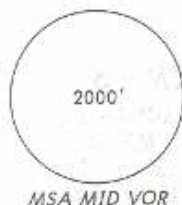
Apt Elev  
38'

Trans level: FL195

Trans alt: 18500'

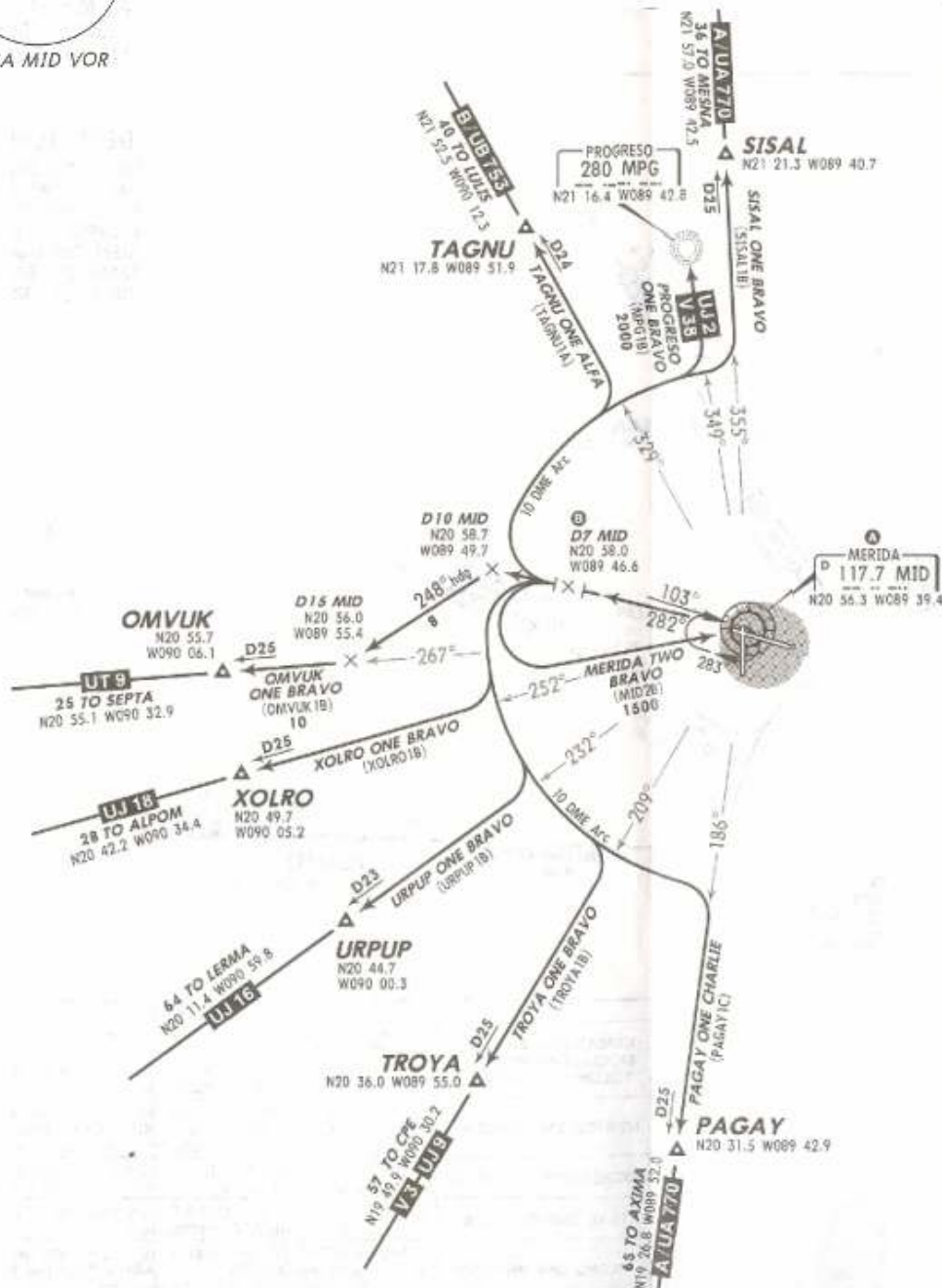
27 JUN 08

Eff 3 Jul



## DEPARTURES RWY 28

MERIDA TWO BRAVO (MID2B),  
OMVUK ONE BRAVO (OMVUK1B),  
PAGAY ONE CHARLIE (PAGAY1C),  
PROGRESO ONE BRAVO (MPG1B),  
SISAL ONE BRAVO (SISAL1B),  
TAGNU ONE ALFA (TAGNU1A),  
TROYA ONE BRAVO (TROYA1B),  
URPUP ONE BRAVO (URPUP1B),  
XOLRO ONE BRAVO (XOLRO1B)



**5**  
MERIDA TWO BRAVO  
Turn at D7 MID  
(or 1500' in case  
of DME failure)

**6** MINIMUM CROSSING ALTITUDE  
All Airways 2000



| SID              | INITIAL CLIMB  |
|------------------|--|
| MERIDA TWO BRAVO | Climb on MID R-282 to D7 MID (to 1500' in case of DME failure), turn LEFT within 10 NM to MID. Depart MID at the published MCA <b>6</b> for the assigned route or in accordance with ATC instructions. |
| OMVUK ONE BRAVO  | Climb on MID R-282 to D10 MID, then turn LEFT and proceed on 248° heading to intercept MID R-267 to OMVUK. Continue on the assigned route or in accordance with ATC instructions.                      |

| SID  | INITIAL CLIMB  |
|--|--|
| PAGAY ONE CHARLIE<br>TROYA ONE BRAVO<br>URPUP ONE BRAVO<br>XOLRO ONE BRAVO | Climb on MID R-282 until D7 MID, then turn LEFT and proceed on MID 10 DME Arc to intercept the corresponding radial from MID to PAGAY, TROYA, URPUP or XOLRO. Continue on the assigned route or in accordance with ATC instructions. |
| PROGRESO ONE BRAVO<br>SISAL ONE BRAVO<br>TAGNU ONE ALFA                    | Climb on MID R-282 until D7 MID, then turn RIGHT and proceed on MID 10 DME Arc to intercept the corresponding radial from MID to MPG, SISAL or TAGNU. Continue on the assigned route or in accordance with ATC instructions.         |

NOT TO BE USED FOR ACTUAL NAVIGATION