

Apt Elev
38'

Trans level: FL195

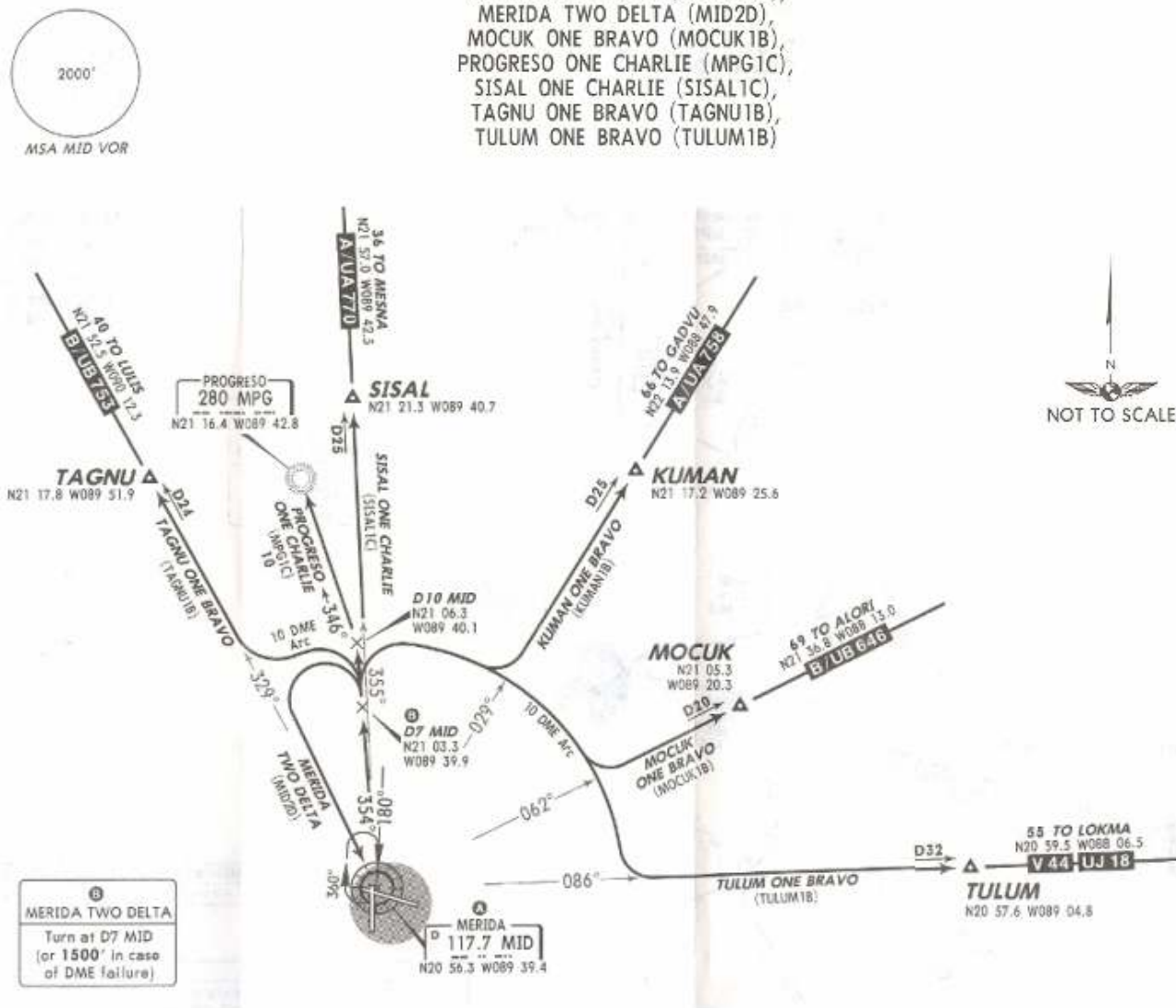
Trans alt: 18500'

27 JUN 08

Eff 3 Jul

DEPARTURES RWY 35

KUMAN ONE BRAVO (KUMAN1B),
MERIDA TWO DELTA (MID2D),
MOCUK ONE BRAVO (MOCUK1B),
PROGRESO ONE CHARLIE (MPG1C),
SISAL ONE CHARLIE (SISAL1C),
TAGNU ONE BRAVO (TAGNU1B),
TULUM ONE BRAVO (TULUM1B)



SID	INITIAL CLIMB
KUMAN ONE BRAVO MOCUK ONE BRAVO TULUM ONE BRAVO	Climb on MID R-354 until D7 MID, then turn RIGHT and proceed on MID 10 DME Arc to intercept the corresponding radial from MID to KUMAN, MOCUK or TULUM. Continue on the assigned route or in accordance with ATC instructions.
MERIDA TWO DELTA	Climb on MID R-354 to D7 MID (to 1500' in case of DME failure), then turn LEFT within 10 NM to MID. Depart MID at the published MCA ⑤ for the assigned route or in accordance with ATC instructions.
PROGRESO ONE CHARLIE	Climb on MID R-354 to D10 MID, intercept MPG bearing 348° to MPG. Continue on the assigned route or in accordance with ATC instructions.
SISAL ONE CHARLIE	Climb on MID R-354 to D10 MID, continue on MID R-355 to SISAL in accordance with ATC instructions.
TAGNU ONE BRAVO	Climb on MID R-354 to D7 MID, turn LEFT and proceed on MID 10 DME Arc to intercept MID R-329 to TAGNU. Continue on the assigned route or in accordance with ATC instructions.

NOT TO BE USED FOR ACTUAL NAVIGATION