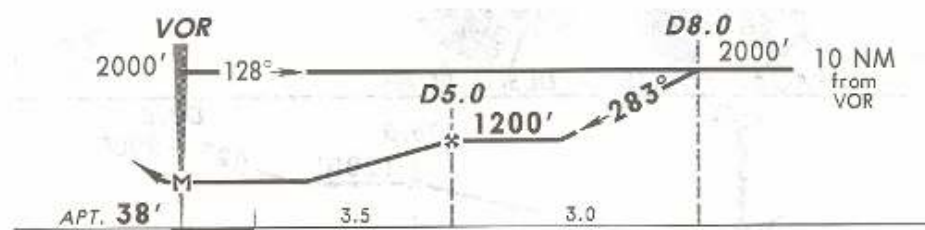
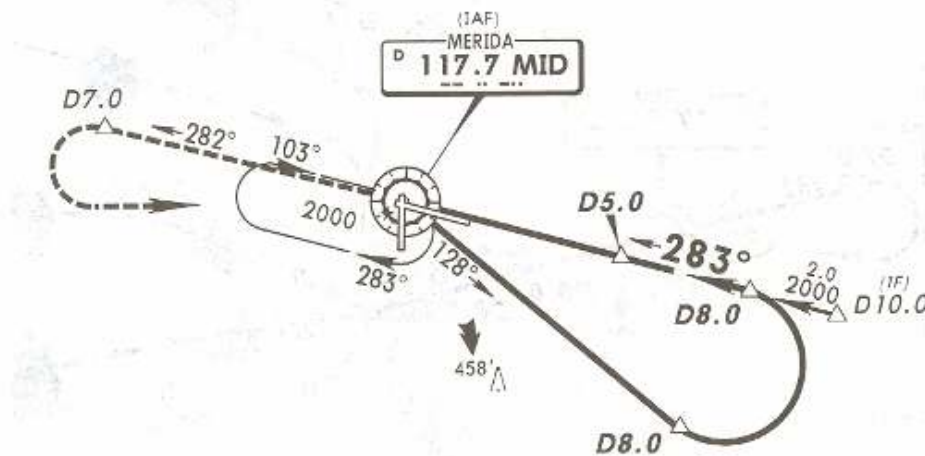


27 JUN 08
Eff 3 Jul

ATIS	MERIDA Approach (R)	MERIDA Tower
127.9	121.2	118.3

VOR MID 117.7	Final Apch Crs 283°	Minimum Alt D5.0 1200' (1162')	MDA(H) 680' (642')	Apt Elev 38'
---------------------	---------------------------	--------------------------------------	-----------------------	--------------



MISSED APCH: Climb outbound on MID VOR R-282 to D7.0, then make a teardrop turn to the LEFT within 10 NM to MID VOR at the minimum holding altitude.

Alt Set: MB (IN on req) Apt Elev: 1 MB Trans level: FL 195 Trans alt: 18500'

NOT TO BE USED FOR ACTUAL NAVIGATION