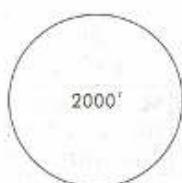
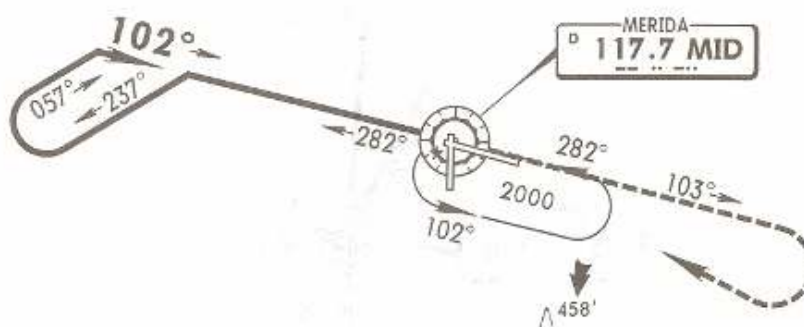


ATIS	MERIDA Approach (R)	MERIDA Tower
127.9	121.2	118.3

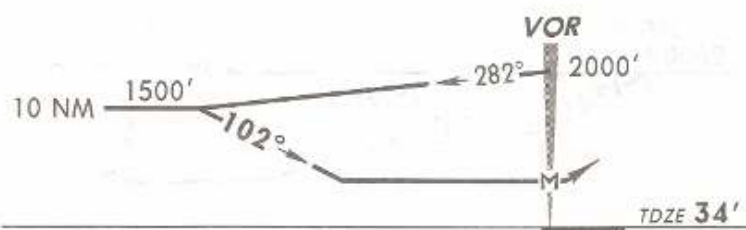
27 JUN 08

Eff 3 Jul

VOR MID 117.7	Final Apch Crs 102°	No FAF	MDA(H) 660' (626')	Apt Elev 38' TDZE 34'
----------------------------	----------------------------------	--------	------------------------------	--



MSA MID VOR



MISSED APCH: Climb outbound on MID VOR R-103, make a teardrop turn to the RIGHT within 10 NM to MID VOR at the minimum holding altitude.

MAX TIME TO TURN							
Gnd speed-Kts	80	100	120	140	160	180	200
7 NM to turn	5:15	4:12	3:30	3:00	2:38	2:20	2:06

Alt Set: MB (IN on req) TDZ Elev: 1 MB Trans level: FL 195 Trans alt: 18500'

NOT TO BE USED FOR ACTUAL NAVIGATION