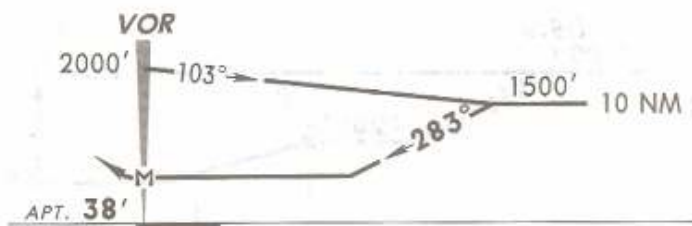
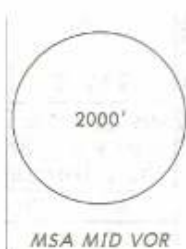
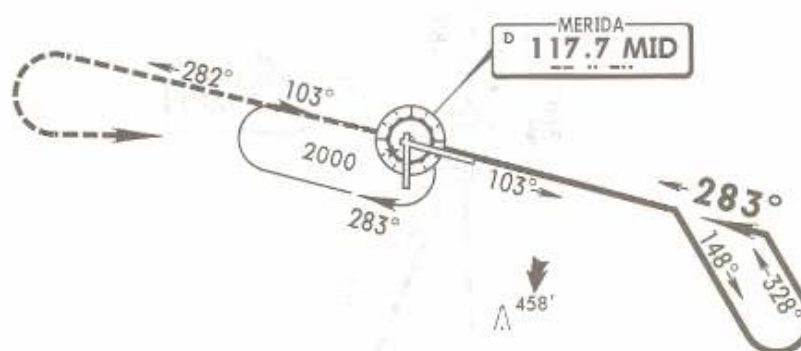


ATIS	MERIDA Approach (R)	MERIDA Tower
127.9	121.2	118.3

27 JUN 08  
Eff 3 Jul

VOR MID 117.7	Final Apch Crs 283°	No FAF	MDA(H) 740' (702')	Apt Elev 38'
---------------------	---------------------------	--------	-----------------------	--------------



**MISSED APCH:** Climb outbound on MID VOR R-282, make a teardrop turn to the LEFT within 10 NM to MID VOR at the minimum holding altitude.

Gnd speed-Kts	MAX TIME TO TURN						
	80	100	120	140	160	180	200
7 NM to turn	5:15	4:12	3:30	3:00	2:38	2:20	2:06

Alt Set: MB (IN on req) Apt Elev: 1 MB Trans level: FL 195 Trans alt: 18500'