

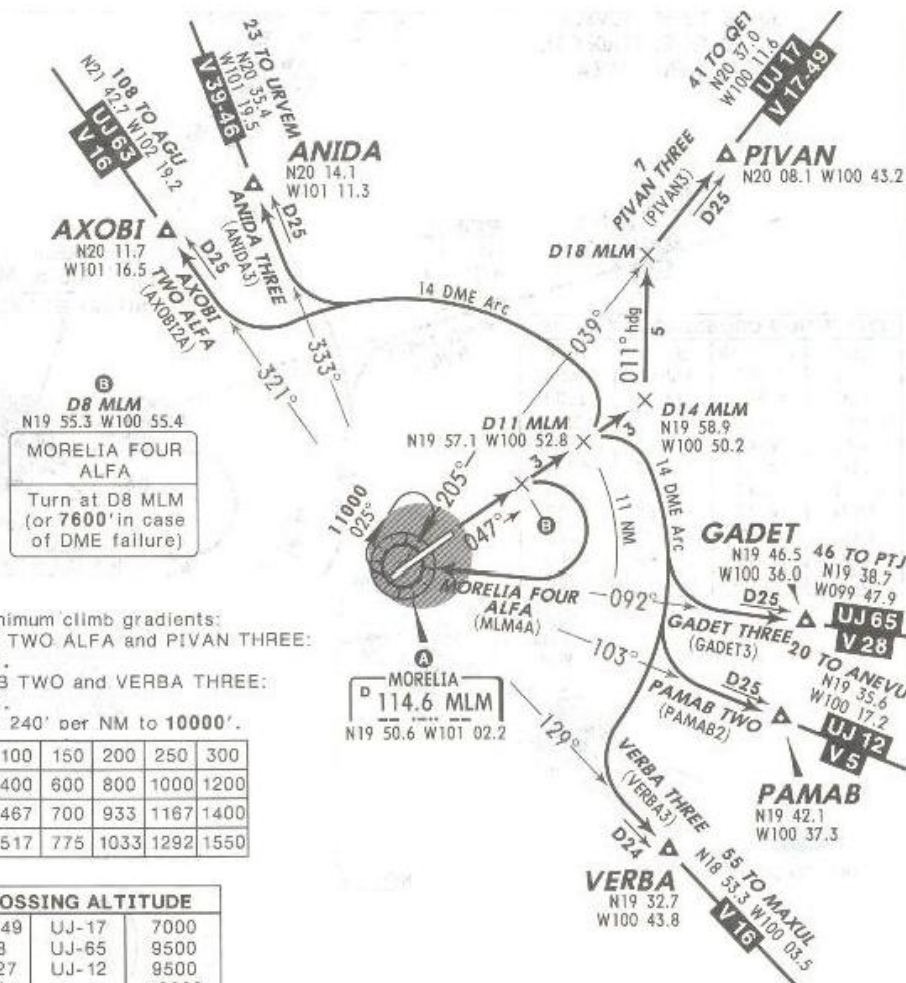
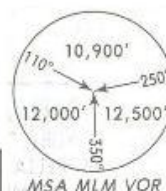
Apt Elev  
6033'

Trans level: FL 195 Trans alt: 18500'

2 APR 10  
Eff 8 Apr

### DEPARTURES RWY 05

ANIDA THREE (ANIDA3), AXOBI TWO ALFA (AXOBI2A),  
GADET THREE (GADET3), MORELIA FOUR ALFA (MLM4A),  
PAMAB TWO (PAMAB2), PIVAN THREE (PIVAN3), VERBA THREE (VERBA3)



These SIDs require minimum climb gradients:  
ANIDA THREE, AXOBI TWO ALFA and PIVAN THREE:  
310' per NM to 10000'.  
GADET THREE, PAMAB TWO and VERBA THREE:  
280' per NM to 14000'.  
MORELIA FOUR ALFA: 240' per NM to 10000'.

| Gnd speed-KT | 75  | 100 | 150 | 200  | 250  | 300  |
|--------------|-----|-----|-----|------|------|------|
| 240' per NM  | 300 | 400 | 600 | 800  | 1000 | 1200 |
| 280' per NM  | 350 | 467 | 700 | 933  | 1167 | 1400 |
| 310' per NM  | 388 | 517 | 775 | 1033 | 1292 | 1550 |

| MINIMUM CROSSING ALTITUDE |         |       |       |
|---------------------------|---------|-------|-------|
| QET                       | V-17-49 | UJ-17 | 7000  |
| PTJ                       | V-28    | UJ-65 | 9500  |
| TLC                       | V-5-27  | UJ-12 | 9500  |
| MAXUL                     | V-16    |       | 10000 |
| NAMTA                     | V-46    |       | 10500 |
| ZIH                       | V-39    | UJ-17 | 6700  |
| AXAKO                     | V-49    |       | 7500  |
| UPN                       | V-17    | UJ-65 | 8500  |
| GDL                       | V-5     | UJ-12 | 7700  |
| AGU                       | V-16    | UJ-63 | 8000  |
| BJX                       | V-39-46 |       | 6700  |



| SID                                     | INITIAL CLIMB   |
|---|---|
| ANIDA THREE<br>AXOBI TWO<br>ALFA        | Climb via MLM R-047 to D11 MLM, then turn LEFT and proceed on the MLM 14 DME Arc to intercept the corresponding radial from MLM to ANIDA or AXOBI. Continue on assigned route or according to ATC instructions.         |
| GADET THREE<br>PAMAB TWO<br>VERBA THREE | Climb via MLM R-047 to D11 MLM, then turn RIGHT and proceed on the MLM 14 DME Arc to intercept the corresponding radial from MLM to GADET, PAMAB or VERBA. Continue on assigned route or according to ATC instructions. |
| MORELIA<br>FOUR ALFA                    | Climb via MLM R-047 to D8 MLM (or 7600' in case of DME failure), then turn RIGHT within 11 NM to MLM. Depart MLM at the MCA A for the assigned route or according to ATC instructions.                                  |
| PIVAN THREE                             | Climb via MLM R-047 to D14 MLM, then turn LEFT heading 011° to intercept MLM R-039 to PIVAN. Continue on assigned route or according to ATC instructions.   |

NOT TO BE USED FOR ACTUAL NAVIGATION