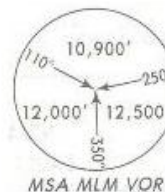


Apt Elev
6033'

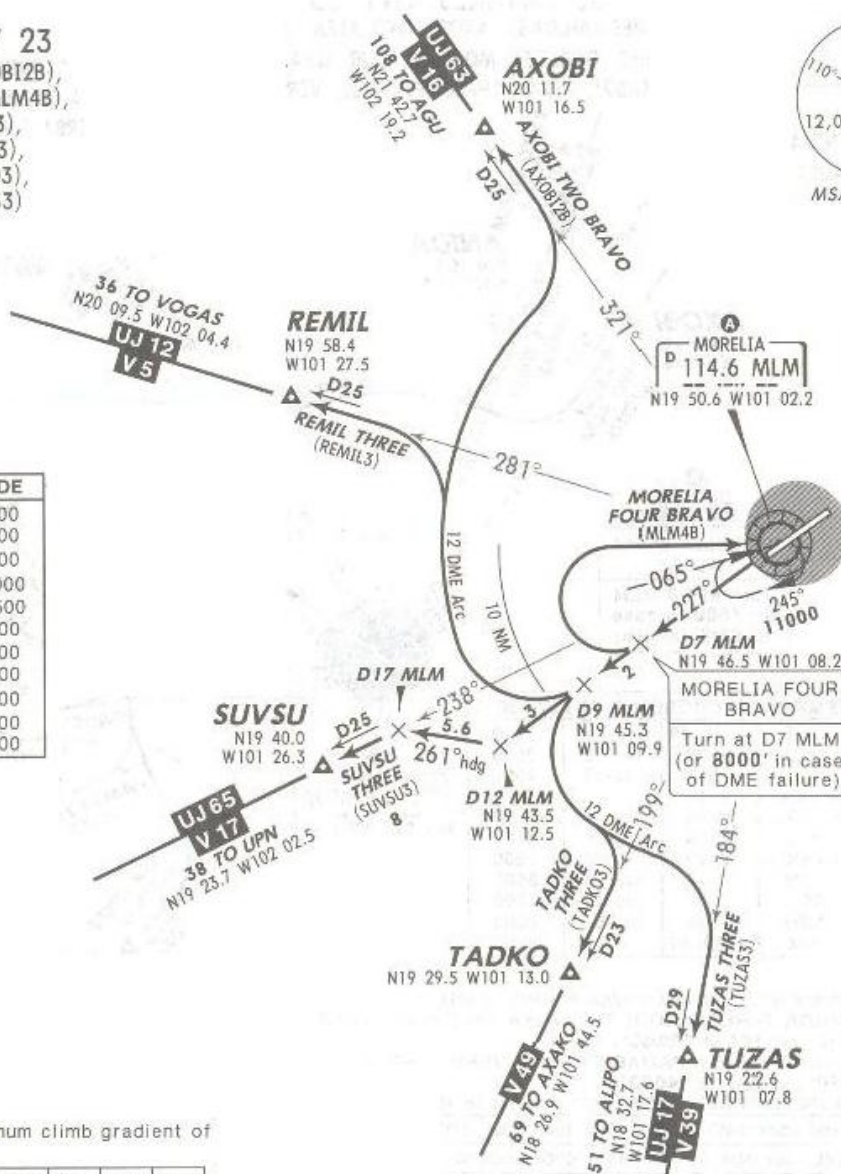
Trans level: FL 195 Trans alt: 18500'

2 APR 10
Eff 8 Apr

DEPARTURES RWY 23
AXOBI TWO BRAVO (AXOBI2B),
MORELIA FOUR BRAVO (MLM4B),
REMIL THREE (REMIL3),
SUVSU THREE (SUVSU3),
TADKO THREE (TADKO3),
TUZAS THREE (TUZAS3)



A MINIMUM CROSSING ALTITUDE			
QET	V-17-49	UJ-17	7000
PTJ	V-28	UJ-65	9500
TLC	V-5-27	UJ-12	9500
MAXUL	V-16		10000
NAMTA	V-46		10500
ZIH	V-39	UJ-17	6700
AXAKO	V-49		7500
UPN	V-17	UJ-65	8500
GDL	V-5	UJ-12	7700
AGU	V-16	UJ-63	8000
BJX	V-39-46		6700



These SIDs require a minimum climb gradient of 280' per NM to 11000'.

Gnd speed-KT	75	100	150	200	250	300
280' per NM	350	467	700	933	1167	1400

SID	INITIAL CLIMB
AXOBI TWO BRAVO REMIL THREE	Climb via MLM R-227 to D9 MLM, then turn RIGHT and proceed on the MLM 12 DME Arc to intercept the corresponding radial from MLM to AXOBI or REMIL. Continue on assigned route or according to ATC instructions.
MORELIA FOUR BRAVO	Climb via MLM R-227 to D7 MLM (or 8000' in case of DME failure), then turn RIGHT within 10 NM to MLM. Depart MLM at the MCA A for the assigned route or according to ATC instructions.
SUVSU THREE	Climb via MLM R-227 to D12 MLM, then turn RIGHT heading 261° to intercept MLM R-238 to SUVSU. Continue on assigned route or according to ATC instructions.
TADKO THREE TUZAS THREE	Climb via MLM R-227 to D9 MLM, then turn LEFT and proceed on the MLM 12 DME Arc to intercept the corresponding radial from MLM to TADKO or TUZAS. Continue on assigned route or according to ATC instructions.

NOT TO BE USED FOR ACTUAL NAVIGATION