

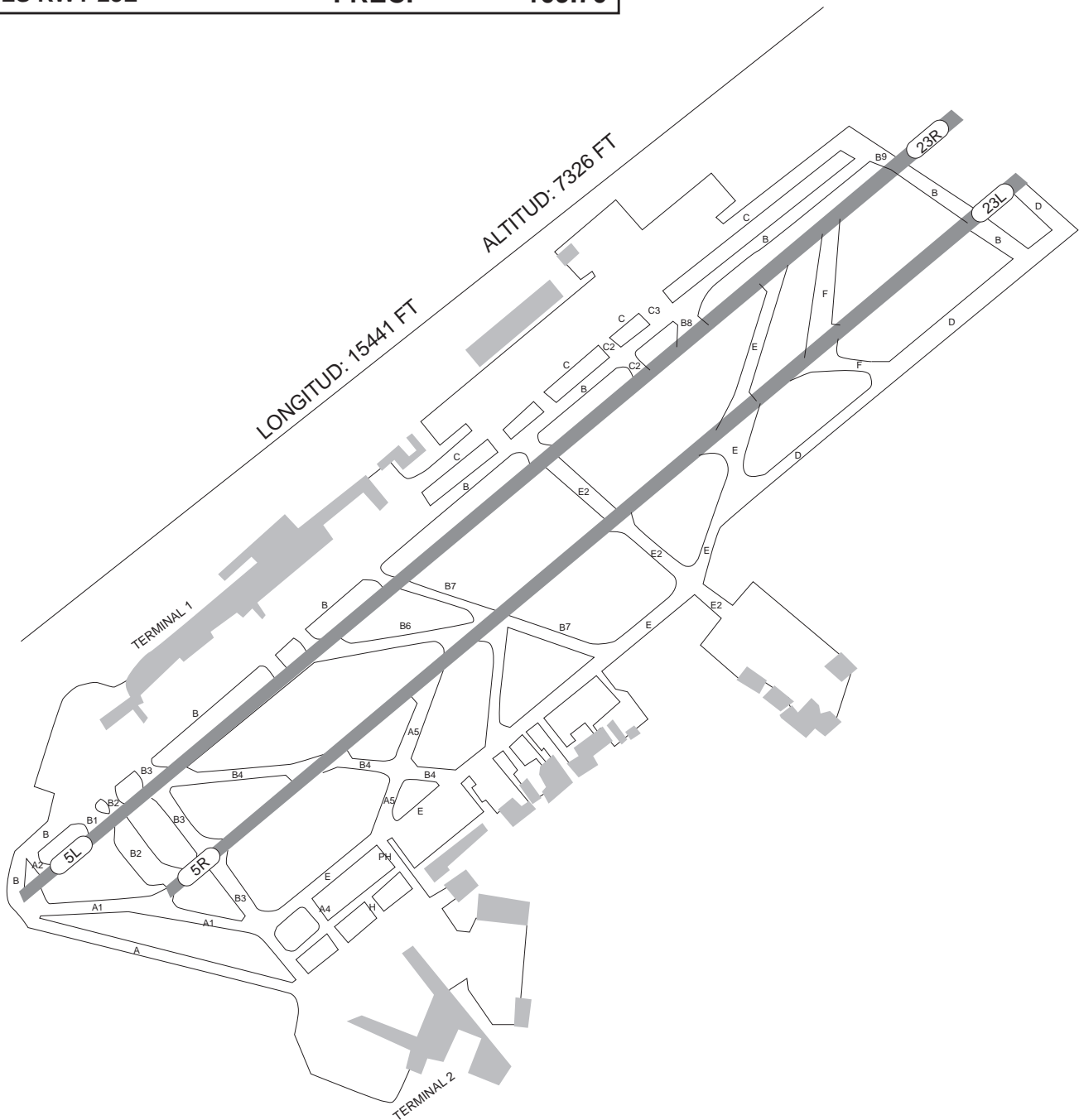


LIC. BENITO JUAREZ, MEXICO DF,
INTERNATIONAL AIRPORT

MMMXX

MEXICO CENTER	MMEX_CTR	126.60
MEXICO APROXIMACION	MMMXX_APP	121.20
MEXICO TORRE	MMMXX_TWR	118.10
VOR MEX	MEX	115.60
ILS RWY 5R	FREC.	109.10
ILS RWY 23L	FREC.	109.70

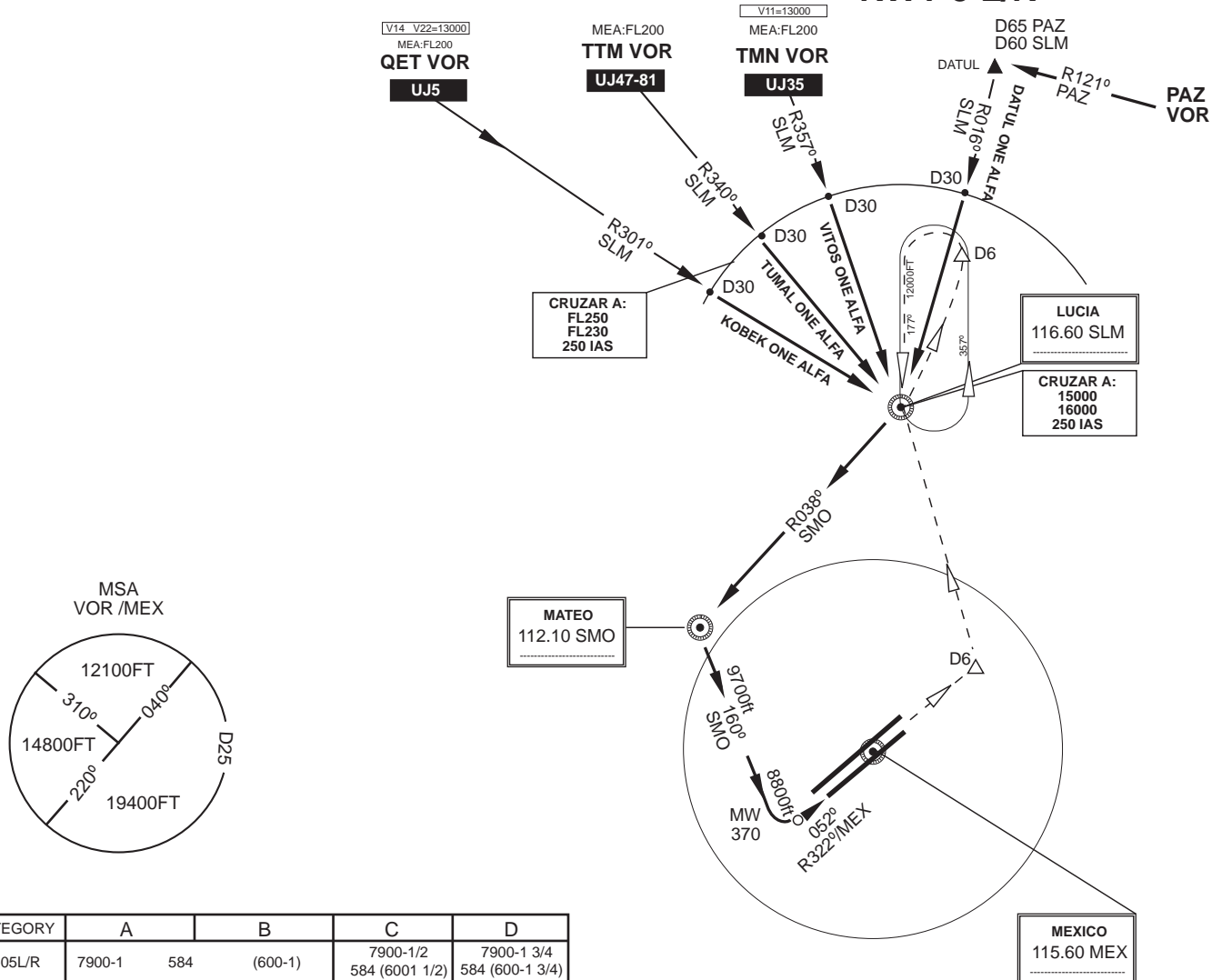
INF. AIRPORT



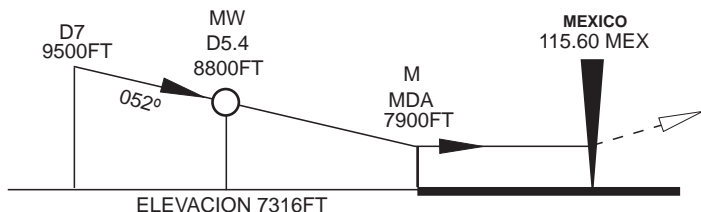
NOT TO BE USED FOR ACTUAL NAVIGATION

MEXICO CENTER	MMEX_CTR	126.60
MEXICO APPROACH	MMMXX_APP	121.20
MEXICO TOWER	MMMXX_TWR	118.10
VOR MEX	MEX	115.60
ILS RWY 5R	FREC.	109.10
ILS RWY 23L	FREC.	109.70

TRANSITIONS KOBK ONE ALFA, TUMAL ONE ALFA VITOS ONE ALFA SYSTEM APPROACH VOR / DME 1 RWY 5 L/R



CATEGORY	A	B	C	D
S-05L/R	7900-1 584 (600-1)	7900-1 584 (600-1)	7900-1 584 (600-1)	7900-1 584 (600-1)
CIRCLING	7900-1 644 (700-1)	7900-1 644 (700-1)	7900-1 644 (700-1)	7900-1 644 (700-1)



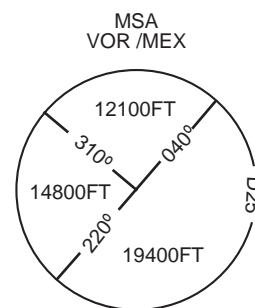
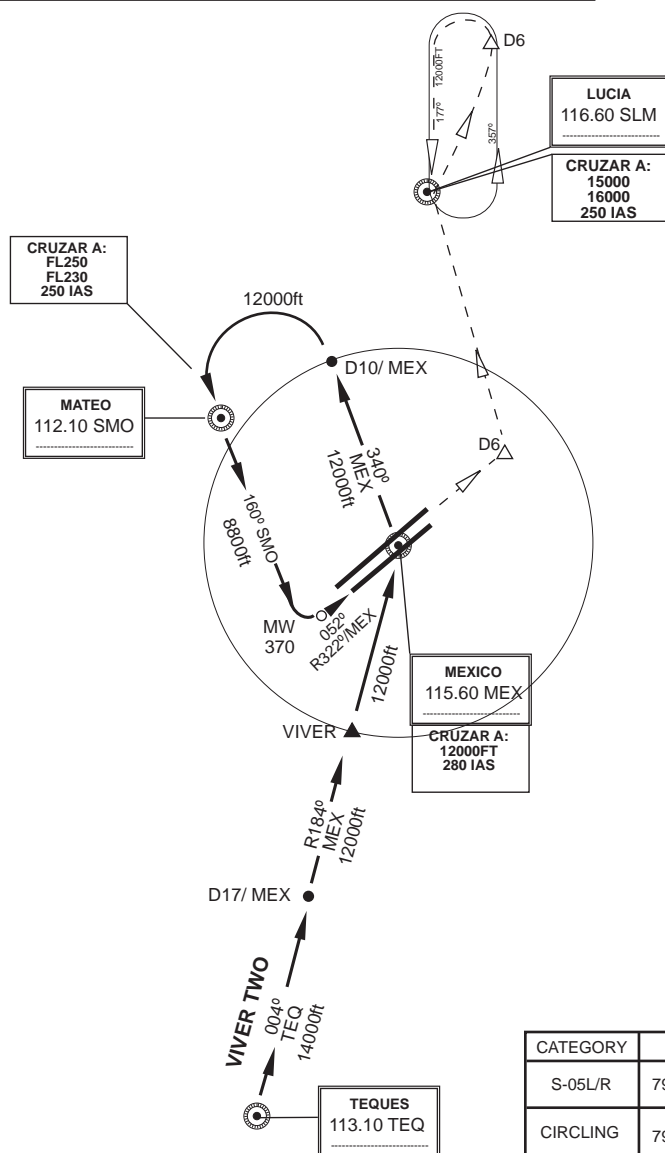
MISSED APPROACH

CLIMB TO 11000FT OUTBOUND ON THE R-052
UNTIL 6DME VOR MEX, LEFT TURN DIRECT
SLM VOR, VERTICAL SLM START
WAITING PROCEDURE
WAIT FOR ATC INSTRUCTIONS

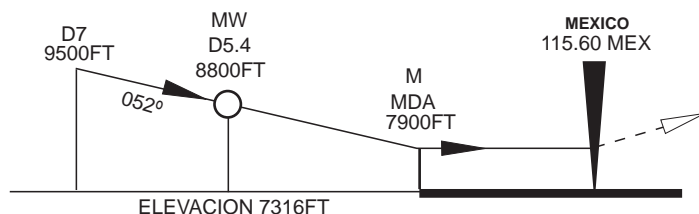
NOT TO BE USED FOR ACTUAL NAVIGATION

MEXICO CENTER	MMEX_CTR	126.60
MEXICO APPROACH	MMMX_APP	121.20
MEXICO TOWER	MMMX_TWR	118.10
VOR MEX	MEX	115.60
ILS RWY 5R	FREC.	109.10
ILS RWY 23L	FREC.	109.70

TRANSITIONS
VIVER TWO
SYSTEM APPROACH
VOR / DME 1
RWY 5 L/R



CATEGORY	A		B	C	D
S-05L/R	7900-1	584	(600-1)	7900-1/2 584 (6001 1/2)	7900-1 3/4 584 (600-1 3/4)
CIRCLING	7900-1	644	(700-1)	7960-1 3/4 644 (700-1 3/4)	7960-2 644 (700-2)



MISSED APPROACH

CLIMB TO 11000FT OUTBOUND ON THE R-052
UNTIL 6DME VOR MEX, LEFT TURN DIRECT
SLM VOR, VERTICAL SLM START
WAITING PROCEDURE
WAIT FOR ATC INSTRUCTIONS

NOT TO BE USED FOR ACTUAL NAVIGATION

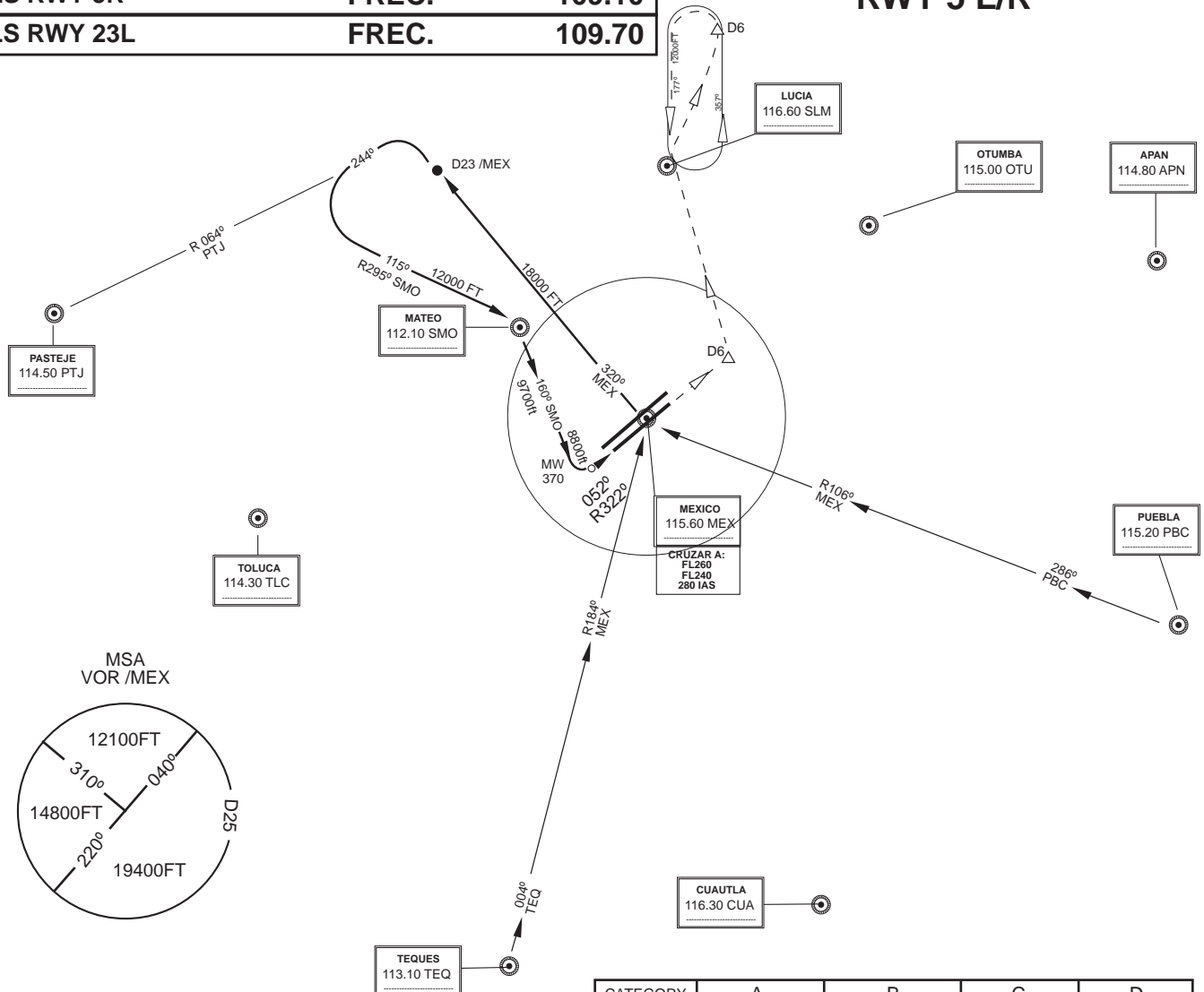


LIC. BENITO JUAREZ, MEXICO DF,
INTERNATIONAL AIRPORT

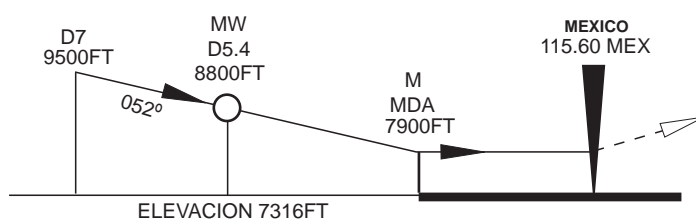
MMMXX

MEXICO CENTER	MMEX_CTR	126.60
MEXICO APPROACH	MMMXX_APP	121.20
MEXICO TOWER	MMMXX_TWR	118.10
VOR MEX	MEX	115.60
ILS RWY 5R	FREC.	109.10
ILS RWY 23L	FREC.	109.70

TRANCITIONS
MEXICO 1A
SYSTEM APPROACH
VOR / DME 1
RWY 5 L/R



CATEGORY	A	B	C	D
S-05L/R	7900-1	584 (600-1)	7900-1/2 584 (600-1 1/2)	7900-1 3/4 584 (600-1 3/4)
CIRCLING	7900-1	644 (700-1)	7960-1 3/4 644 (700-1 3/4)	7960-2 644 (700-2)



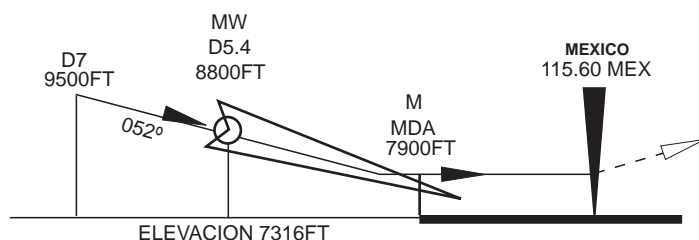
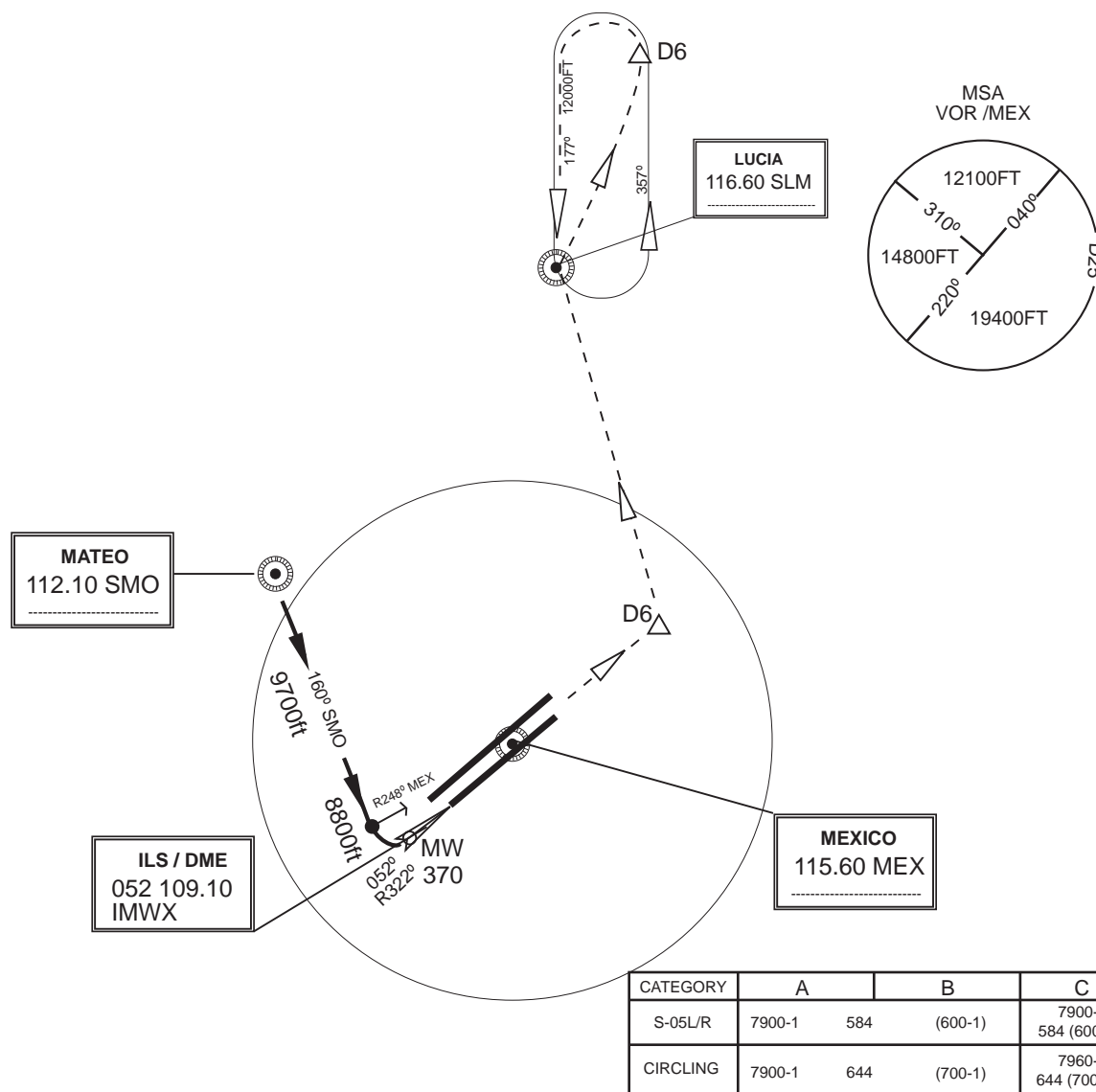
FAILED APPROACH

CLIMB TO 11000FT OUTBOUND ON THE R-052
UNTIL 6DME VOR MEX, LEFT TURN DIRECT
SLM VOR, VERTICAL SLM START
WAITING PROCEDURE
WAIT FOR ATC INSTRUCTIONS

NOT TO BE USED FOR ACTUAL NAVIGATION

MEXICO CENTER	MMEX_CTR	126.60
MEXICO APPROACH	MMMX_APP	121.20
MEXICO TOWER	MMMX_TWR	118.10
VOR MEX	MEX	115.60
ILS RWY 5R	FREC.	109.10
ILS RWY 23L	FREC.	109.70

**SYSTEM APPROACH
ILS / DME 1
RWY 05R**



MISSED APPROACH

CLIMB TO 11000FT OUTBOUND ON THE R-052
UNTIL 6DME VOR MEX, LEFT TURN DIRECT
SLM VOR, VERTICAL SLM START
WAITING PROCEDURE
WAIT FOR ATC INSTRUCTIONS

NOT TO BE USED FOR ACTUAL NAVIGATION

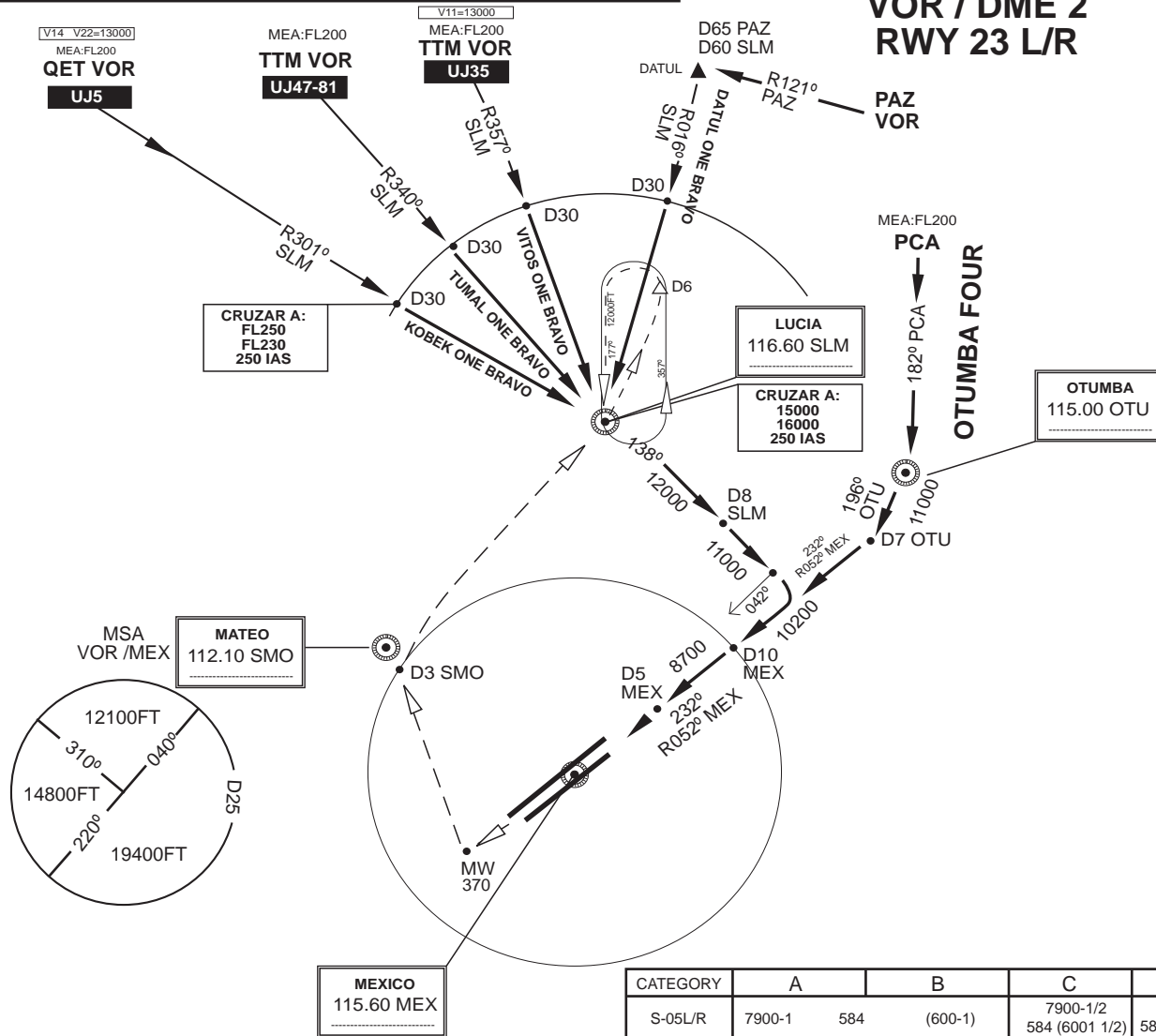


LIC. BENITO JUAREZ, MEXICO DF,
INTERNATIONAL AIRPORT

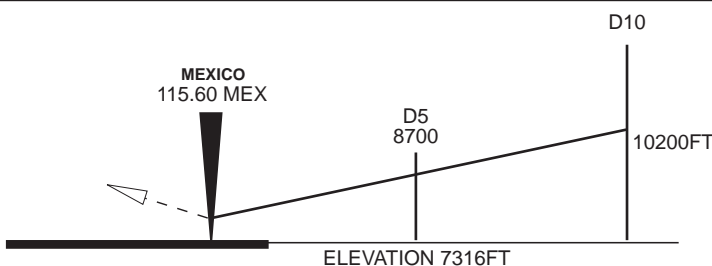
MMMX

MEXICO CENTER	MMEX_CTR	126.60
MEXICO APPROACH	MMMX_APP	121.20
MEXICO TOWER	MMMX_TWR	118.10
VOR MEX	MEX	115.60
ILS RWY 5R	FREC.	109.10
ILS RWY 23L	FREC.	109.70

TRANSITIONS
KOBK ONE BRAVO,
TUMAL ONE BRAVO
VITOS ONE BRAVO
OTUMBA FOUR
SYSTEM APPROACH
VOR / DME 2
RWY 23 L/R



CATEGORY	A	B	C	D
S-05L/R	7900-1 584	(600-1)	7900-1/2 584 (6001 1/2)	7900-1 3/4 584 (600-1 3/4)
CIRCLING	7900-1 644	(700-1)	7960-1 3/4 644 (700-1 3/4)	7960-2 644 (700-2)



MISSED APPROACH

CLIMB TO 12000FT OUTBOUND ON THE R-232
UNTIL 5.42 DME VOR MEX / NDB MW /,
RIGHT TURN 160HDG TO VOR DME SMO
ON D3 VOR DME SMO, RIGHT TURN,
INTERCEPT R210 SMO DIRECT SLM VOR,
WAITING PROCEDURE
WAIT FOR ATC INSTRUCTIONS

NOT TO BE USED FOR ACTUAL NAVIGATION

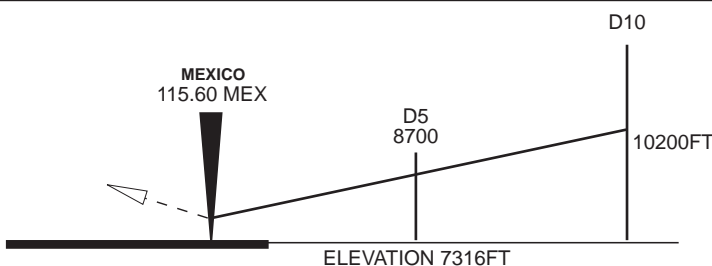
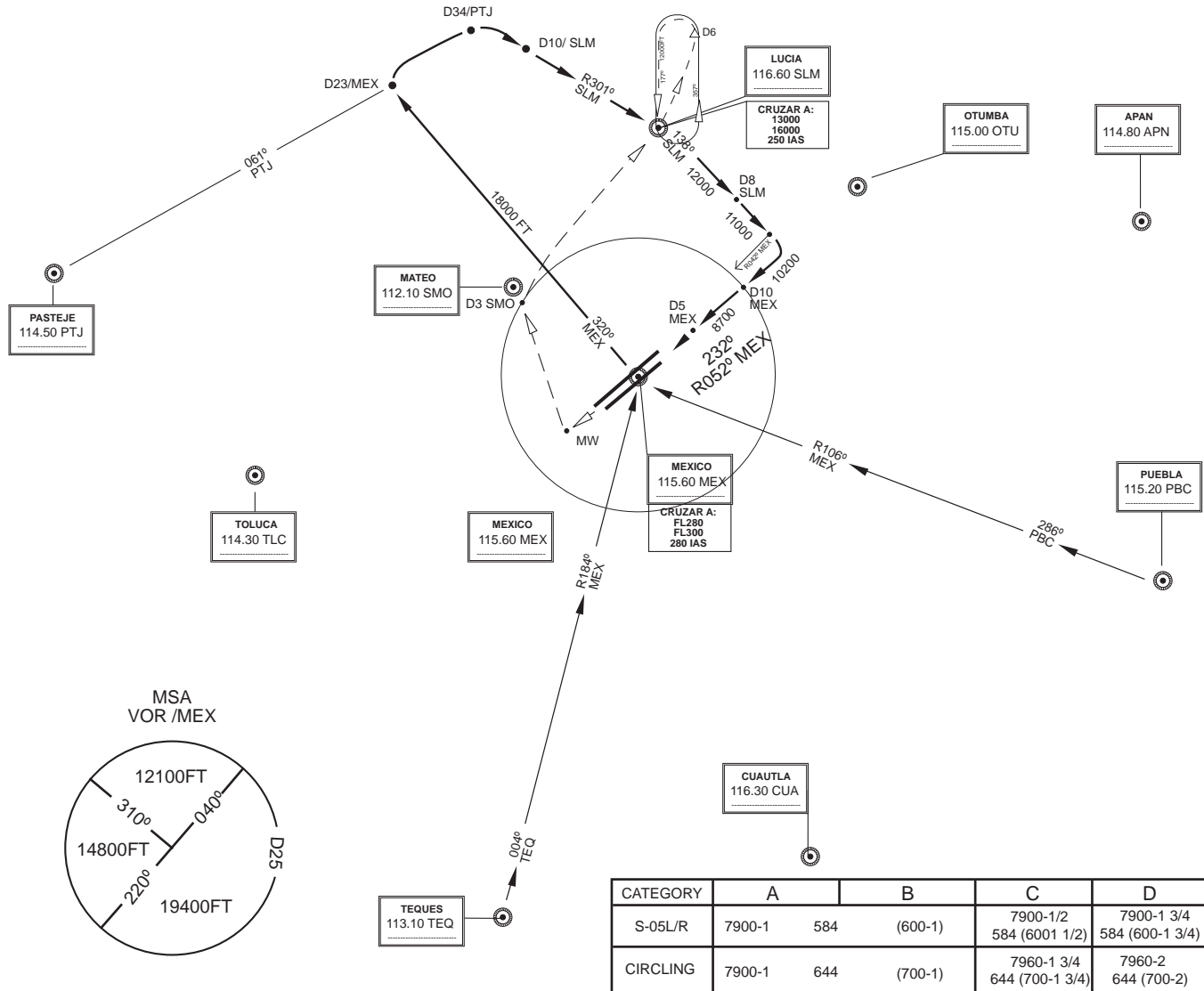


LIC. BENITO JUAREZ, MEXICO DF,
INTERNATIONAL AIRPORT

MMMX

MEXICO CENTER	MMEX_CTR	126.60
MEXICO APPROACH	MMM_X_APP	121.20
MEXICO TOWER	MMM_X_TWR	118.10
VOR MEX	MEX	115.60
ILS RWY 5R	FREC.	109.10
ILS RWY 23L	FREC.	109.70

TRANSITIONS
MEXICO ONE B
SYSTEM APPROACH
VOR / DME 2
RWY 23 L/R



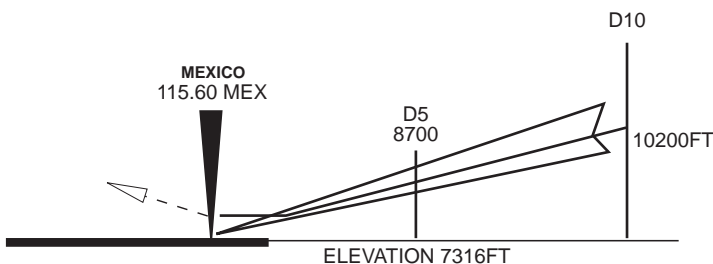
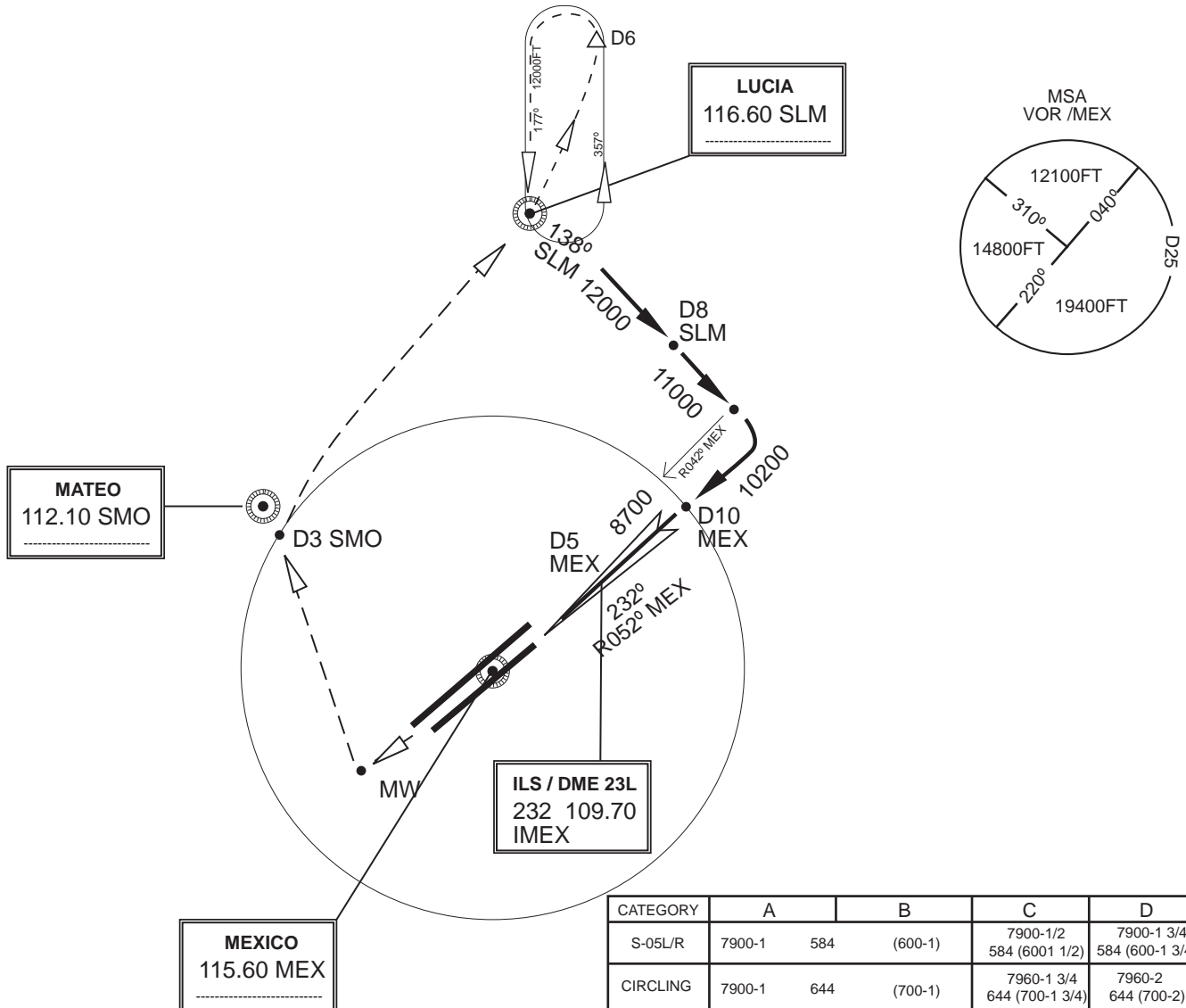
FAILED APPROACH

CLIMB TO 12000FT OUTBOUND ON THE R-232
UNTIL 5.42 DME VOR MEX / NDB MW / ,
RIGHT TURN 160HDG TO VOR DME SMO
ON D3 VOR DME SMO, RIGHT TURN,
INTERCEPT R210 SMO DIRECT SLM VOR,
WAITING PROCEDURE
WAIT FOR ATC INSTRUCTIONS

NOT TO BE USED FOR ACTUAL NAVIGATION

MEXICO CENTER	MMEX_CTR	126.60
MEXICO APPROACH	MMM_X_APP	121.20
MEXICO TOWER	MMM_X_TWR	118.10
VOR MEX	MEX	115.60
ILS RWY 5R	FREC.	109.10
ILS RWY 23L	FREC.	109.70

SYSTEM APPROACH ILS DME 2 RWY 23 L



MISSED APPROACH

CLIMB TO 12000FT OUTBOUND ON THE R-232
UNTIL 5.42 DME VOR MEX / NDB MW / ,
RIGHT TURN 160HDG TO VOR DME SMO
ON D3 VOR DME SMO, RIGHT TURN,
INTERCEPT R210 SMO DIRECT SLM VOR,
VERTICAL SLM START
WAITING PROCEDURE
WAIT FOR ATC INSTRUCTIONS

NOT TO BE USED FOR ACTUAL NAVIGATION

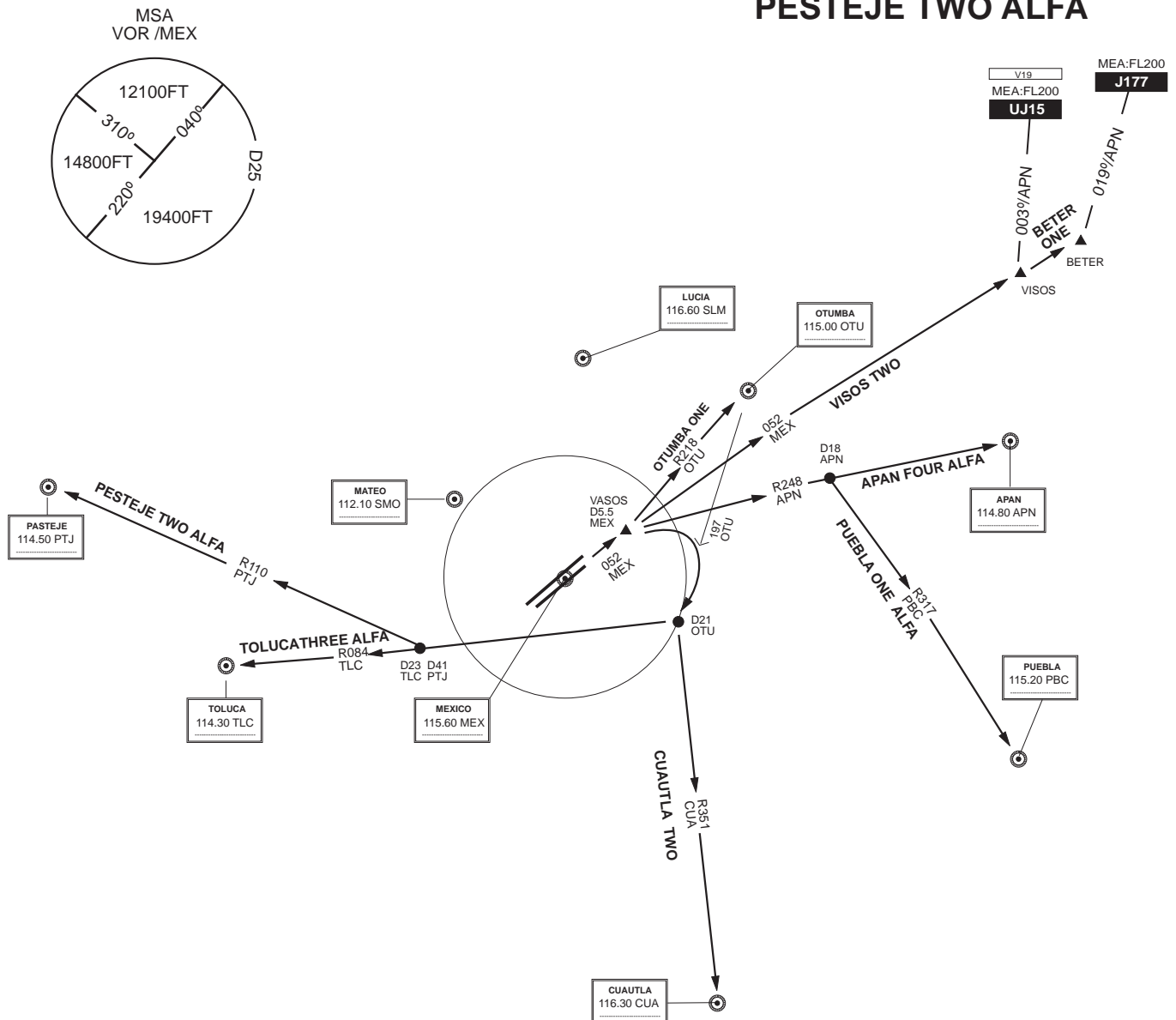


LIC. BENITO JUAREZ, MEXICO DF,
INTERNATIONAL AIRPORT

MMMXX

MEXICO CENTER	MMEX_CTR	126.60
MEXICO APPROACH	MMMXX_APP	121.20
MEXICO TOWER	MMMXX_TWR	118.10
VOR MEX	MEX	115.60
ILS RWY 5R	FREC.	109.10
ILS RWY 23L	FREC.	109.70

DEPARTURES RWY 05 L/R
OTUMBA ONE
VISOS TWO
BETER ONE
APAN FOUR ALFA
PUEBLA ONE ALFA
CUATLA TWO
TOLUCA THREE ALFA
PESTEJE TWO ALFA



CATEGORY	A	B	C	D
S-05L/R	7900-1 584	(600-1)	7900-1 1/2 584 (6001 1/2)	7900-1 3/4 584 (600-1 3/4)
CIRCLING	7900-1 644	(700-1)	7960-1 3/4 644 (700-1 3/4)	7960-2 644 (700-2)

NOT TO BE USED FOR ACTUAL NAVIGATION

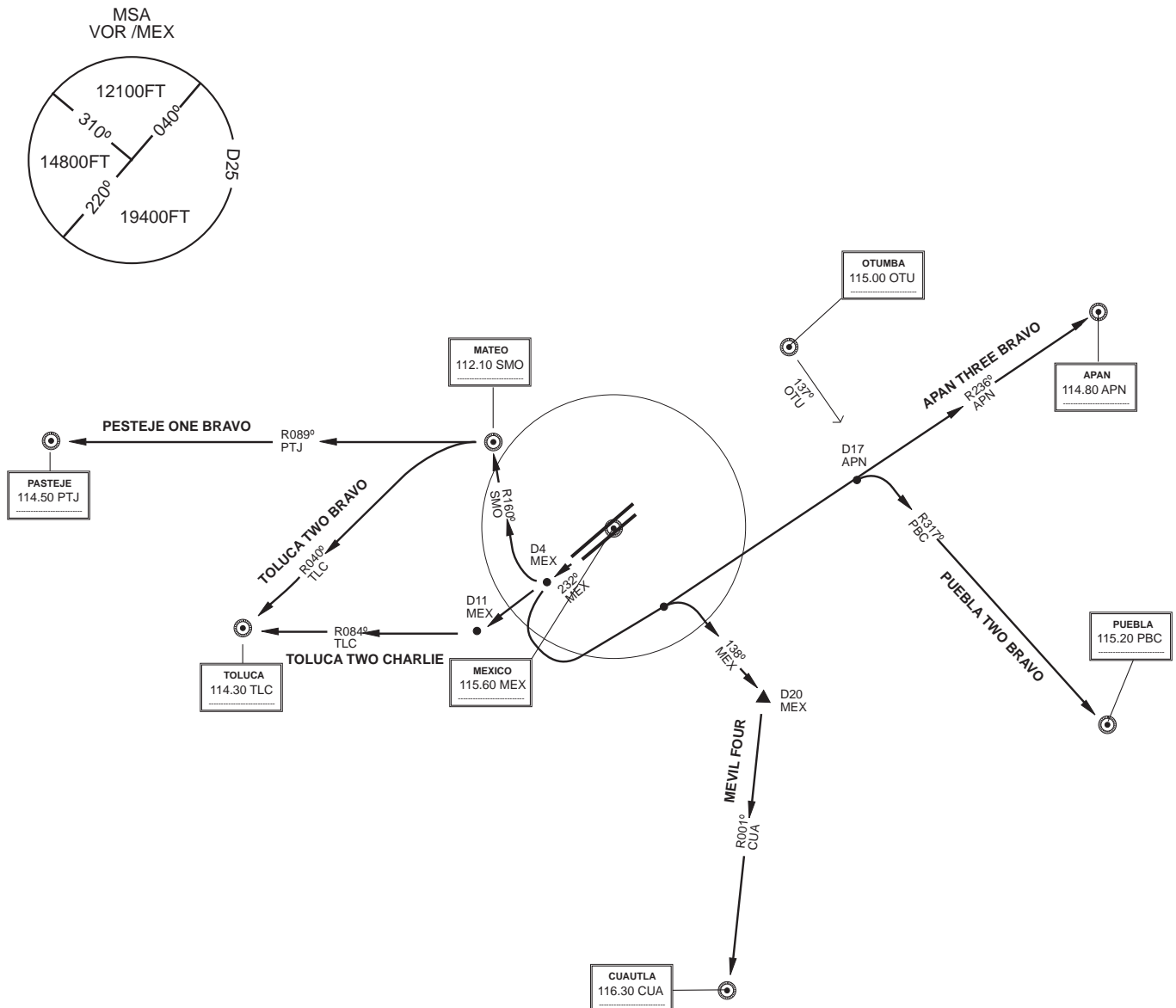


LIC. BENITO JUAREZ, MEXICO DF,
INTERNATIONAL AIRPORT

MMMXX

MEXICO CENTER	MMEX_CTR	126.60
MEXICO APPROACH	MMMXX_APP	121.20
MEXICO TOWER	MMMXX_TWR	118.10
VOR MEX	MEX	115.60
ILS RWY 5R	FREC.	109.10
ILS RWY 23L	FREC.	109.70

DEPARTURES RWY 23 L/R
APAN TWO BRAVO
PUEBLA ONE BRAVO
MEVIL FOUR
TOLUCA TWO CHARLIE
TOLUCA TWO BRAVO
PESTEJE ONE BRAVO



CATEGORY	A		B	C	D
S-05L/R	7900-1	584	(600-1)	7900-1 1/2 584 (6001 1/2)	7900-1 3/4 584 (600-1 3/4)
CIRCLING	7900-1	644	(700-1)	7960-1 3/4 644 (700-1 3/4)	7960-2 644 (700-2)

NOT TO BE USED FOR ACTUAL NAVIGATION