

MMMX/MEX

SID

RWYS 05L/R

MEXICO CITY, MEXICO



DEPARTURES RWYS 05L/R

APAN FOUR ALFA (APAN4A), OTUMBA ONE (OTU1),
PUEBLA ONE ALFA (PBC1A), VISOS TWO (VISOS2)

SPEED

MAX 200K UNTIL VASOS

MMMX_DEP East

120.5

MMMX_DEP West

129.1



MEXICO
115.6 MEX

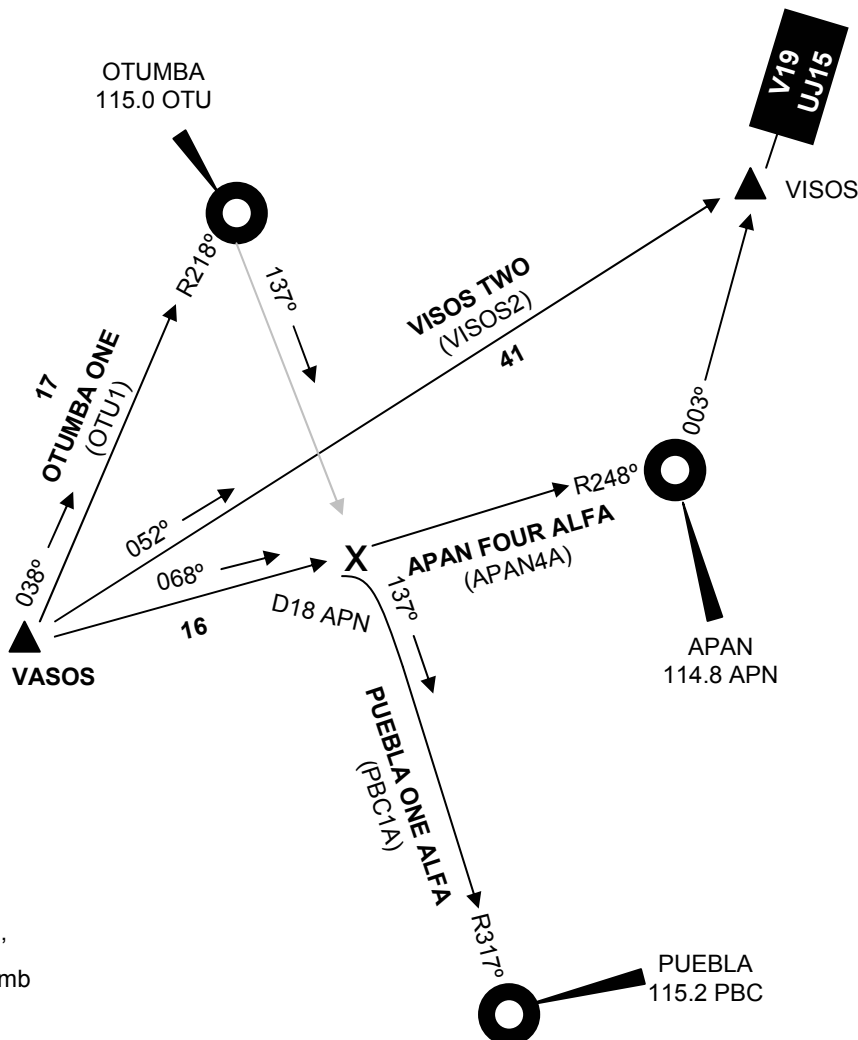
APAN4A and PBC1A require minimum
climb gradients of 320' per NM to 14000'

VISOS2 and OTU1 require minimum climb
gradients of 240' per NM to 14000'



(NARRATIVE ON FOLLOWING PAGE)

NOTE: DME and RADAR required, chart not to scale



DEPARTURE ROUTE DESCRIPTION

APAN FOUR ALFA (APN4A): climb via runway heading until VASOS, turn right to intercept APN R-248 direct to APN VOR...

OTUMNA ONE (OTU1): climb via runway heading until VASOS, turn left to intercept OTU R-218 to OTU VOR...

PUEBLA ONE ALFA (PBC1A): climb via runway heading until VASOS, turn right to intercept APN R-248 to D18 APN, turn right to intercept PBC R-317 to PBC VOR...

VISOS TWO (VISOS2): climb via runway heading until VASOS, proceed on MEX R-052 to VISOS...

ROUTING.

... climb and maintain FL270', expect clearance to filed altitud, and then continue via assigned route or in accordance with the ATC instructions

NOTE: Departure instructions can be change in accordance with ATC



MMMX/MEX

SID RWYS 05L/R

MEXICO CITY, MEXICO



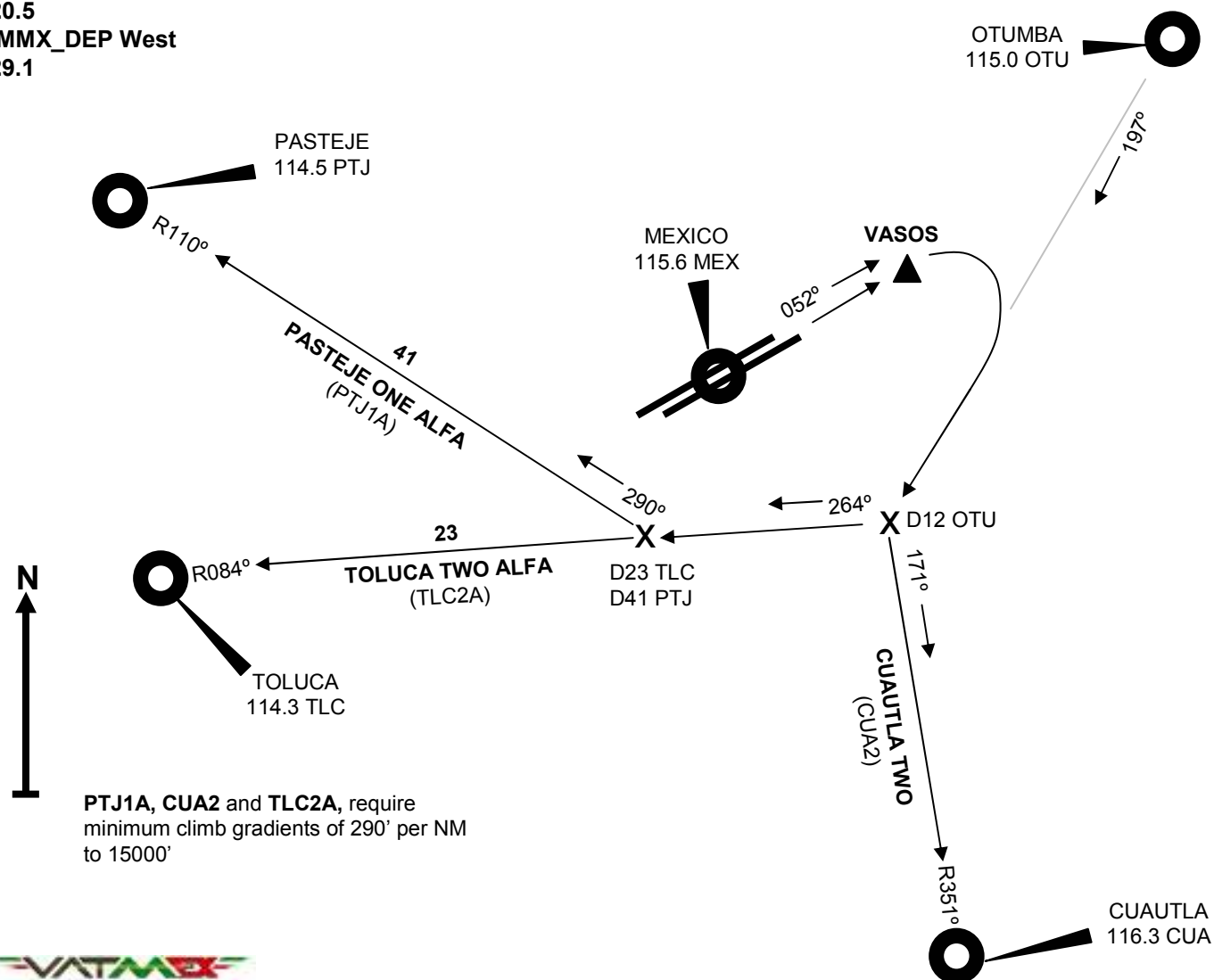
DEPARTURES RWYS 05L/R



PASTEJE ONE ALFA (PTJ1A), CUAUTLA TWO (CUA2),
TOLUCA TWO ALFA (TLC2A)

SPEED MAX 200K UNTIL VASOS

MMMX_DEP East
120.5
MMMX_DEP West
129.1



(NARRATIVE ON FOLLOWING PAGE)

NOTE: DME and RADAR required, chart not to scale

DEPARTURE ROUTE DESCRIPTION

CUAUTLA TWO (CUA2): climb via runway heading until VASOS, turn right to intercept OTU R-197 to D21 OTU, turn left to intercept CUA R-351 direct to CUA VOR...

PASTEJE ONE ALFA (PTJ1A): climb via runway heading until VASOS, turn right to intercept OTU R-197 to D21 OTU, turn right to intercept TLC R-084 to D23 TLC, turn right to intercept PTJ R-110 to PTJ VOR ...

TOLUCA TWO ALFA (TLC2A): climb via runway heading until VASOS, turn right to intercept OTU R-197 to D21 OTU, turn right to intercept TLC R-084 to TLC VOR...

ROUTING.

... climb and maintain FL270', expect clearance to filed altitud, and then continue via assigned route or in accordance with the ATC instructions

NOTE: Departure instructions can be change in accordance with ATC

