

MMMX/MEX **STAR** RWYS 05L/R

MEXICO CITY, MEXICO



### ARRIVALS RWYS 05L/R



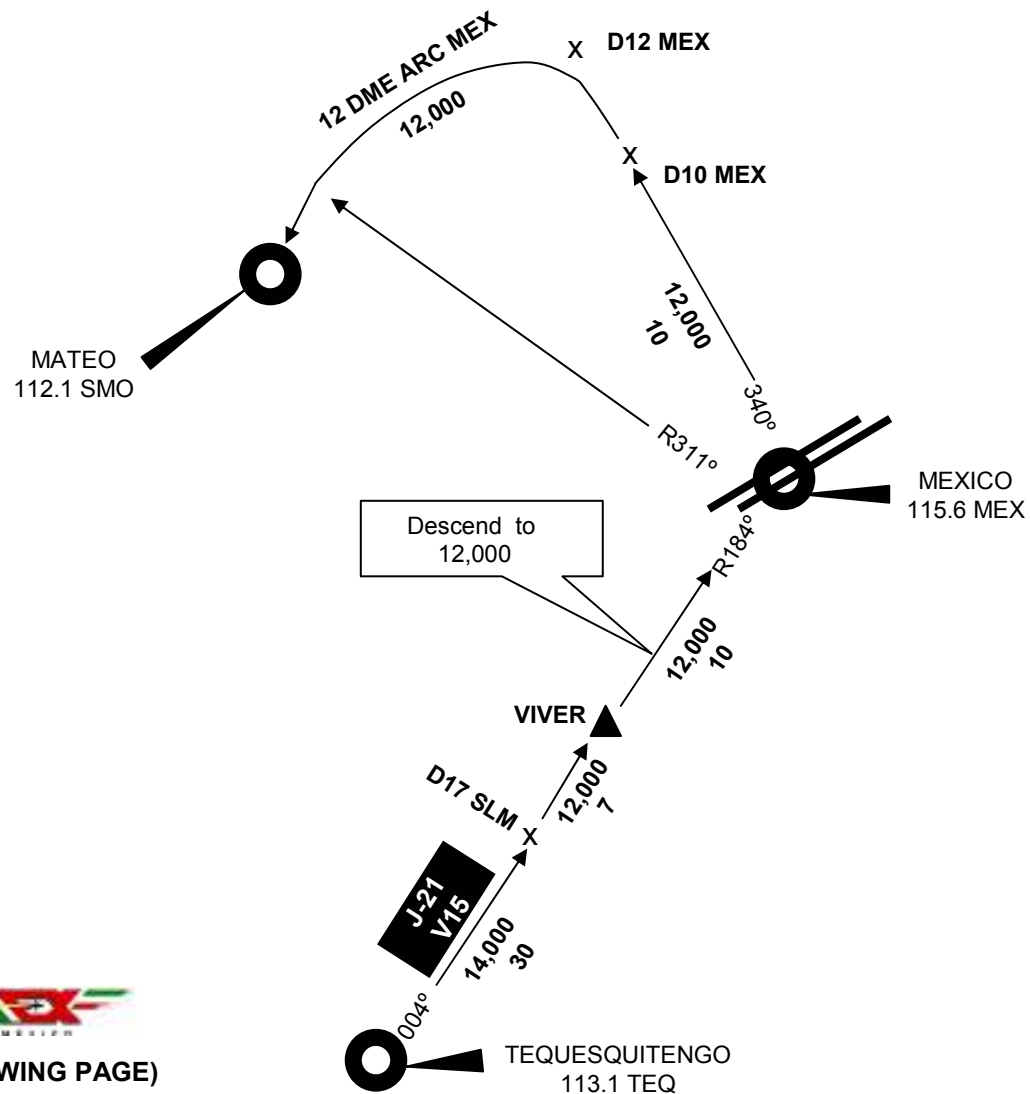
VIVER ONE CHARLIE (VIVER1C), TURBOPROP OPERATIONS ONLY

MMMX\_APP 121.2  
ATIS 127.65



(NARRATIVE ON FOLLOWING PAGE)

NOTE: DME and RADAR required, chart not to scale



ARRIVAL DESCRIPTION

VIVER ONE CHARLIE (VIVER1C)  
TURBOPROP OPERATIONS ONLY

VIVER 1C (VIVER1C): check VIVER fix at 12,000, then proceed direct to MEX VOR, then MEX R-340 to D12 MEX, continue with 12 DME ARC MEX to SMO, expect clearance to proceed with approach procedure

NOTE: Arrival instructions can be change in accordance with ATC



MMMX/MEX **STAR** RWYS 23L/R

MEXICO CITY, MEXICO

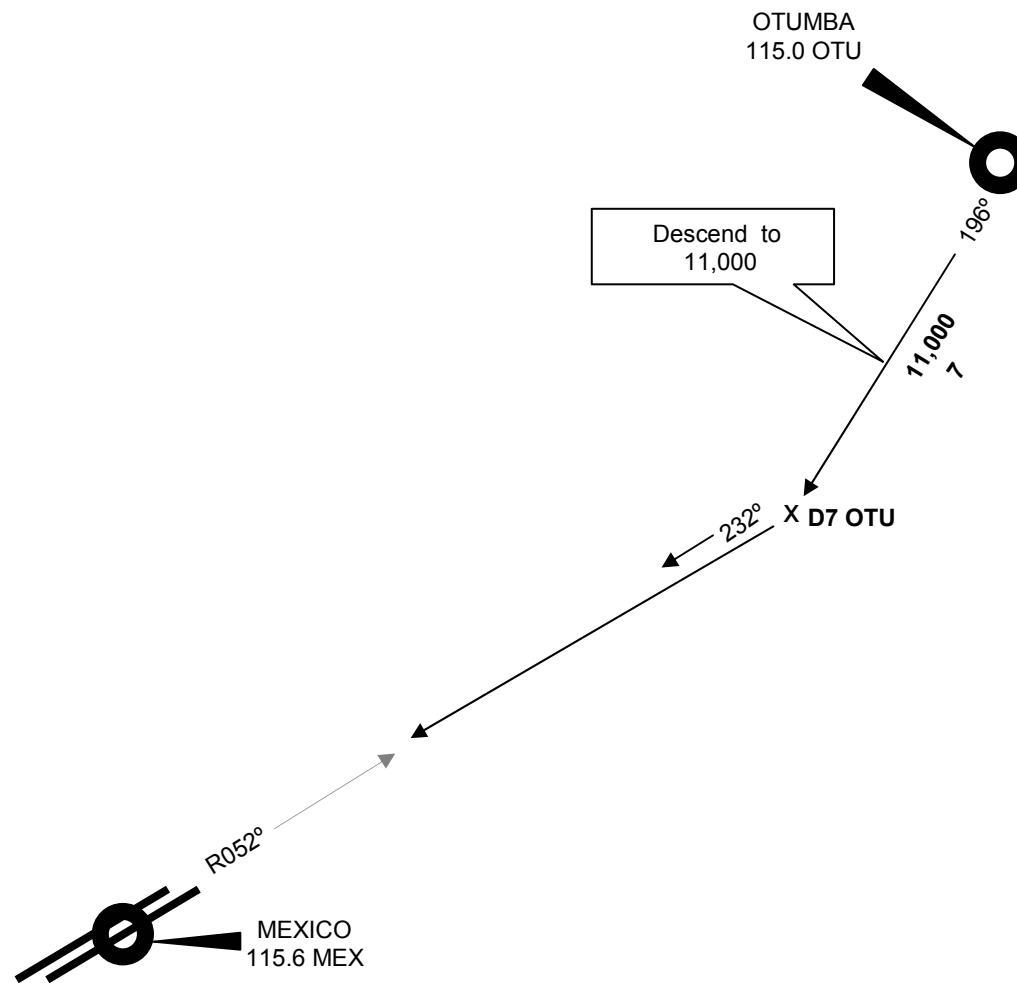


# ARRIVALS RWYS 23L/R

OTUMBA THREE (OTU3)



MMMX\_APP 121.2  
ATIS 127.65



(NARRATIVE ON FOLLOWING PAGE)

NOTE: DME and RADAR required, chart not to scale

**ARRIVAL DESCRIPTION**

OTUMBA THREE (OTU3)

OTUMBA THREE (OTU3): check OTU VOR at 12,000, then leave OTU VOR on R-196 descending to 11,000, at D7 OTU turn RIGHT to intercept MEX R-052, expect clearance to proceed with approach procedure

NOTE: Arrival instructions can be change in accordance with ATC

