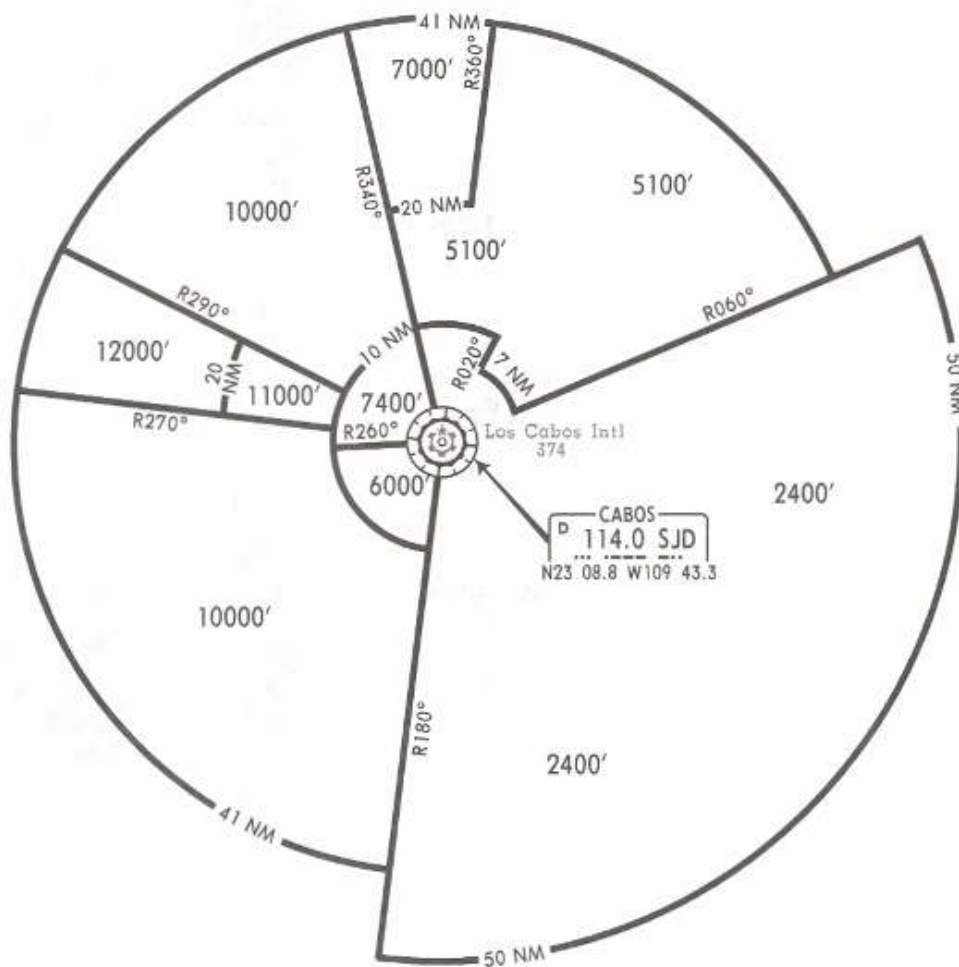


16 NOV 07

### IFR MINIMUM VECTOR ALTITUDES (MVA)

These MVAs are the lowest altitudes that can be assigned by ATC without affecting routes and MEAs.



### MAXIMUM SPEED:

250 kts IAS within 30 NM of SJD VOR and at or below 10000'.  
200 kts IAS within 10 NM of SJD VOR and at or below 3000'.

Note: All VFR aircraft operating within MMSD TMA should have transponder mode 3 A/C with 4096 code capabilities.

NOT TO BE USED FOR ACTUAL NAVIGATION