

Apt Elev
374'

Trans level: FL195

Trans alt: 18500'

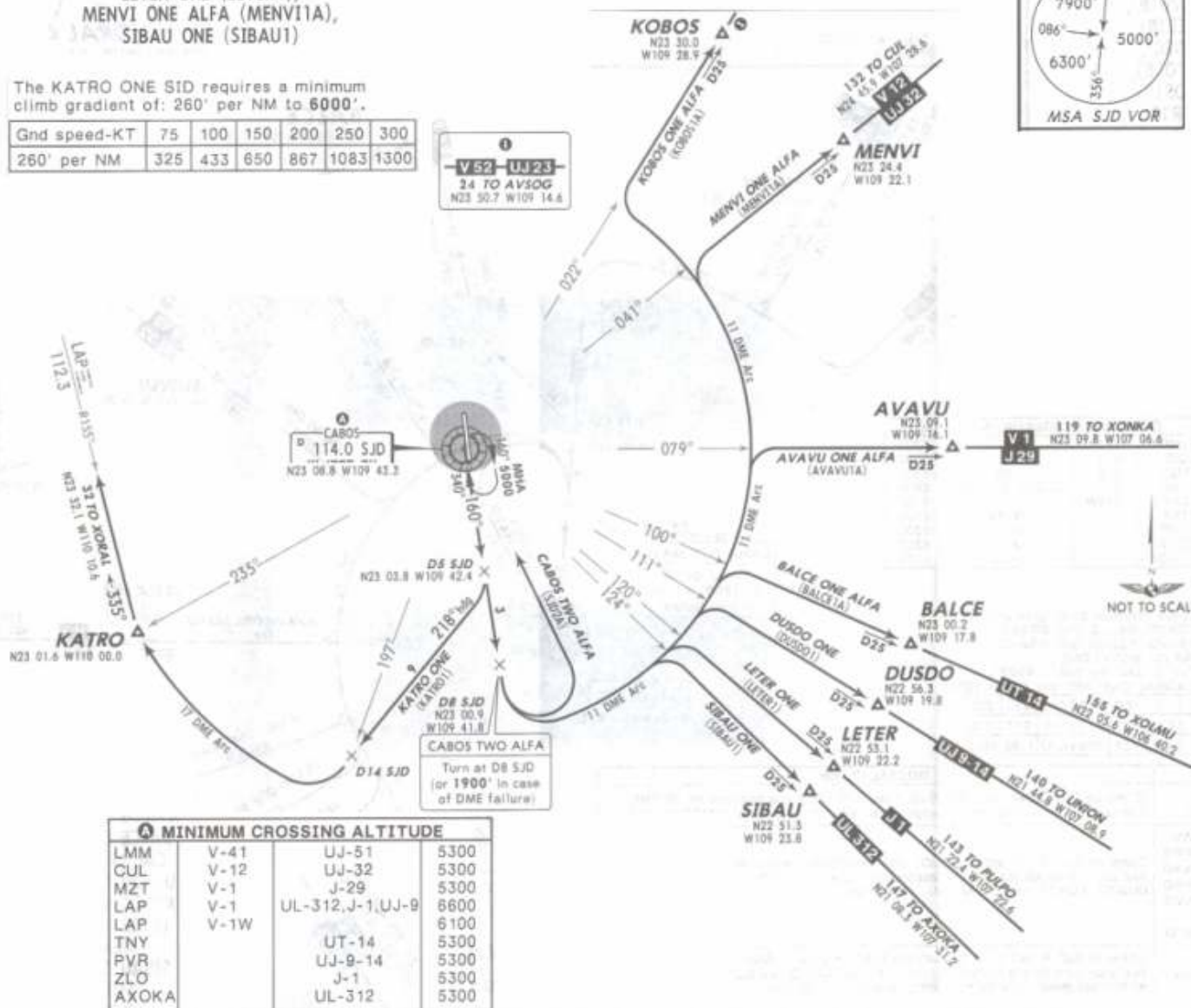
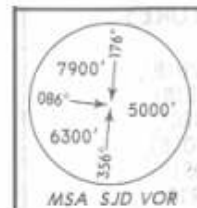
24 MAR 06

RUNWAY 16 DEPARTURES

AVAVU ONE ALFA (AVAVU1A),
 BALCE ONE ALFA (BALCE1A),
 CABOS TWO ALFA (SJD2A),
 DUSDO ONE (DUSDO1),
 KATRO ONE (KATRO1),
 KOBOS ONE ALFA (KOBOS1A),
 LETER ONE (LETER1),
 MENVI ONE ALFA (MENVI1A),
 SIBAU ONE (SIBAU1)

The KATRO ONE SID requires a minimum
 climb gradient of: 260' per NM to 6000'.

Gnd speed-KT	75	100	150	200	250	300
260' per NM	325	433	650	867	1083	1300



MINIMUM CROSSING ALTITUDE			
LMM	V-41	UJ-51	5300
CUL	V-12	UJ-32	5300
MZT	V-1	J-29	5300
LAP	V-1	UL-312, J-1, UJ-9	6600
LAP	V-1W		6100
TNY		UT-14	5300
PVR		UJ-9-14	5300
ZLO		J-1	5300
AXOKA		UL-312	5300

SID	INITIAL CLIMB
AVAVU ONE ALFA BALCE ONE ALFA DUSDO ONE KOBOS ONE ALFA LETER ONE MENVI ONE ALFA SIBAU ONE	Climb on SJD R-160 until D8 SJD, then turn LEFT and proceed on 11 DME Arc until intercepting the corresponding radial from SJD to AVAVU, BALCE, DUSDO, KOBOS, LETER, MENVI, or SIBAU.
CABOS TWO ALFA	Climb on SJD R-160 until D8 SJD (to 1900' in case of DME failure), then teardrop turn to the LEFT within 11 NM to SJD. Cross SJD at the MCA of the assigned route or according to ATC instructions.
KATRO ONE	Climb on SJD R-160 until D5 SJD, then turn RIGHT and proceed heading 218° to intercept SJD R-197 at D14 SJD, turn RIGHT and proceed on the 17 DME Arc to intercept LAP R-155 to KATRO.
ROUTING	
Continue on the assigned route or in accordance with ATC instructions.	

NOT TO BE USED FOR ACTUAL NAVIGATION