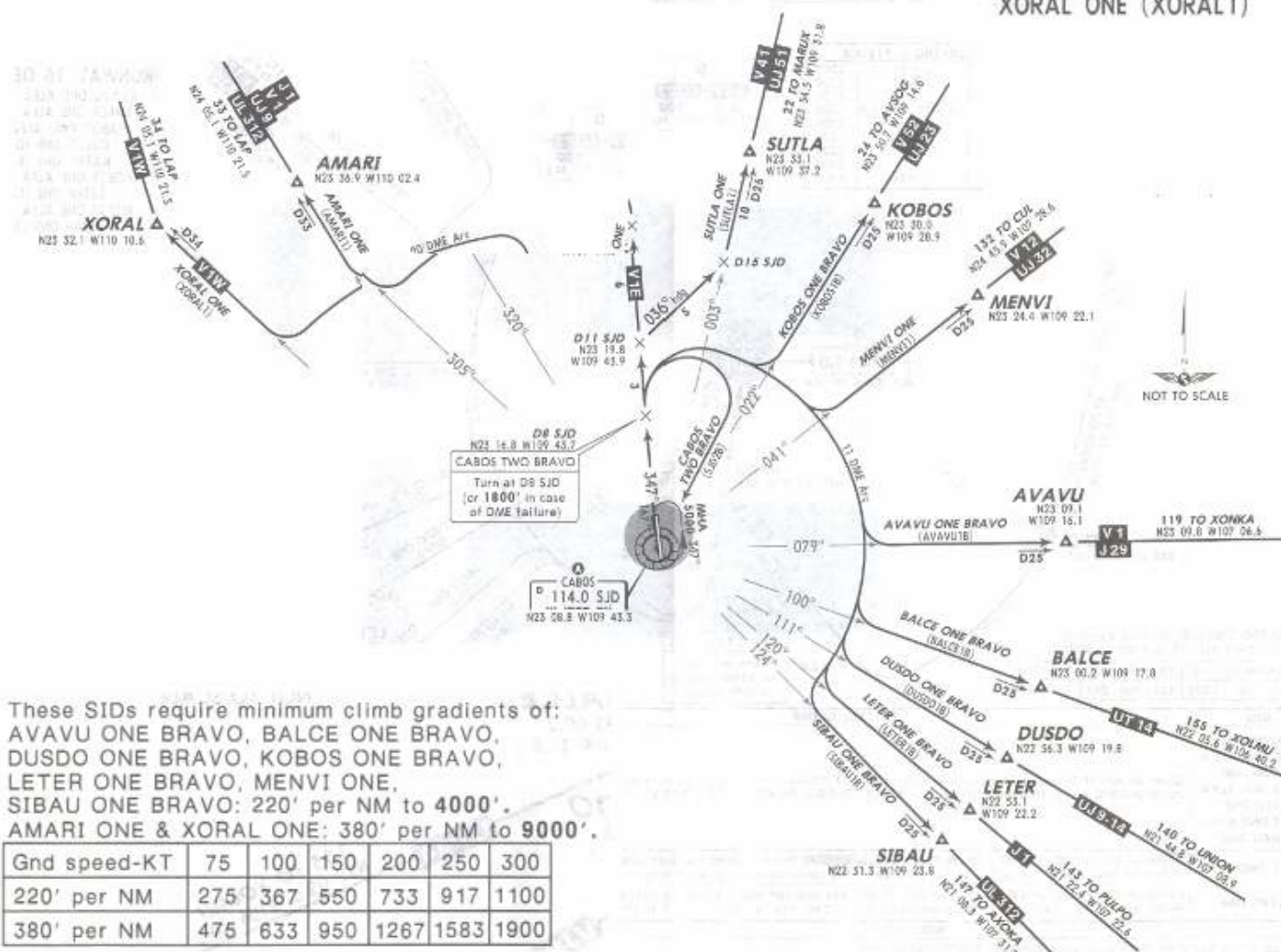


24 MAR 06

A MINIMUM CROSSING ALTITUDE			
LMM	V-41	UJ-51	5300
CUL	V-12	UJ-32	5300
MZT	V-1	J-29	5300
LAP	V-1	UL-312, J-1, UJ-9	6600
LAP	V-1W		6100
TNY		UT-14	5300
PVR		UJ-9-14	5300
ZLO		J-1	5300
AXOKA		UL-312	5300

RUNWAY 34 DEPARTURES

AMARI ONE (AMARI1),
AVAVU ONE BRAVO (AVAVU1B),
BALCE ONE BRAVO (BALCE1B),
CABOS TWO BRAVO (SJD2B),
DUSDO ONE BRAVO (DUSDO1B),
KOBOS ONE BRAVO (KOBOS1B),
LETER ONE BRAVO (LETER1B),
MENVI ONE (MENVI1),
SIBAU ONE BRAVO (SIBAU1B),
SUTLA ONE (SUTLA1),
XORAL ONE (XORAL1)



SID	INITIAL CLIMB
AMARI ONE XORAL ONE	Climb on SJD R-347 until D17 SJD, then turn LEFT and proceed on 20 DME Arc until intercepting the corresponding radial from SJD to AMARI or XORAL.
AVAVU ONE BRAVO BALCE ONE BRAVO DUSDO ONE BRAVO KOBOS ONE BRAVO LETER ONE BRAVO MENVI ONE SIBAU ONE BRAVO	Climb on SJD R-347 until D8 SJD, then turn RIGHT and proceed on 11 DME Arc until intercepting the corresponding radial from SJD to AVAVU, BALCE, DUSDO, KOBOS, LETER, MENVI, or SIBAU.

NOT TO BE USED FOR ACTUAL NAVIGATION