

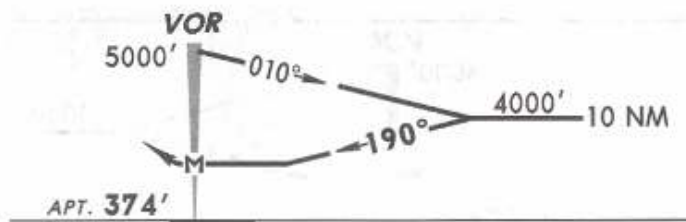
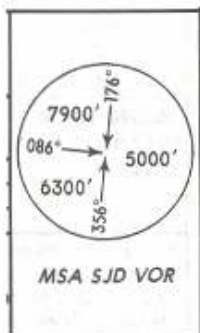
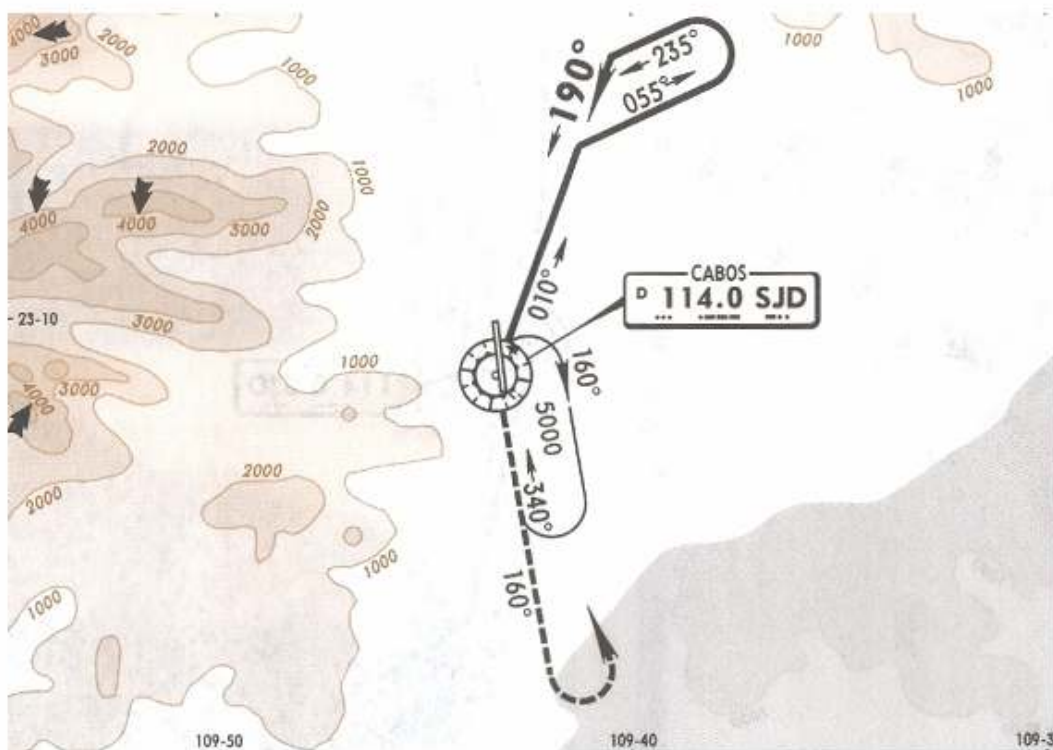
7 NOV 03

\*ATIS  
127.6

\*SAN JOSE Approach (R)  
120.9

\*SAN JOSE Tower  
118.9

VOR SJD <b>114.0</b>	Final Apch Crs <b>190°</b>	No FAF	MDA(H) Refer to minimums	Apt Elev <b>374'</b>
----------------------------	----------------------------------	--------	--------------------------------	----------------------



**MISSED APCH:** Climb outbound on SJD VOR R-160, make a LEFT teardrop turn within 10 NM to SJD VOR to the minimum holding altitude.

Max Distance Outbound Leg 7 NM							
Gnd speed-Kts	80	100	120	140	160	180	200
Time	5:15	4:12	3:30	3:00	2:38	2:20	2:06

Alt Set: MB (IN on req) Apt Elev: 13 MB Trans level: FL 195 Trans alt: 18500'  
1. CAUTION: Do not use radio altimeter as reference to determine altitude over airport due to orographic conditions. 2. In case of DME failure at any point during the procedure, maintain last altitude and proceed to the station in accordance with ATC instructions.

NOT TO BE USED FOR ACTUAL NAVIGATION