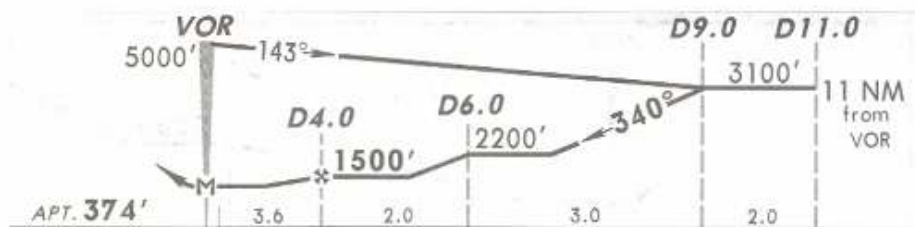
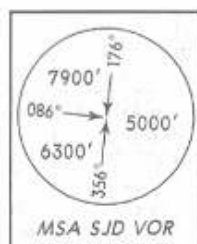
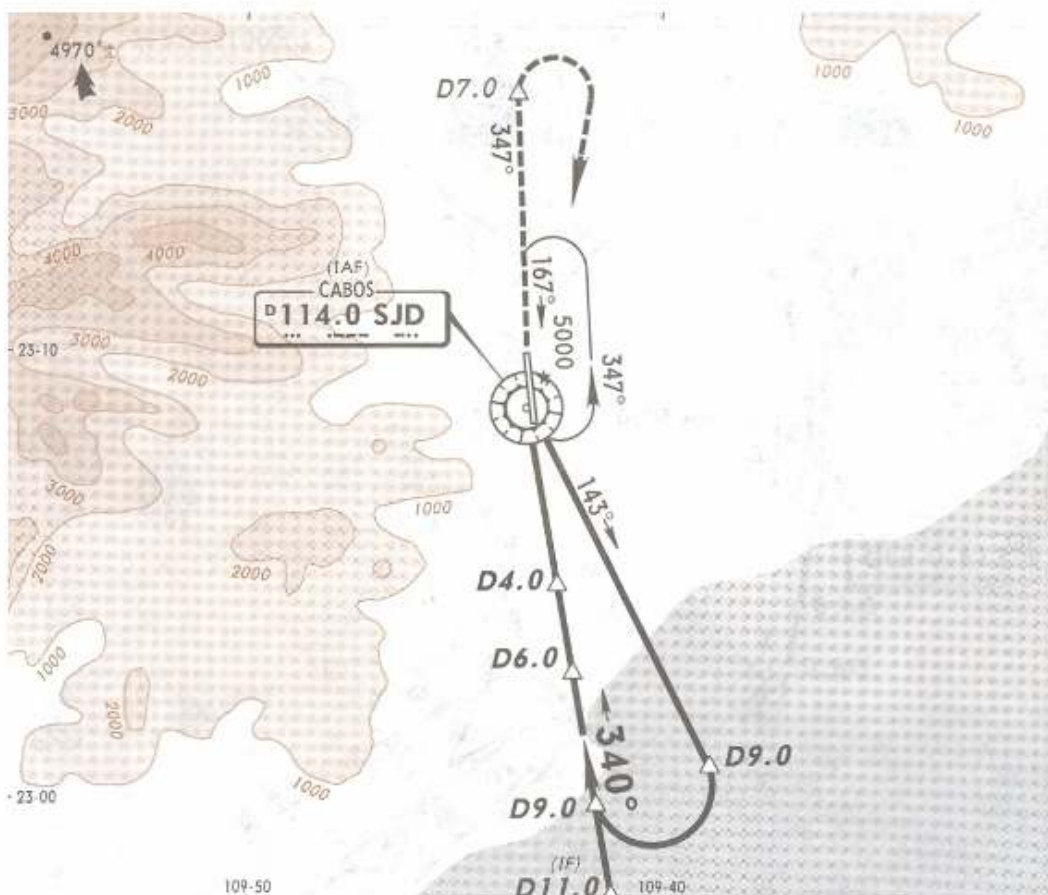


*ATIS 127.6 *SAN JOSE Approach (R) 120.9 *SAN JOSE Tower 118.9

VOR SJD 114.0	Final Apch Crs 340°	Minimum Alt D4.0 1500' (1126')	MDA(H) 820' (446')	Apt Elev 374'
---------------------	---------------------------	--------------------------------------	-----------------------	---------------



MISSED APCH: Climb outbound on SJD VOR R-347 to D7.0, make a RIGHT turn within 10 NM to SJD VOR to the minimum holding altitude.

Alt Set: MB (IN on req) Apt Elev: 14 MB Trans level: FL 195 Trans alt: 18500'
1. CAUTION: Do not use radio altimeter as reference to determine altitude over airport due to orographic conditions. 2. In case of DME failure at any point during the procedure, maintain last altitude and proceed to the station in accordance with ATC instructions.