

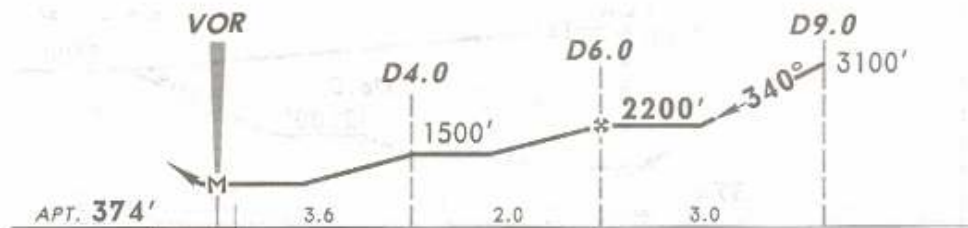
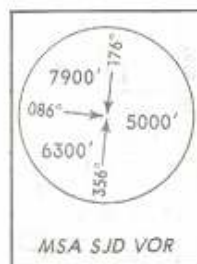
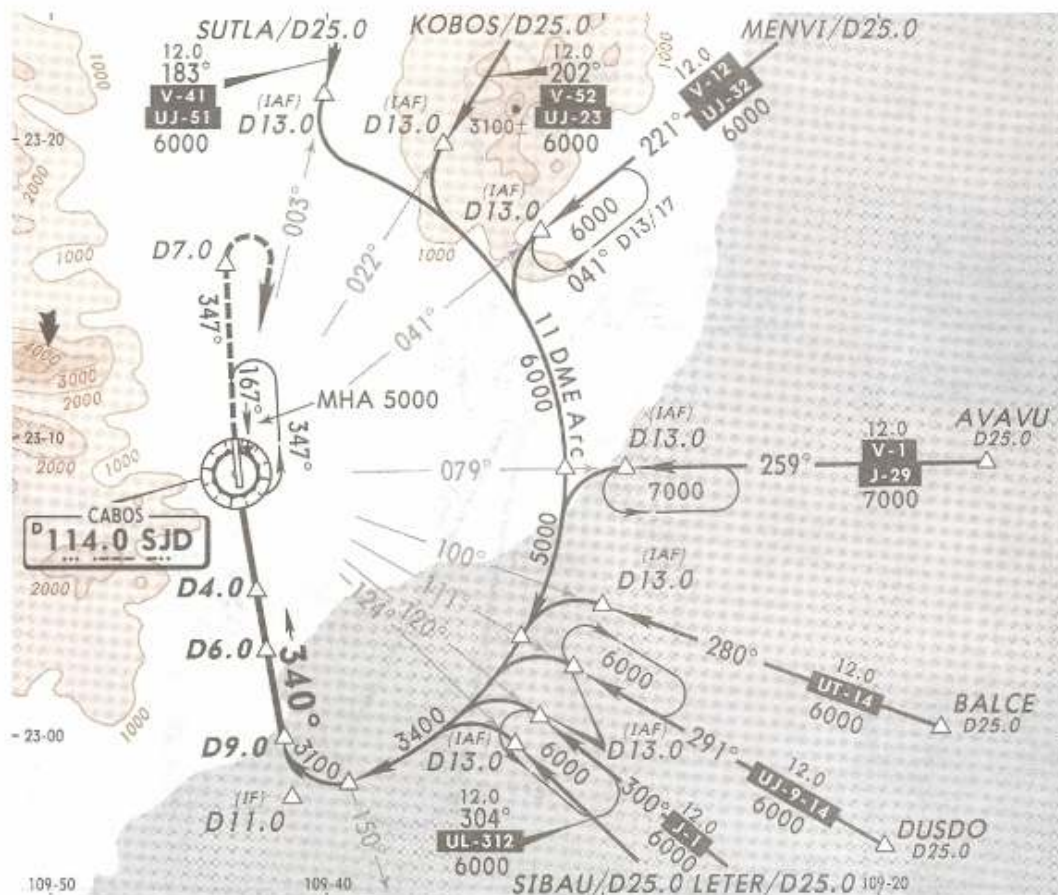
*ATIS
127.6

*SAN JOSE Approach (R)
120.9

*SAN JOSE Tower
118.9

8 FEB 08

VOR SJD	Final Apch Crs	Minimum Alt D6.0	MDA(H)	Apt Elev
114.0	340°	2200' (1826')	820' (446')	374'



MISSED APCH: Climb outbound on SJD VOR R-347 to D7.0, make a RIGHT teardrop turn within 10 NM to SJD VOR to the minimum holding altitude.

Alt Set: MB (IN on req) Apt Elev: 14 MB Trans level: FL 195 Trans alt: 18500'
 1. CAUTION: Do not use radio altimeter as reference to determine altitude over airport due to orographic conditions. 2. In case of DME failure at any point during the procedure, maintain last altitude and proceed to the station in accordance with ATC instructions.
 3. Do not use the holding patterns simultaneously and at the same altitude.

NOT TO BE USED FOR ACTUAL NAVIGATION