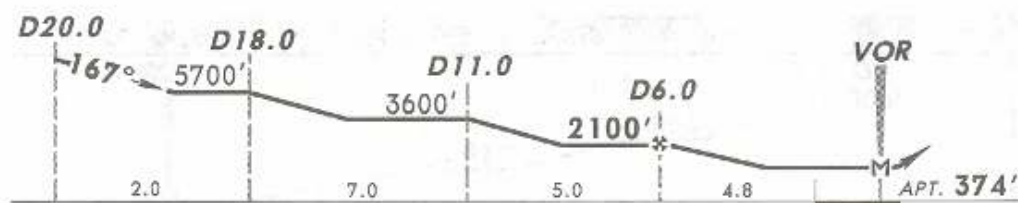
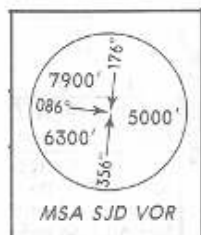
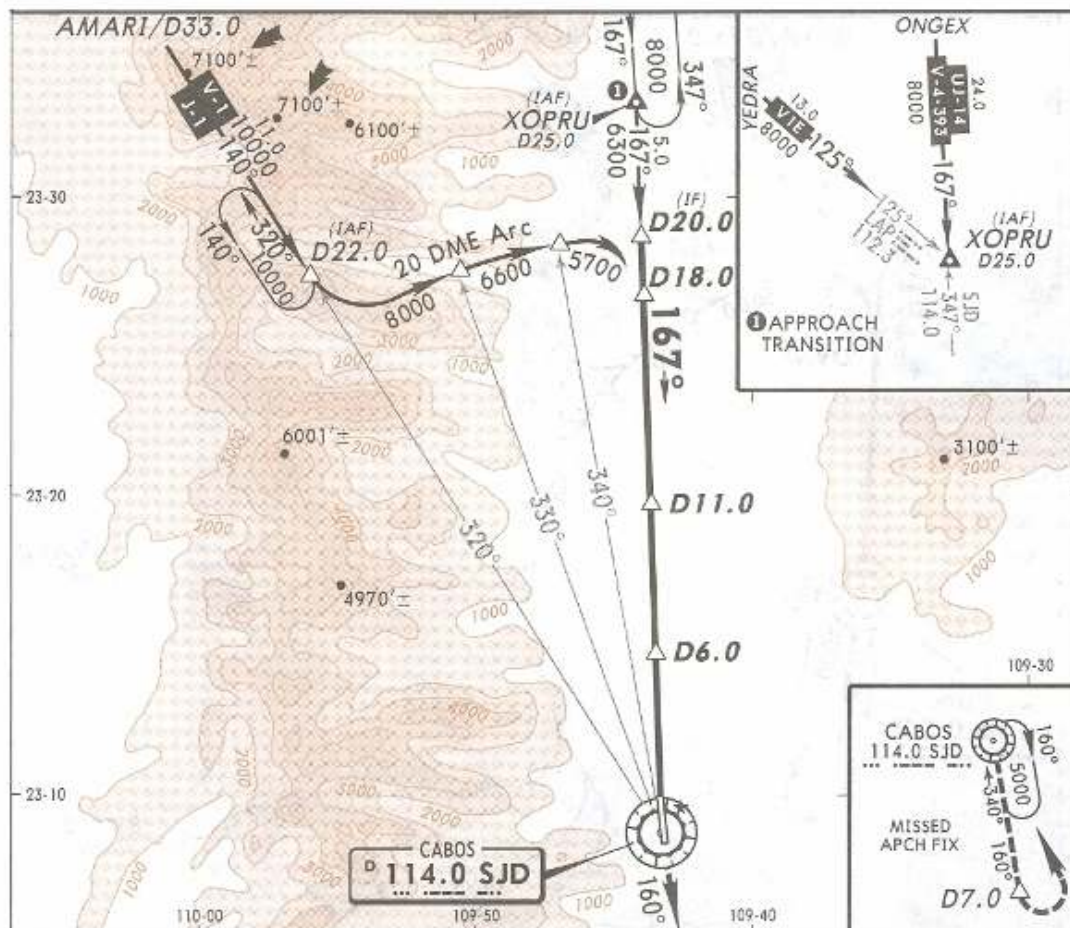


22 FEB 08

\*ATIS 127.6    \*SAN JOSE Approach (R) 120.9    \*SAN JOSE Tower 118.9

VOR SJD	Final Apch Crs	Minimum Alt D6.0	MDA(H)	Apt Elev
114.0	167°	2100' (1726')	920' (546')	374'



**MISSED APCH:** Climb outbound on SJD VOR R-160 to D7.0, make a LEFT turn within 10 NM to SJD VOR to the minimum holding altitude.

Alt Set: MB (IN on req)    Apt Elev: 14 MB    Trans Level: FL 195    Trans alt: 18500'  
1. CAUTION: Do not use radio altimeter as reference to determine altitude over airport due to orographic conditions. 2. In case of DME failure at any point during the procedure, maintain last altitude and proceed to the station in accordance with ATC instructions.

NOT TO BE USED FOR ACTUAL NAVIGATION