

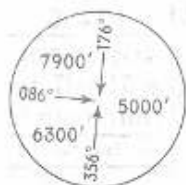
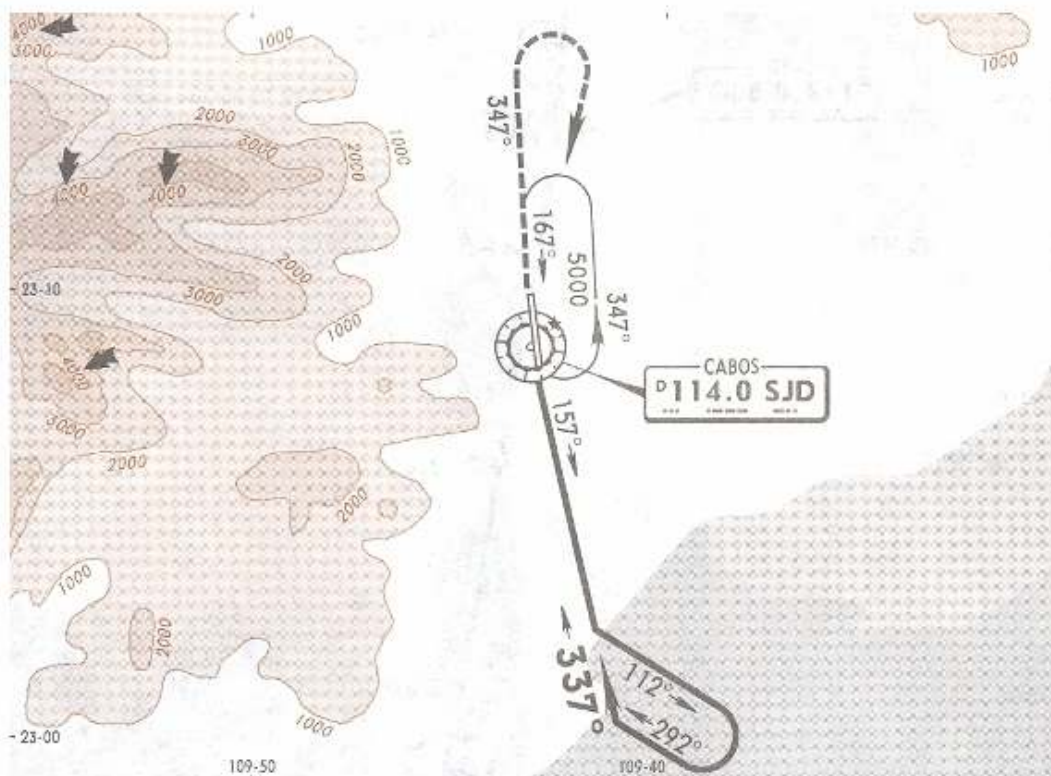
*ATIS
127.6

*SAN JOSE Approach (R)
120.9

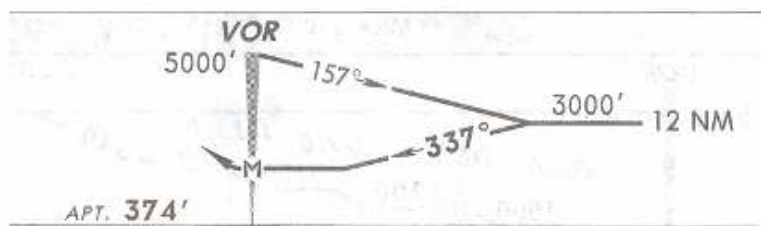
*SAN JOSE Tower
118.9

8 FEB 08

VOR SJD	Final Apch Crs	No FAF	MDA(H)	Apt Elev
114.0	337°		1160' (786')	374'



MSA SJD VOR



MISSED APCH: Climb outbound on SJD VOR R-347, make a RIGHT teardrop turn within 10 NM to SJD VOR to the minimum holding altitude.

Max Distance Outbound Leg 7 NM							
Gnd speed-Kts	80	100	120	140	160	180	200
Time	5:15	4:12	3:30	3:00	2:38	2:20	2:06

Alt Set: MB (IN on req) Apt Elev: 14 MB Trans level: FL 195 Trans alt: 18500'
1. CAUTION: Do not use radio altimeter as reference to determine altitude over airport due to orographic conditions.

NOT TO BE USED FOR ACTUAL NAVIGATION