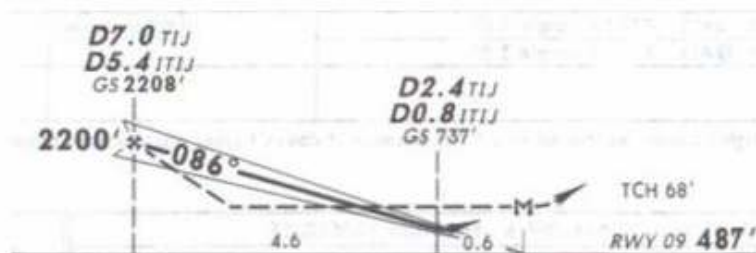
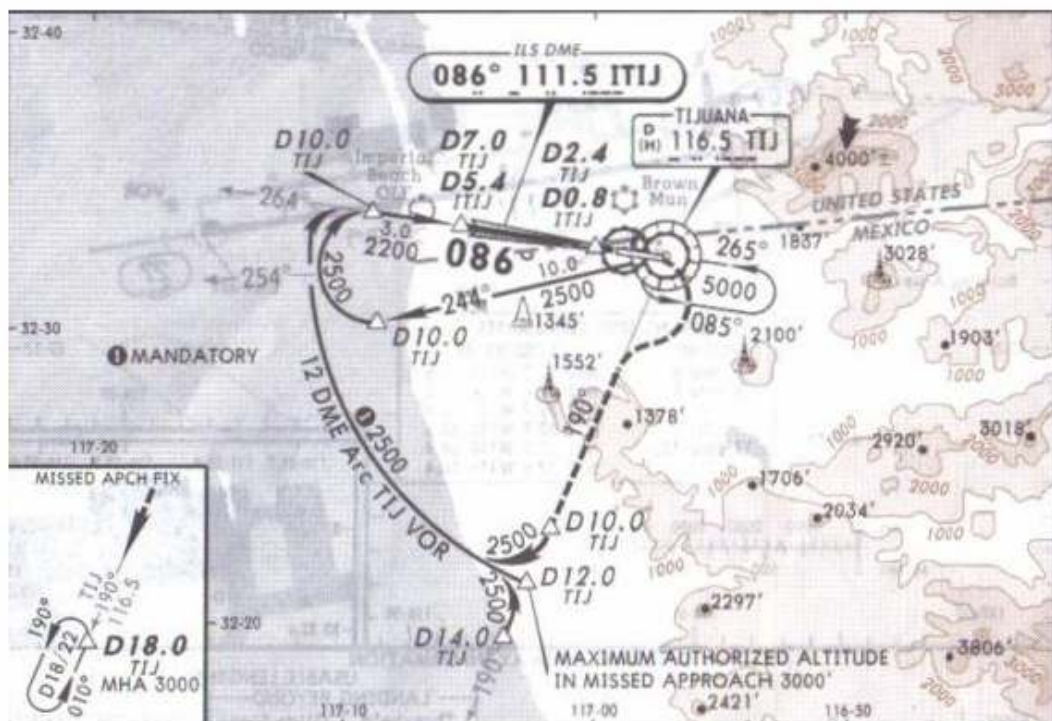


\*ATIS 127.9 \*TIJUANA Approach (R) 119.5 \*TIJUANA Tower 120.3 118.1

22 FEB 08

LOC	Final Apch Crs	GS D7.0 TIJ D5.4 ITIJ	ILS DA(H) (CONDITIONAL)	Apt Elev 487'
111.5	086°	2208' (1721')	737' (250')	Rwy 09 487'



**MISSED APCH:** Climb direct to 800', turn RIGHT and climb to intercept TIJ VOR R-190 outbound to D10.0 TIJ, turn RIGHT and join the 12 DME Arc or continue on TIJ VOR R-190 to hold at D18/22 TIJ, according to ATC instructions.

Alt Set: MB (IN on req) Rwy Elev: 18 MB Trans level: FL 195 Trans alt: 18500'  
1. CAUTION: Do not use radio altimeter due to orographic conditions. 2. CAUTION: Light, low altitude, uncontrolled, US VFR traffic patrolling North side of the border.

NOT TO BE USED FOR ACTUAL NAVIGATION