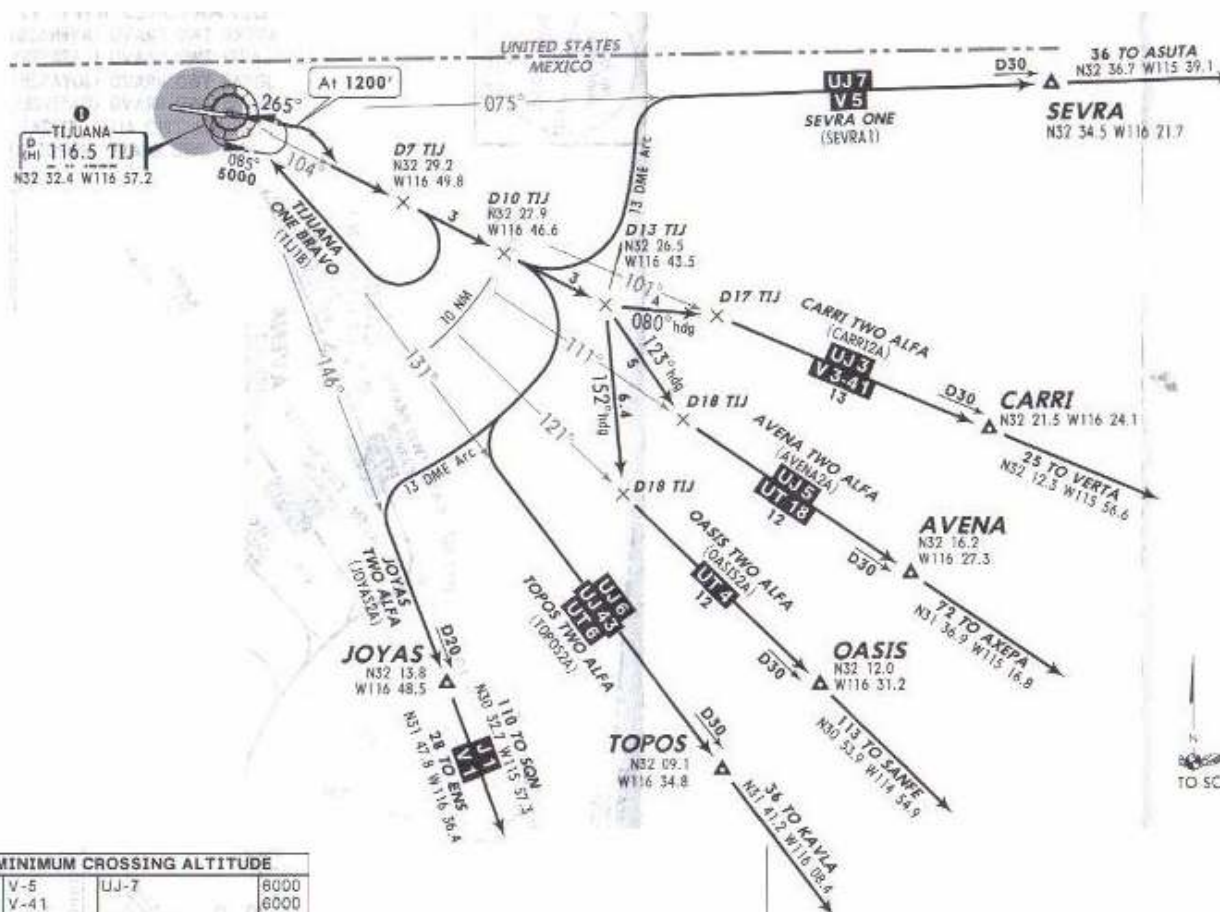
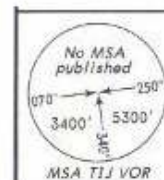


Apt Elev 487' Trans level: FL195 Trans alt: 18500'

8 FEB 08

DEPARTURES RWY 09

AVENA TWO ALFA (AVENA2A),
CARRI TWO ALFA (CARRI2A),
JOYAS TWO ALFA (JOYAS2A),
OASIS TWO ALFA (OASIS2A),
SEVRA ONE (SEVRA1),
TIJUANA ONE BRAVO (TIJ1B),
TOPOS TWO ALFA (TOPOS2A)



① MINIMUM CROSSING ALTITUDE			
MXL	V-5	UJ-7	6000
MXL	V-41	UJ-3	6000
PPE	V-3	UJ-3	6000
HMO		UJ-5, UT-18	5000
LMM		UT-4	5000
SRL		UJ-6, UJ-43, UT-6	5000
ENS	V-1		4000
SQN	V-42		4000
SQN	V-1	J-1	4000
MZB		J-1	3700

SID	INITIAL CLIMB	ALTITUDE
AVENA TWO ALFA	Climb on runway heading to 1200', turn RIGHT and continue on TIJ R-104 to D13 TIJ, then turn RIGHT heading 123° to intercept TIJ R-111 to AVENA. Continue on the assigned route or in accordance with ATC instructions.	
CARRI TWO ALFA	Climb on runway heading to 1200', turn RIGHT and continue on TIJ R-104 to D13 TIJ, then turn LEFT heading 080° to intercept TIJ R-101 to CARRI. Continue on the assigned route or in accordance with ATC instructions.	
JOYAS TWO ALFA, TOPOS TWO ALFA	Climb on runway heading to 1200', turn RIGHT and continue on TIJ R-104 to D10 TIJ, then turn RIGHT and proceed to join the TIJ 13 DME Arc to intercept the corresponding radial from TIJ to JOYAS or TOPOS. Continue on the assigned route or in accordance with ATC instructions.	
OASIS TWO ALFA	Climb on runway heading to 1200', turn RIGHT and continue on TIJ R-104 to D13 TIJ, then turn RIGHT heading 152° to intercept TIJ R-121 to OASIS. Continue on the assigned route or in accordance with ATC instructions.	
SEVRA ONE	Climb on runway heading to 1200', turn RIGHT and continue on TIJ R-104 to D10 TIJ, then turn LEFT and proceed to join the TIJ 13 DME Arc to intercept TIJ R-075 to SEVRA. Continue on the assigned route or in accordance with ATC instructions.	
TIJUANA ONE BRAVO	Climb on runway heading to 1200', turn RIGHT and continue on TIJ R-104 to D7 TIJ, then turn RIGHT within 10 NM to TIJ and depart at the MCA ① of the assigned route or in accordance with ATC instructions.	
		MAINTAIN 6000' until D15 TIJ has been crossed.

These STDs require a minimum climb gradient of 340' per NM until 6000'.

Gnd speed-KT	75	100	150	200	250	300
340' per NM	425	567	850	1133	1417	1700

NOT TO BE USED FOR ACTUAL NAVIGATION