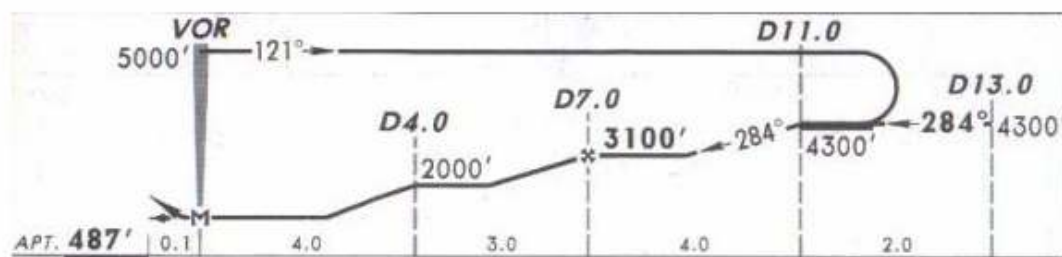
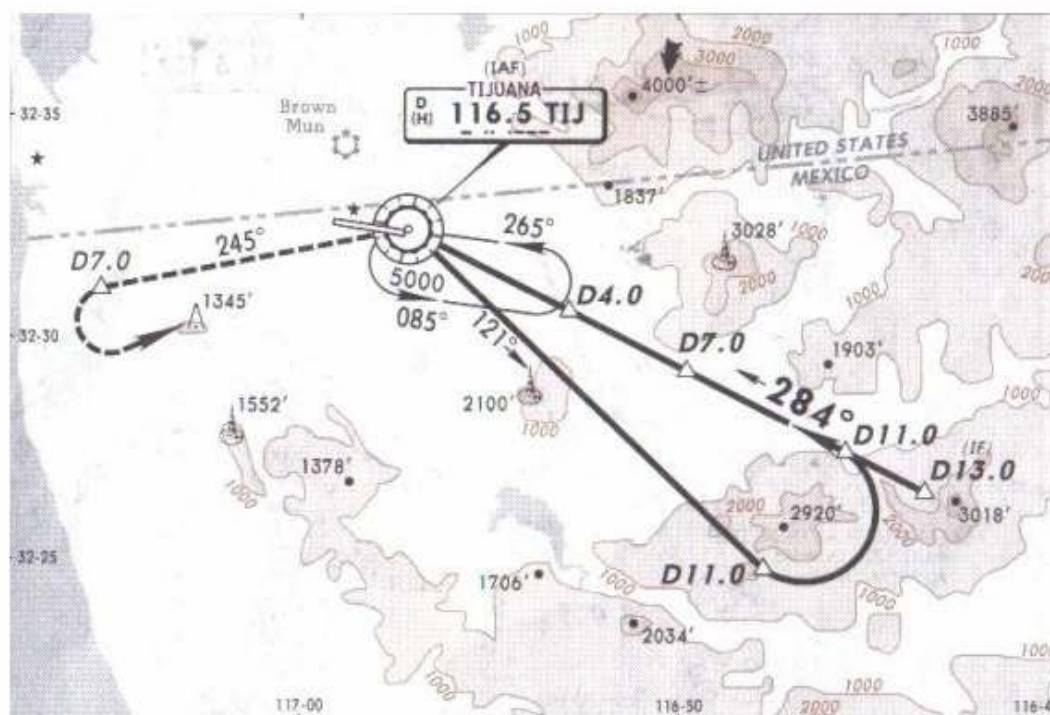


28 DEC 07

\*ATIS 127.9 \*TIJUANA Approach (R) 119.5 \*TIJUANA Tower 120.3 118.1

| VOR<br>TIJ | Final<br>Apch Crs | Minimum Alt<br>D7.0 | MDA(H)       | Apt Elev |
|------------|-------------------|---------------------|--------------|----------|
| 116.5      | 284°              | 3100' (2613')       | 1000' (513') | 487'     |



**MISSED APCH:** Climb outbound on TIJ VOR R-245 to D7.0, make LEFT turn within 10 NM and proceed to TIJ VOR to the minimum holding altitude.

Alt Set: MB (IN on req) Apt Elev: 18 MB Trans level: FL 195 Trans alt: 18500'  
1. CAUTION: Do not use radio altimeter due to orographic conditions.  
2. CAUTION: Upon establishing visual contact with the runway do not depart from the final approach until D5.0. 3. Max IAS 160 Kts (or minimum maneuvering) on approach after D15.0.

NOT TO BE USED FOR ACTUAL NAVIGATION