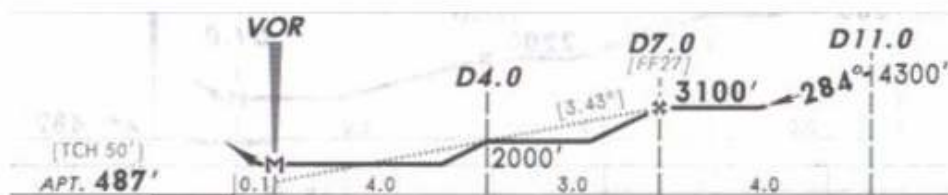
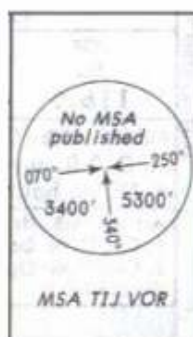
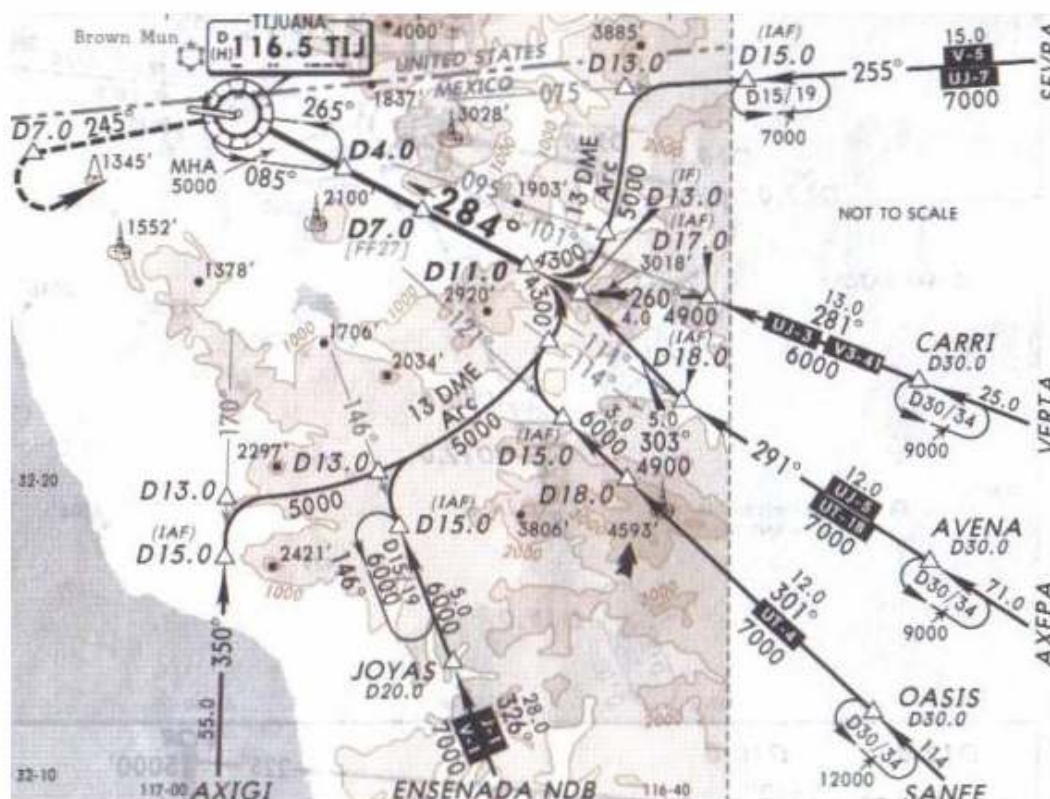


*ATIS 127.9 *TIJUANA Approach (R) 119.5 120.3 *TIJUANA Tower 118.1

28 DEC 07

VOR TIJ	Final Apch Crs	Minimum Alt D7.0	MDA(H)	Apt Elev
116.5	284°	3100' (2613')	1000' (513')	487'



MISSED APCH: Climb outbound on TIJ VOR R-245 to D7.0, make LEFT turn within 10 NM and proceed to TIJ VOR to the minimum holding altitude.

Alt Set: MB (IN on req) Apt Elev: 18 MB Trans level: FL 195 Trans alt: 18500
1. CAUTION: Do not use radio altimeter due to orographic conditions. 2. CAUTION: Upon establishing visual contact with the runway do not depart from the final approach radial until D5.0. 3. CAUTION: In case of failure of the TIJ DME at any point of the procedure maintain last altitude and proceed to the station in accordance with instructions from ATC. 4. Max IAS 160 Kts (or minimum maneuvering) on approach after D15.0. 5. Do not use holdings simultaneously at the minimum holding altitude.

NOT TO BE USED FOR ACTUAL NAVIGATION