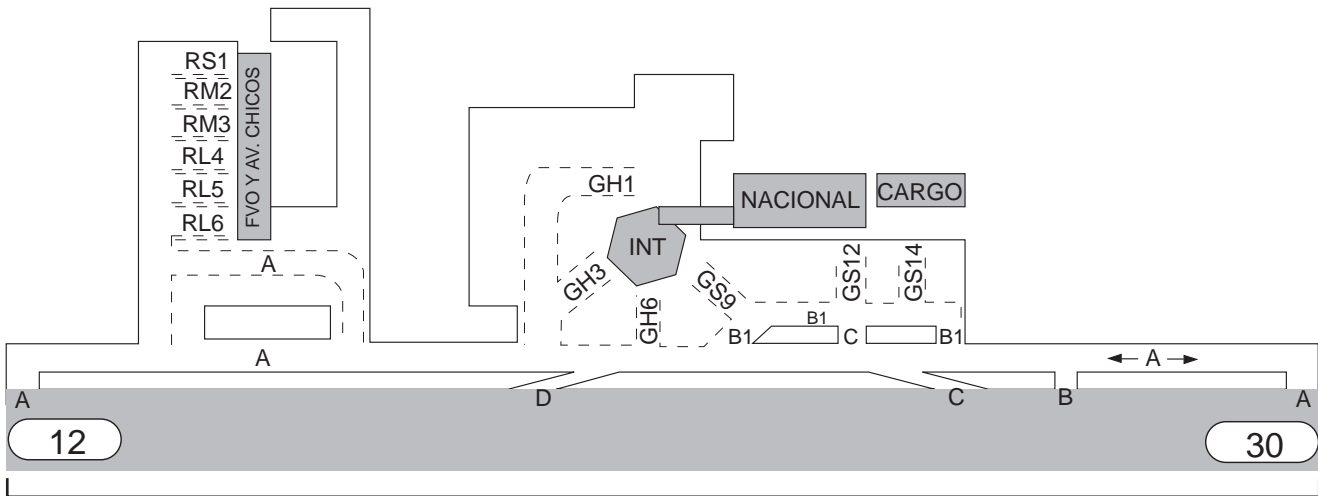


MERIDA CENTER	MMID_CTR	128.30
CANCUN APROX.	MMUN_APP	120.40
CANCUN TWR	MMUN_TWR	118.60
CUN VOR		113.40
ILS RWY 12		111.10

## AIRPORT INFO.



3500m X 60m

ELEVATION: 23 FT VAR. 2° E

### RWY ADITONAL INFORMATION

PISTA	ILUMINACION	DISTANCIAS DECLARADAS									
		TORA		ASDA		TODA		LDA		ANCHO	
		m	ft	m	ft	m	ft	m	ft	m	ft
12	HIRL-PAPI(3.0°)	3500	11483	3500	11483	3500	11483	3500	11483	60	197
30	HIRL-PAPI(3.0°)	3500	11483	3500	11483	3500	11483	3500	11483		

<b>METEOROLOGY MINIMUM</b> TECHO EN FT Y VISIBILIDAD EN SM Y m			<b>MCA,</b> MINIMUM ALTITUDES FOR ESTATION  SEE SID CHARTS  CLIMBS  SEE SID CHARTS				<b>ALTERNO</b>	
TYPE	TAKE OFF DAY AND NIGHT							
	RWY 12	RWY 30						
1 Y 2 MOTORES	1/2 (600m)							
3 O MAS MOTORES	1/2 (600m)		ILS 600-2 (1300FT)  OTHERS APP 800-2 (1300FT)					

**NOTAS:** LIGHTS IN TAXI ROADS

NOT TO BE USED FOR ACTUAL NAVIGATION





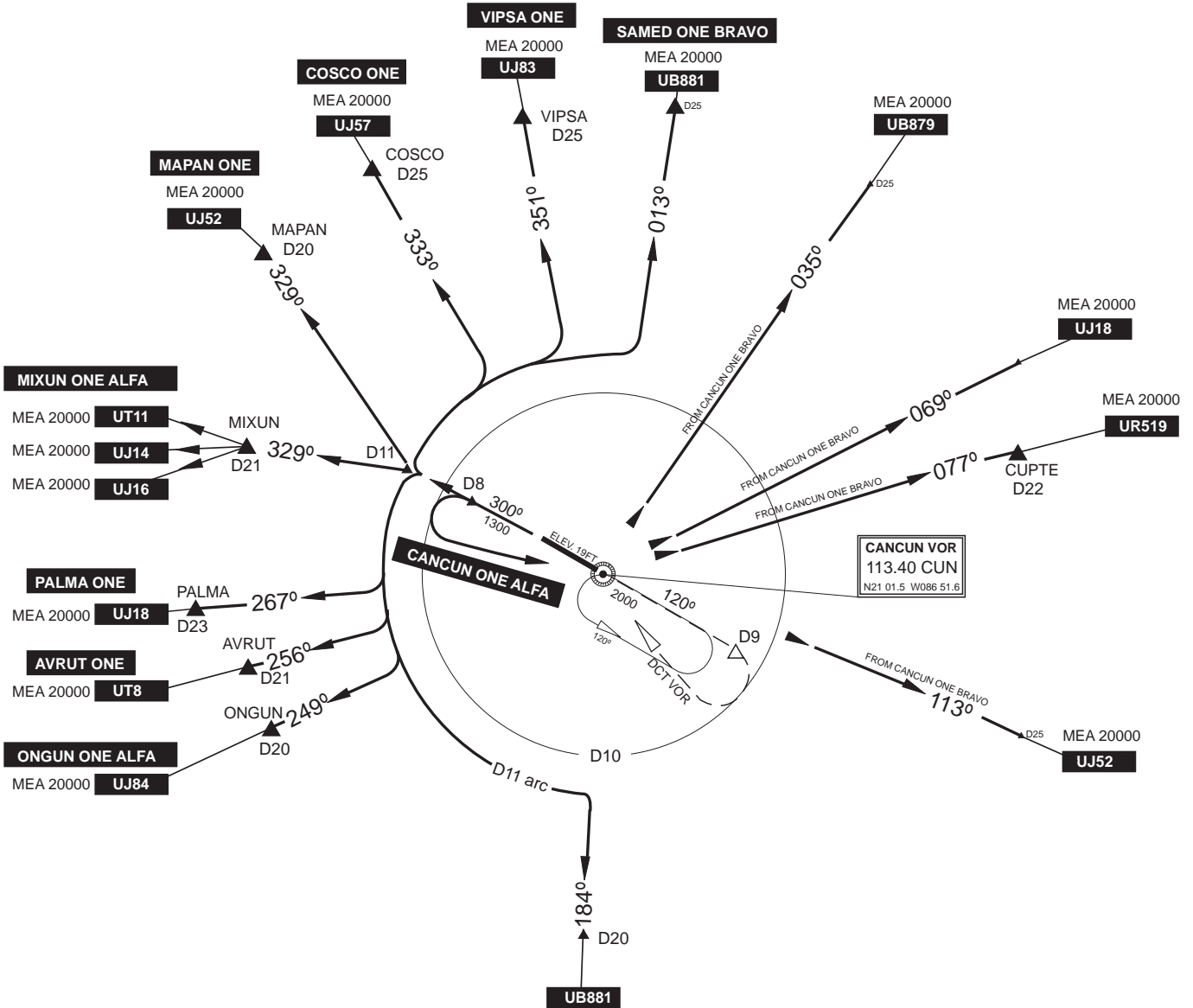
CANCUN, QUINTANA ROO, MEXICO,  
INTERNATIONAL AIRPORT

# MMUN

MERIDA CENTER	MMID_CTR	128.30
CANCUN APROX.	MMUN_APP	120.40
CANCUN TWR	MMUN_TWR	118.60
CUN VOR		113.40

## DEPART SYSTEM BY INSTRUMENTS

# RWY 30



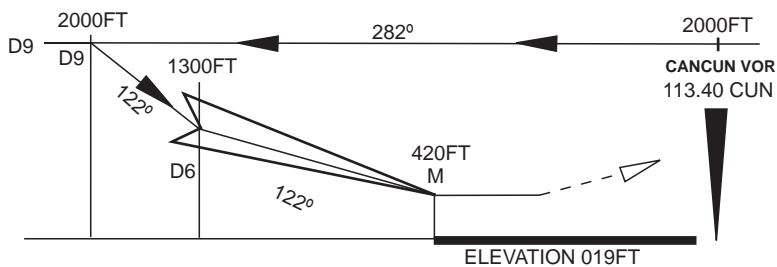
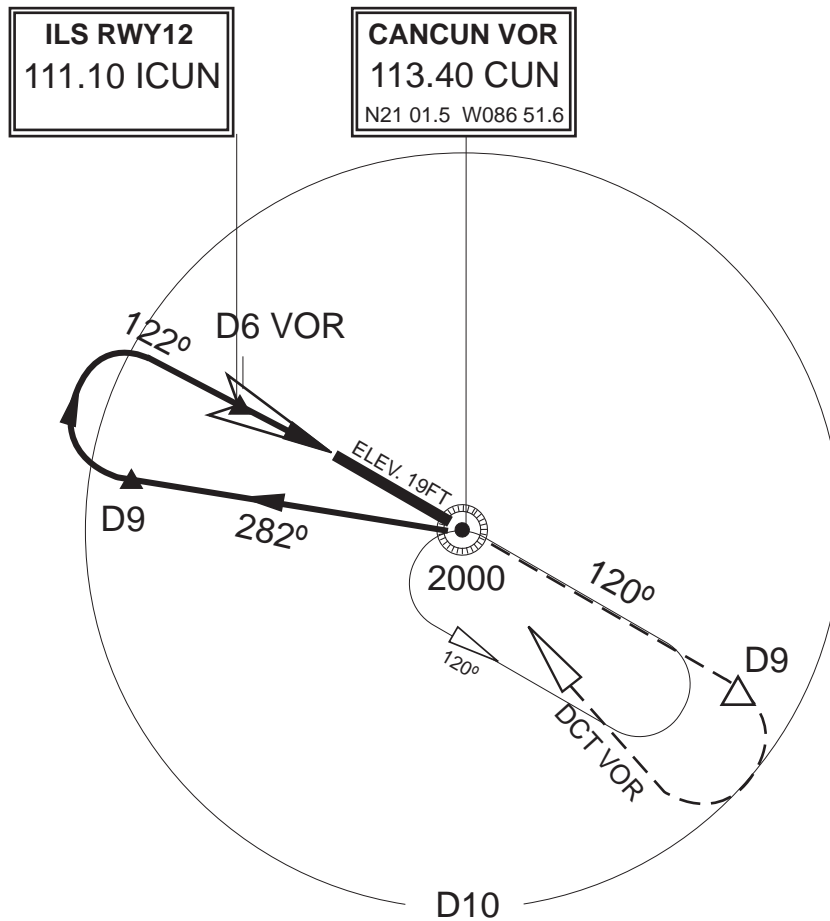
**DME FAILURE**

FAILURE AT ANY POINT DURING THE PROCEDURE, MAINTAIN LAST ALTITUDE AND PRECEED TO THE STATION IN ACCORDANCE WITH ATC INSTRUCTIONS.

NOT TO BE USED FOR ACTUAL NAVIGATION

MERIDA CENTER	MMID_CTR	128.30
CANCUN APROX.	MMUN_APP	120.40
CANCUN TWR	MMUN_TWR	118.60
CUN VOR		113.40
ILS RWY 12		111.10

## APPROACH SYSTEM BY INSTRUMENTS ILS DME / RWY12



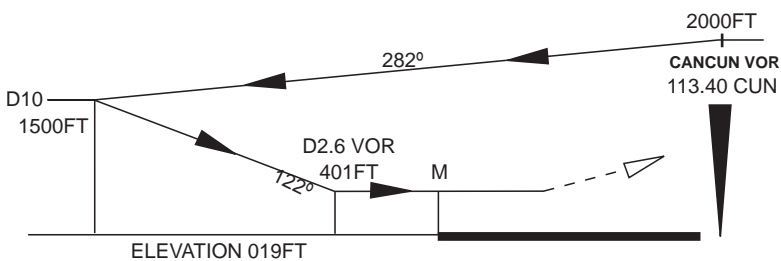
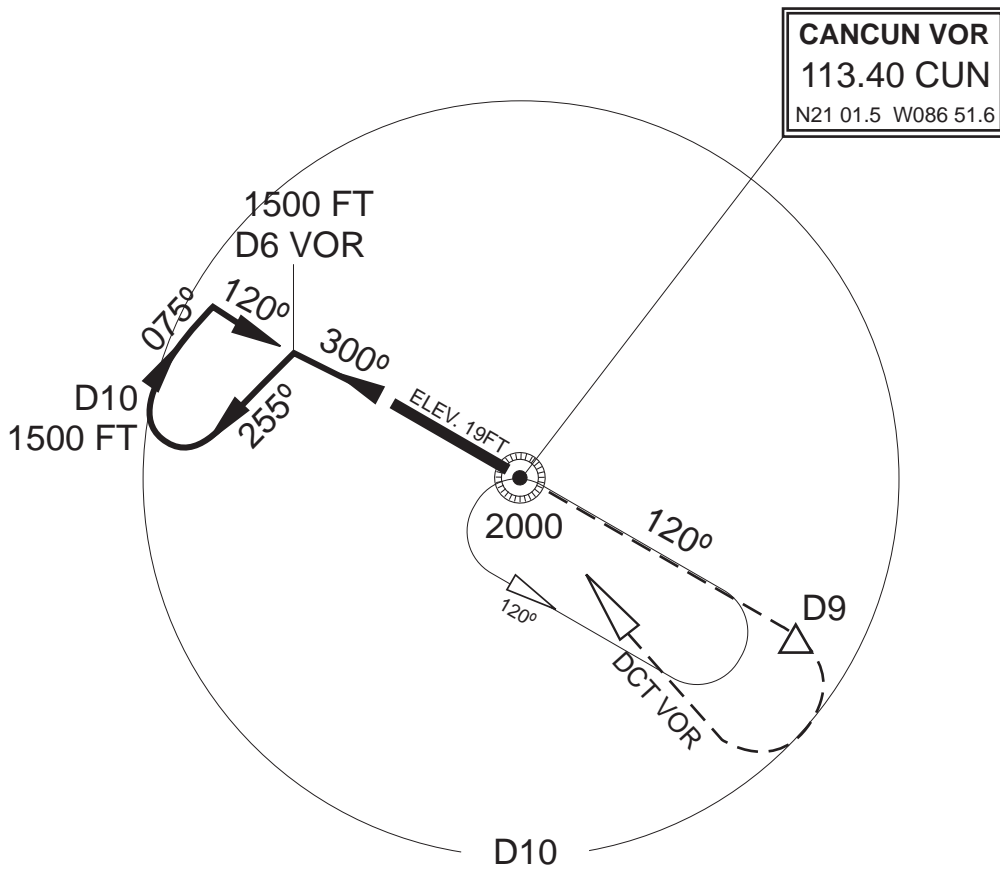
### MISSED APPROACH

CLIMB OUTBOUND CUN VOR R-120 TO 2000FT  
TURN RIGHT WITHIN 10NM TO CUN VOR.  
ON VERTICAL CUN VOR START WITH  
LEFT TURNS WAITING PROCEDURE

NOT TO BE USED FOR ACTUAL NAVIGATION

MERIDA CENTER	MMID_CTR	128.30
CANCUN APROX.	MMUN_APP	120.40
CANCUN TWR	MMUN_TWR	118.60
CUN VOR		113.40
ILS RWY 12		111.10

## APPROACH SYSTEM BY INSTRUMENTS VOR / RWY12



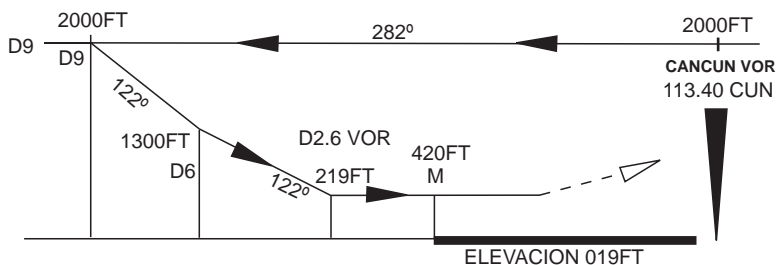
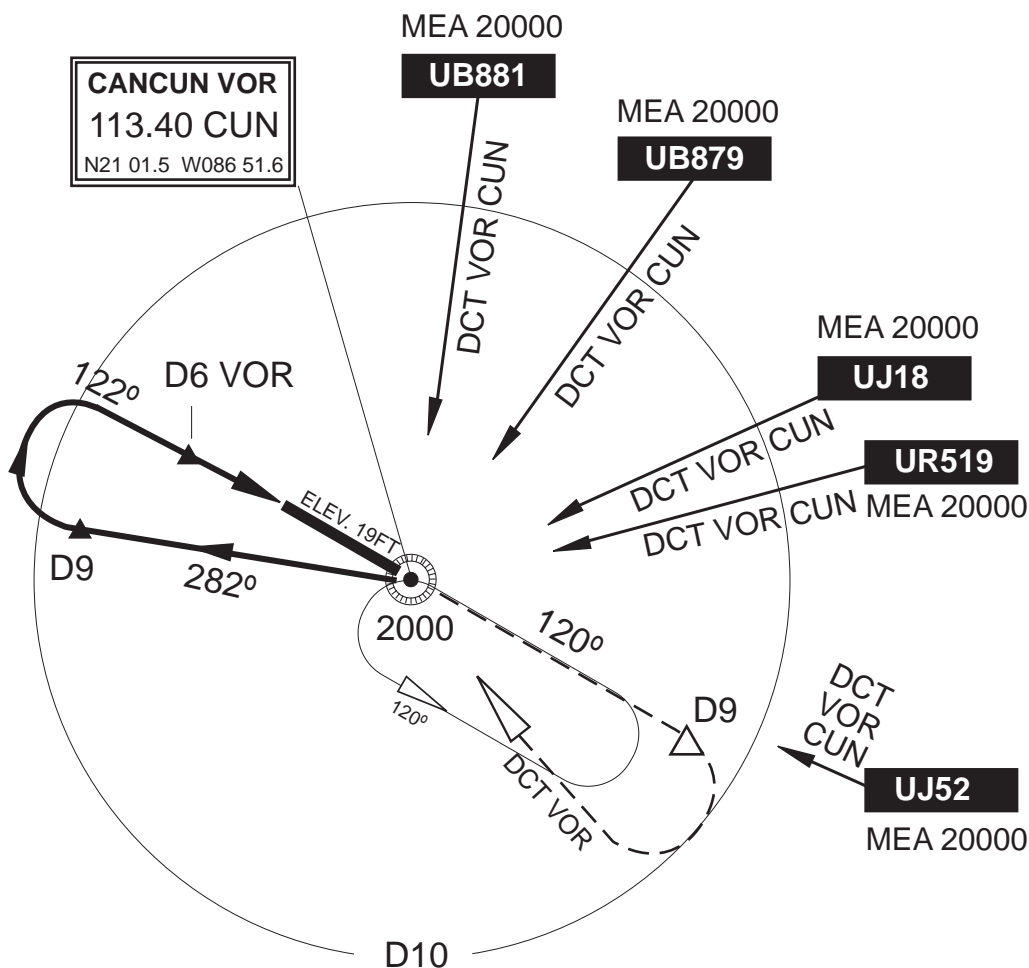
### MISSED APPROACH

CLIMB OUTBOUND CUN VOR R-120 TO 2000 FT  
TURN RIGHT WITHIN 10NM TO CUN VOR.  
ON VERTICAL CUN VOR START WITH  
LEFT TURNS WAITING PROCEDURE

NOT TO BE USED FOR ACTUAL NAVIGATION

MERIDA CENTER	MMID_CTR	128.30
CANCUN APROX.	MMUN_APP	120.40
CANCUN TWR	MMUN_TWR	118.60
CUN VOR		113.40
ILS RWY 12		111.10

## APPROACH SYSTEM BY INSTRUMENTS VOR DME 1 / RWY12



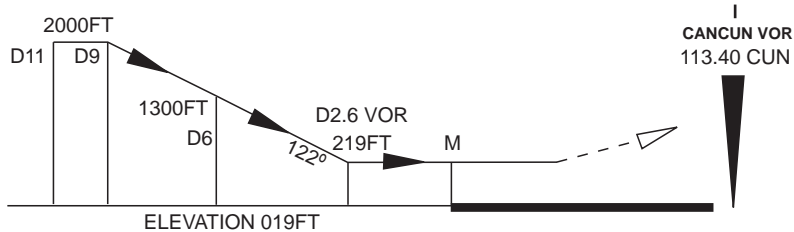
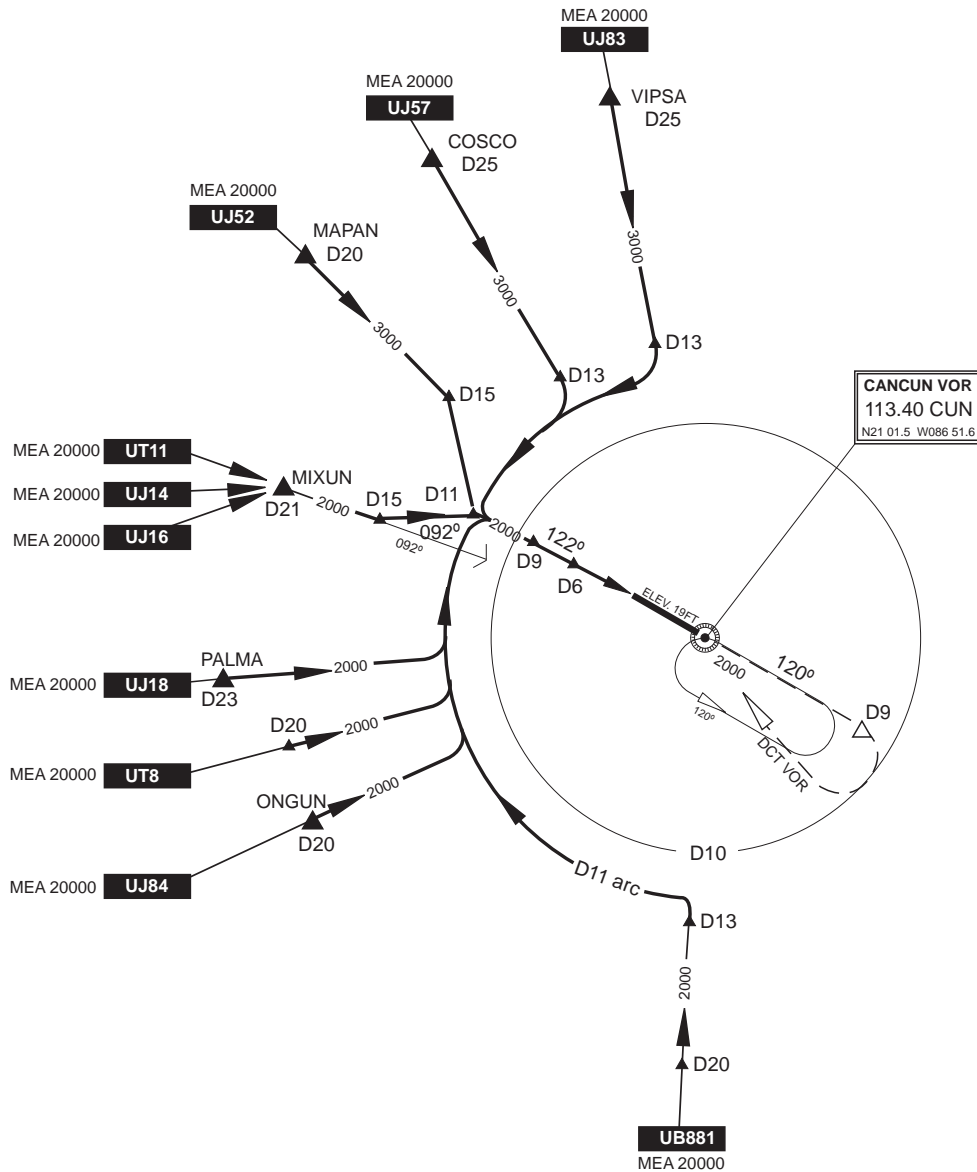
### MISSED APPROACH

CLIMB OUTBOUND CUN VOR R-120 TO 2000FT  
TURN RIGHT WITHIN 10NM TO CUN VOR.  
ON VERTICAL CUN VOR START WITH  
LEFT TURNS WAITING PROCEDURE

NOT TO BE USED FOR ACTUAL NAVIGATION

MERIDA CENTER	MMID_CTR	128.30
CANCUN APROX	MMUN_APP	120.40
CANCUN TWR	MMUN_TWR	118.60
CUN VOR		113.40

## APPROACH SYSTEM BY INSTRUMENTS VOR DME 2 / RWY 12



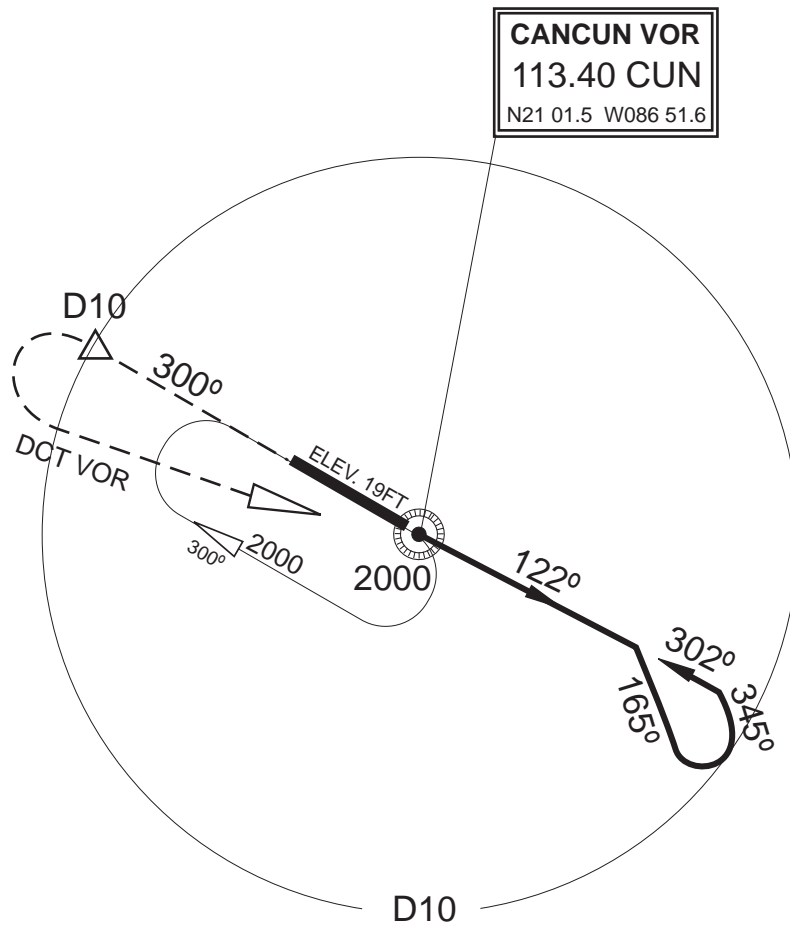
### MISSED APPROACH

CLIMB OUTBOUND CUN VOR R-120 TO 2000FT  
TURN RIGHT WITHIN 10NM TO CUN VOR.  
ON VERTICAL CUN VOR START WITH  
LEFT TURNS WAITING PROCEDURE

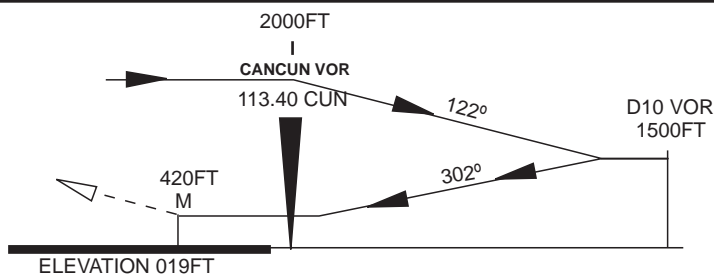
NOT TO BE USED FOR ACTUAL NAVIGATION

MERIDA CENTER	MMID_CTR	128.30
CANCUN APROX	MMUN_APP	120.40
CANCUN TWR	MMUN_TWR	118.60
CUN VOR		113.40
ILS RWY 12		111.10

## APPROACH SYSTEM BY INSTRUMENTS VOR / RWY30



**CANCUN VOR**  
113.40 CUN  
N21 01.5 W086 51.6



### MISSED APPROACH

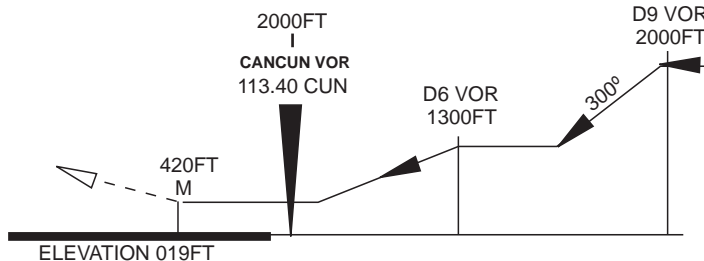
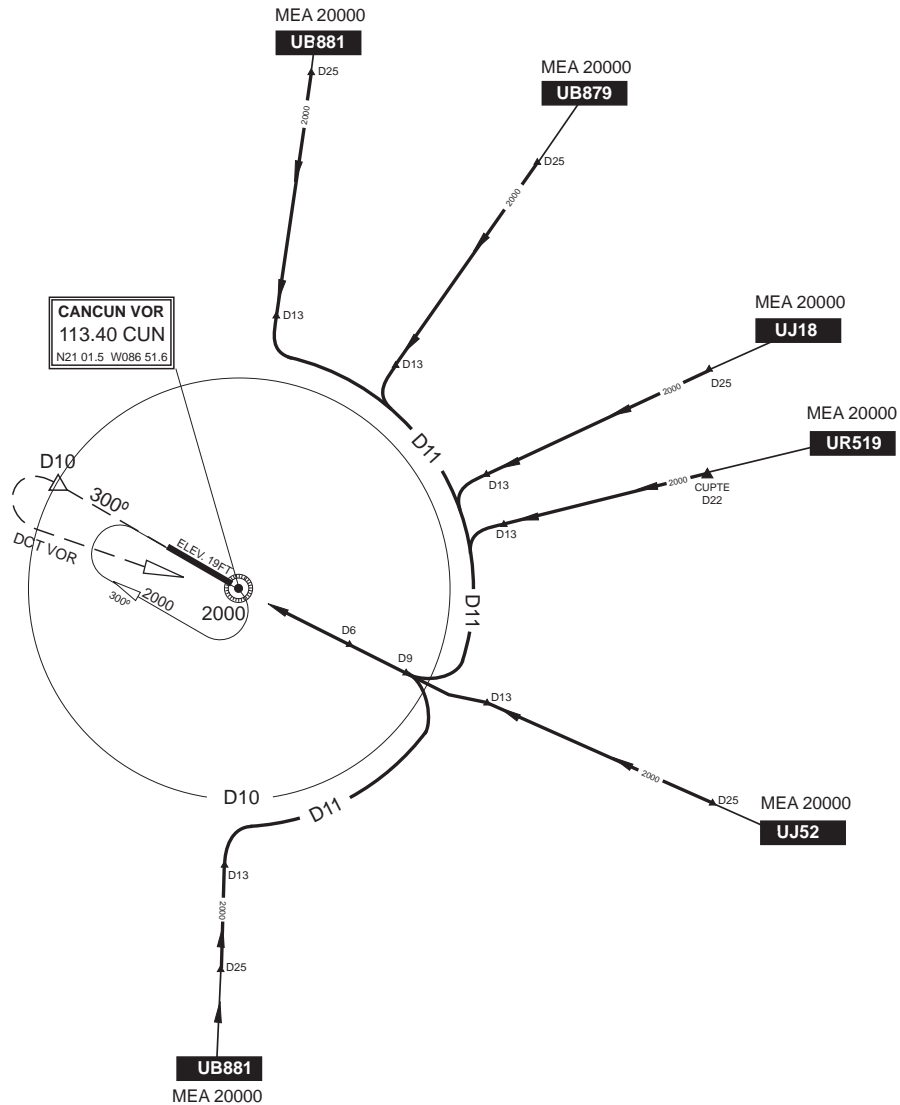
CLIMB OUTBOUND CUN VOR R-300 TO 2000FT WITH A TEARDROP TURN LEFT WITHIN 10NM VOR CUN, ON VERTICAL CUN VOR START WAITING PROCEDURE WITH RIGHT TURNS

NOT TO BE USED FOR ACTUAL NAVIGATION



MERIDA CENTER	MMID_CTR	128.30
CANCUN APROX	MMUN_APP	120.40
CANCUN TWR	MMUN_TWR	118.60
CUN VOR		113.40
ILS RWY 12		111.10

## APPROACH SYSTEM BY INSTRUMENTS VOR DME 2 / RWY30



### MISSED APPROACH

CLIMB OUTBOUND CUN VOR R-300 TO 2000FT WITH A TEARDROP TURN LEFT WITHIN 10NM VOR CUN, ON VERTICAL CUN VOR START WAITING PROCEDURE WITH RIGHT TURNS

NOT TO BE USED FOR ACTUAL NAVIGATION