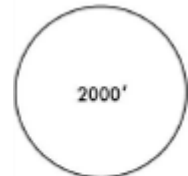


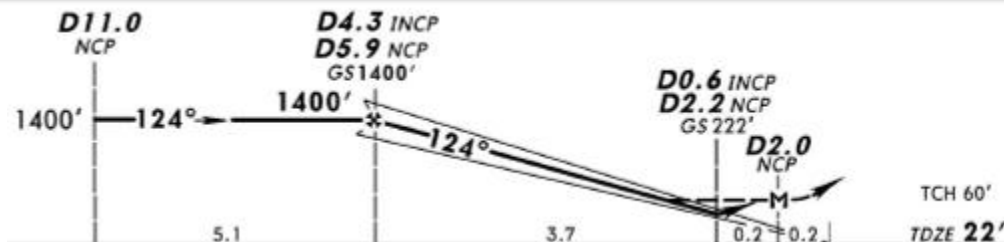
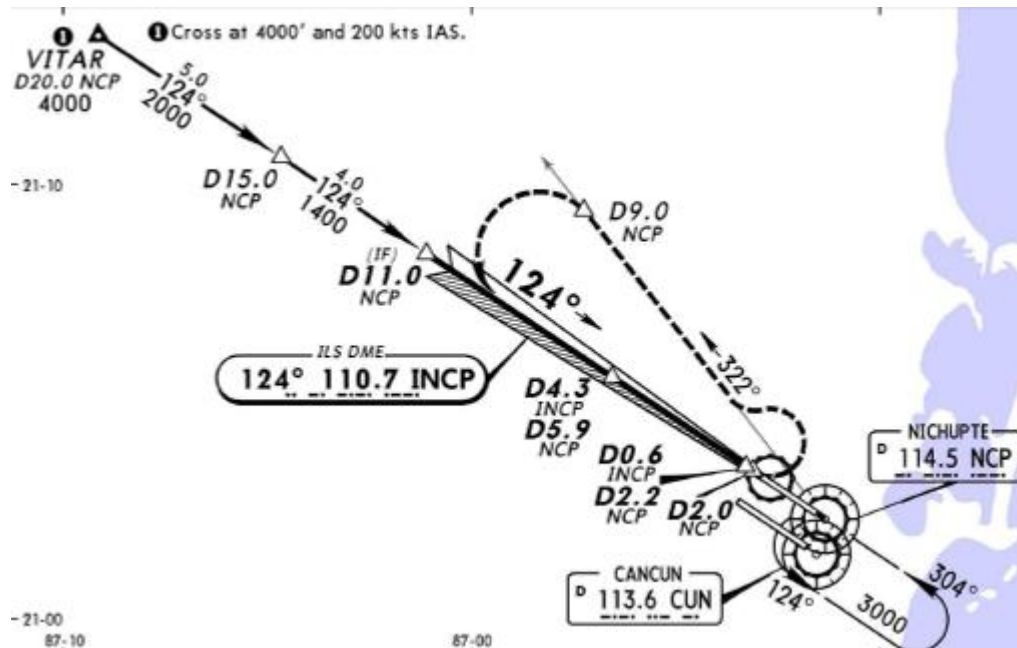
*ATIS	*CANCUN Approach (R)	CANCUN Arrival	CANCUN Tower		*Ground	
127.7	121.1	123.2	118.1	118.6	121.0	121.7

17 SEP 10
Eff 23 Sep

LOC INCP	Final Apch Crs	GS D4.3 INCP D5.9 NCP 1400' (1378')	ILS DA(H) (CONDITIONAL) 222' (200')	Apt Elev 22'
110.7	124°			TDZE 22'



MSA CUN VOR



MISSED APCH: LEFT turn to intercept NCP VOR R-322 outbound to D9.0 NCP, then turn LEFT to intercept NCP VOR R-304 inbound to NCP VOR at the minimum holding altitude.

Alt Set: MB (IN on req) TDZ Elev: 1 MB Trans level: FL 195 Trans alt: 18500'
1. DME/ILS usable with DME equipped aircraft with accurate instrument reading within 0.2 NM.