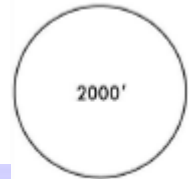


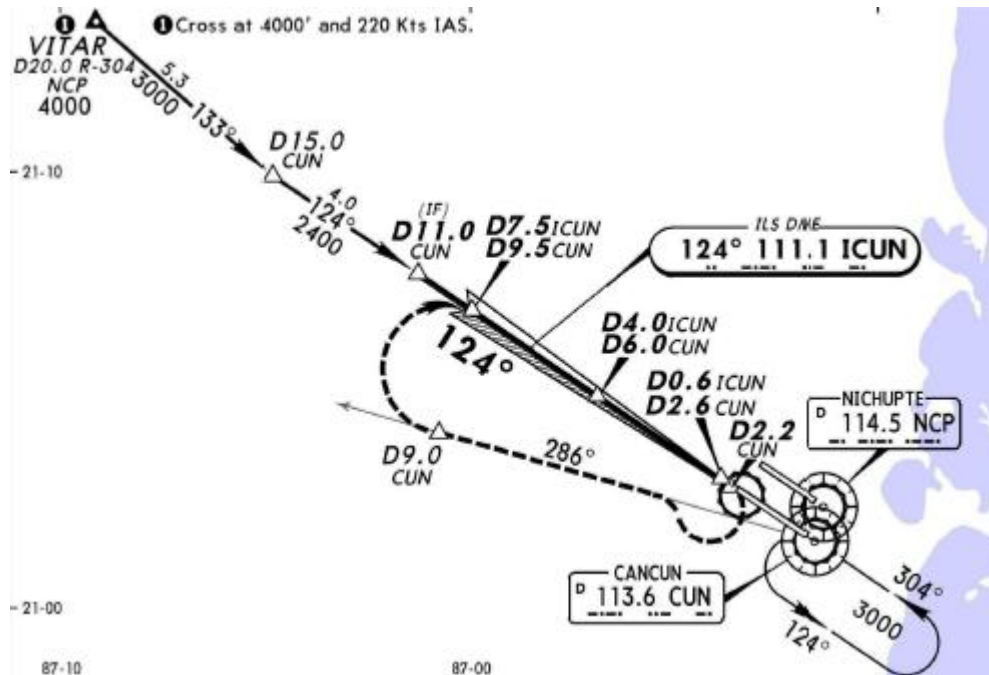
*ATIS	*CANCUN Approach (R)	CANCUN Arrival	CANCUN Tower	*Ground
127.7	121.1	123.2	118.1 118.6	121.0 121.7

17 SEP 10  
Eff 23 Sep

LOC ICUN	Final Apch Crs	GS D4.0 ICUN D6.0 CUN 1300' (1280')	ILS DA(H) (CONDITIONAL) 220' (200')	Apt Elev 22'
111.1	124°			TDZE 20'



MSA CUN VOR



**MISSED APCH:** RIGHT turn to intercept CUN VOR R-286 outbound to D9.0 CUN, then turn RIGHT to intercept CUN VOR R-304 inbound to CUN VOR to the minimum holding altitude.

Alt Set: MB (IN on req) TDZ Elev: 1 MB Trans level: FL 195 Trans alt: 18500'  
1. DME/ILS usable with DME equipped aircraft with accurate instrument reading within 0.2 NM.