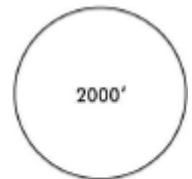
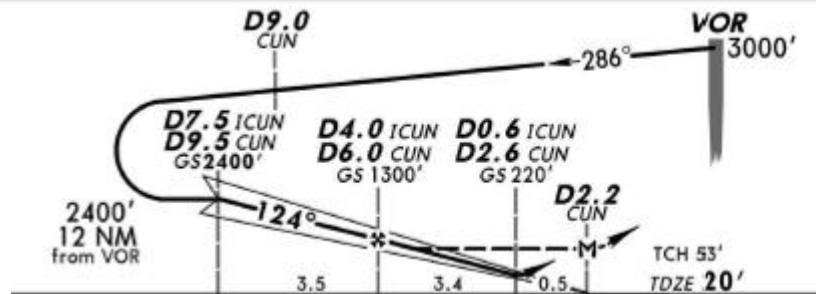
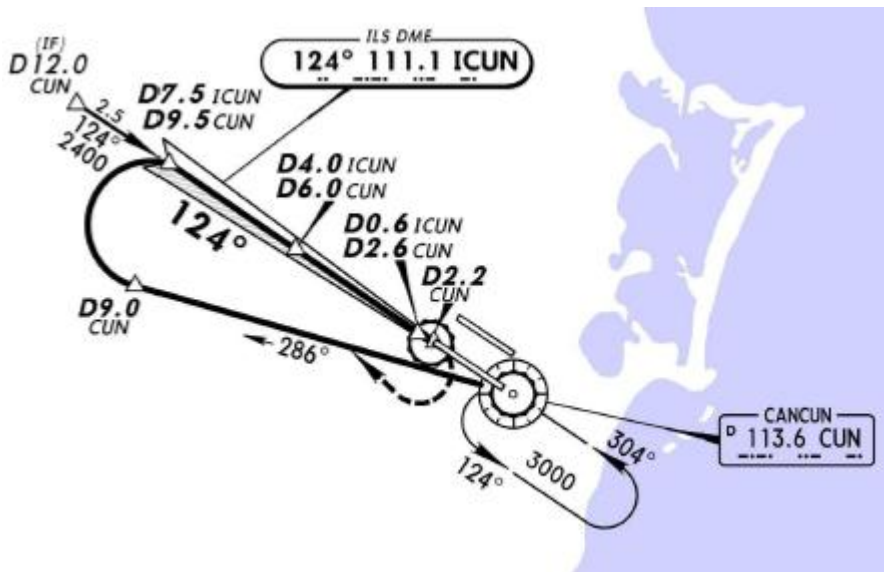


*ATIS	*CANCUN Approach (R)	CANCUN Arrival	CANCUN Tower	*Ground
127.7	121.1	123.2	118.1 118.6	121.0 121.7

LOC ICUN	Final Apch Crs	GS D4.0 ICUN D6.0 CUN	ILS DA(H) (CONDITIONAL)	Apt Elev 22'
111.1	124°	1300' (1280')	220' (200')	TDZE 20'



MSA CUN VOR



MISSED APCH: RIGHT turn to intercept CUN VOR R-286 outbound to D9.0 CUN, then turn RIGHT to intercept CUN VOR R-304 inbound to CUN VOR to the minimum holding altitude.

Alt Set: MB (IN on req) Rwy Elev: 1 MB Trans level: FL 195 Trans alt: 18500'
1. DME/ILS usable with DME equipped aircraft with accurate instrument reading within 0.2 NM.