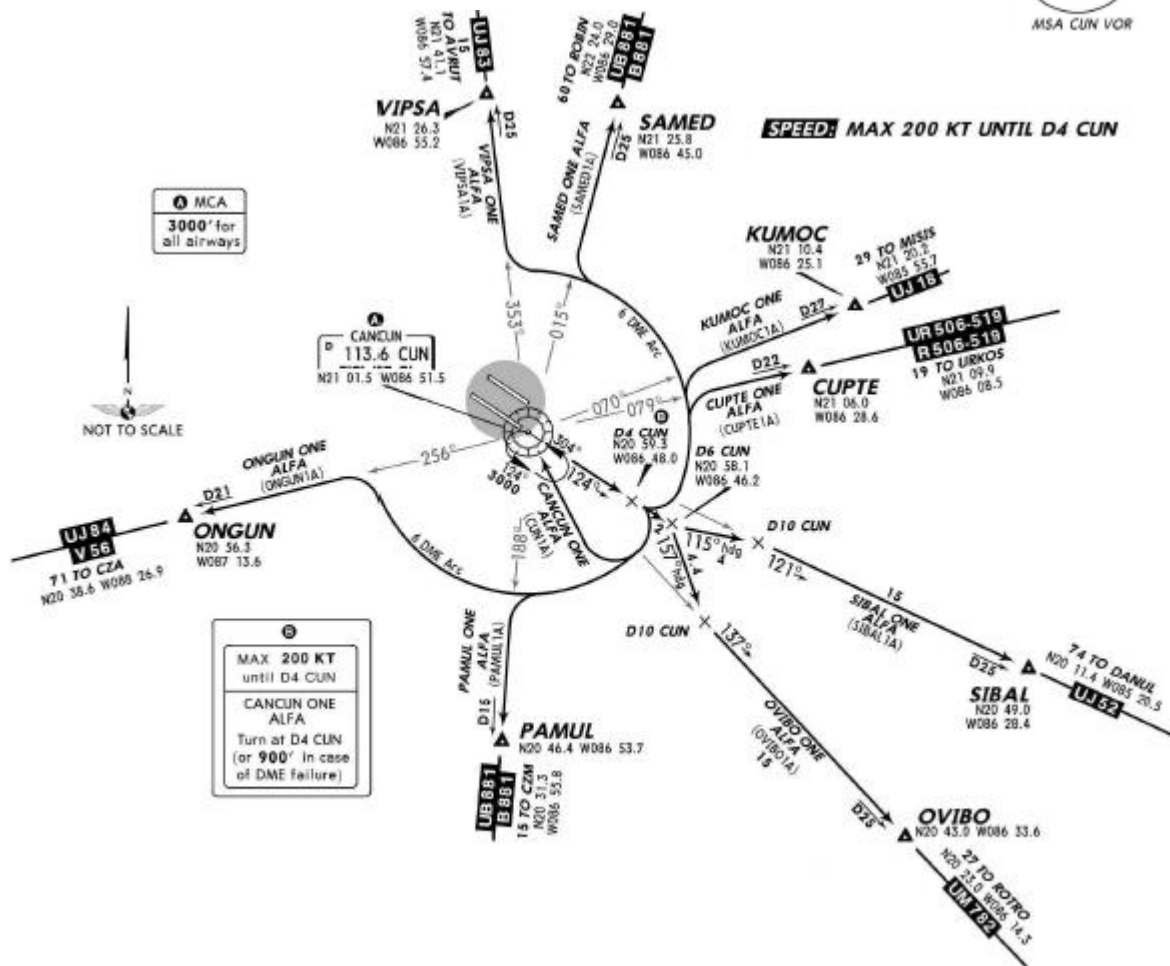


17 SEP 10  
Eff 23 Sep

## DEPARTURES RWY 12R

CANCUN ONE ALFA (CUN1A),  
CUPTÉ ONE ALFA (CUPTÉ1A),  
KUMOC ONE ALFA (KUMOC1A),  
ONGUN ONE ALFA (ONGUN1A),  
OVIBO ONE ALFA (OVIBO1A),  
PAMUL ONE ALFA (PAMUL1A),  
SAMED ONE ALFA (SAMED1A),  
SIBAL ONE ALFA (SIBAL1A),  
VIPSA ONE ALFA (VIPSA1A)

*CANCUN Departure (R)	Apt Elev	Trans level: FL195	Trans alt: 18500'
119.8	22'		



SID	INITIAL CLIMB	ALTITUDE
CANCUN ONE ALFA	Climb on CUN R-124 to D4 CUN, (or 900' in case of DME failure). Turn RIGHT within 6 NM to CUN and depart at the MCA for the assigned route or in accordance with ATC instructions.	<b>MAINTAIN 7000'</b> Continue climb in accordance with ATC instructions
CUPTÉ ONE ALFA KUMOC ONE ALFA SAMED ONE ALFA VIPSA ONE ALFA	Climb on CUN R-124 to D4 CUN. Turn LEFT on CUN 6 DME Arc to intercept the corresponding radial from CUN to CUPTÉ, KUMOC, SAMED or VIPSA. Then continue on the assigned route or in accordance with ATC instructions.	
ONGUN ONE ALFA PAMUL ONE ALFA	Climb on CUN R-124 to D4 CUN. Turn RIGHT on CUN 6 DME Arc to intercept the corresponding radial from CUN to ONGUN or PAMUL, then continue on assigned route or in accordance with ATC instructions.	
OVIBO ONE ALFA	Climb on CUN R-124 to D6 CUN. Turn RIGHT on 157° heading to intercept CUN R-137 to OVIBO. Then continue on the assigned route or in accordance with ATC instructions.	
SIBAL ONE ALFA	Climb on CUN R-124 to D6 CUN. Turn LEFT on 115° heading to intercept CUN R-121 to SIBAL. Then continue on the assigned route or in accordance with ATC instructions.	

NOT TO BE USED FOR ACTUAL NAVIGATION