

# DEPARTURES RWY 30L

CANCUN ONE DELTA (CUN1D),  
CUPTÉ ONE DELTA (CUPTÉ1D),  
KUMOC ONE DELTA (KUMOC1D),  
ONGUN ONE FOXTROT (ONGUN1F),  
OVIBO ONE DELTA (OVIBO1D),  
PAMUL ONE ECHO (PAMUL1E),  
SAMED ONE DELTA (SAMED1D),  
SIBAL ONE DELTA (SIBAL1D),  
VIPSA ONE DELTA (VIPSA1D)

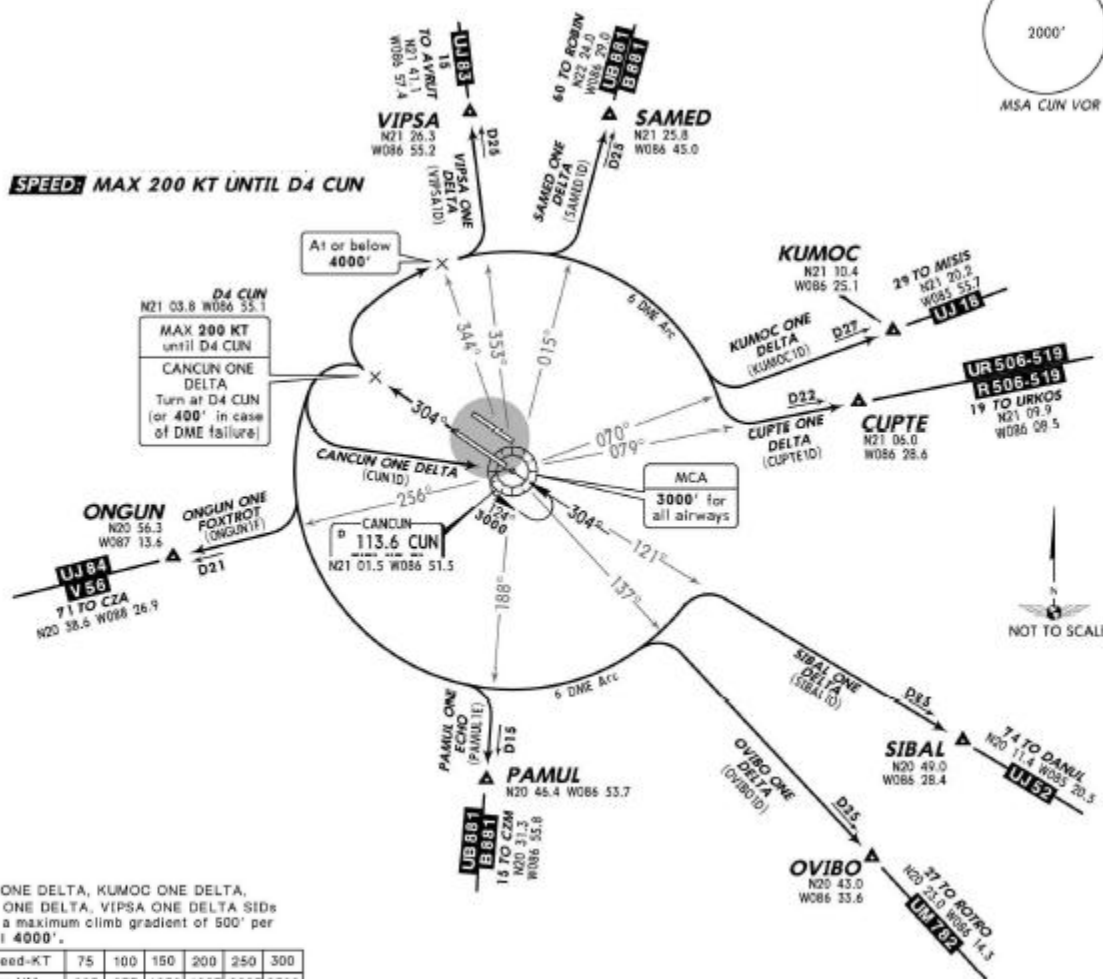
\*CANCUN Departure (R)  
119.8

Apt Elev  
22'

Trans level: FL195 Trans alt: 18500'

17 SEP 10  
Eff 23 Sep

**SPEED: MAX 200 KT UNTIL D4 CUN**



CUPTÉ ONE DELTA, KUMOC ONE DELTA, SAMED ONE DELTA, VIPSA ONE DELTA SIDs require a maximum climb gradient of 500' per NM until 4000'.

SID	INITIAL CLIMB	ALTITUDE
CANCUN ONE DELTA	Climb on CUN R-304 to D4 CUN, (or 400' in case of DME failure). Turn LEFT within 8 NM to CUN and depart at the MCA for the assigned route or in accordance with ATC instructions.	MAINTAIN 7000' Continue climb in accordance with ATC instructions
CUPTÉ ONE DELTA KUMOC ONE DELTA SAMED ONE DELTA VIPSA ONE DELTA	Climb on CUN R-304 to D4 CUN. Turn RIGHT on CUN 6 DME Arc to intercept the corresponding radial from CUN to CUPTÉ, KUMOC, SAMED or VIPSA, then continue on the assigned route or in accordance with ATC instructions.	
ONGUN ONE FOXTROT OVIBO ONE DELTA PAMUL ONE ECHO SIBAL ONE DELTA	Climb on CUN R-304 to D4 CUN. Turn LEFT on CUN 6 DME Arc to intercept the corresponding radial from CUN to ONGUN, OVIBO, PAMUL or SIBAL, then continue on assigned route or in accordance with ATC instructions.	