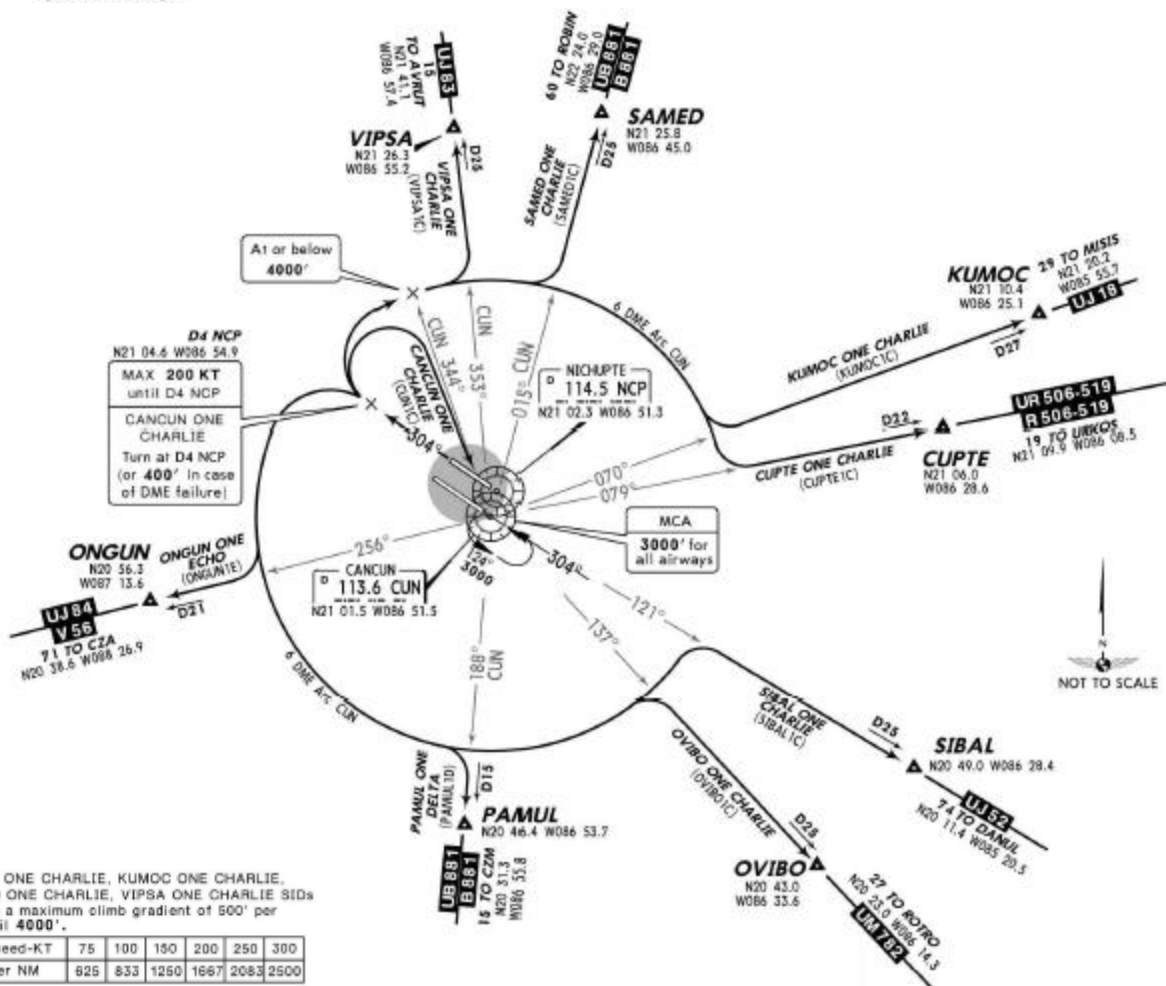


17 SEP 10
EIT 23 Sep

DEPARTURES RWY 30R

CANCUN ONE CHARLIE (CUN1C),
CUPTÉ ONE CHARLIE (CUPTÉ1C),
KUMOC ONE CHARLIE (KUMOC1C),
ONGUN ONE ECHO (ONGUN1E),
OVIBO ONE CHARLIE (OVIBO1C),
PAMUL ONE DELTA (PAMUL1D),
SAMED ONE CHARLIE (SAMED1C),
SIBAL ONE CHARLIE (SIBAL1C),
VIPSA ONE CHARLIE (VIPSA1C)

SPEED: MAX 200 KT
UNTIL D4 NCP



CUPTÉ ONE CHARLIE, KUMOC ONE CHARLIE, SAMED ONE CHARLIE, VIPSA ONE CHARLIE SIDs require a maximum climb gradient of 500' per NM until 4000'.

Gnd speed-KT	75	100	150	200	250	300
500' per NM	825	833	1250	1667	2083	2500

SID	INITIAL CLIMB	ALTITUDE
CANCUN ONE CHARLIE	Climb on NCP R-304 to D4 NCP, (or 400' in case of DME failure). Turn RIGHT within 6 NM to CUN and depart at the MCA for the assigned route or in accordance with ATC instructions.	MAINTAIN 7000' Continue climb in accordance with ATC instructions
CUPTÉ ONE CHARLIE KUMOC ONE CHARLIE SAMED ONE CHARLIE VIPSA ONE CHARLIE	Climb on NCP R-304 to D4 NCP. Turn RIGHT on CUN 6 DME Arc to intercept the corresponding radial from CUN to CUPTÉ, KUMOC, SAMED or VIPSA. Then continue on the assigned route or in accordance with ATC instructions.	
ONGUN ONE ECHO OVIBO ONE CHARLIE PAMUL ONE DELTA SIBAL ONE CHARLIE	Climb on NCP R-304 to D4 NCP. Turn LEFT on CUN 6 DME Arc to intercept the corresponding radial from CUN to ONGUN, OVIBO, PAMUL or SIBAL, then continue on assigned route or in accordance with ATC instructions.	

NOT TO BE USED FOR ACTUAL NAVIGATION