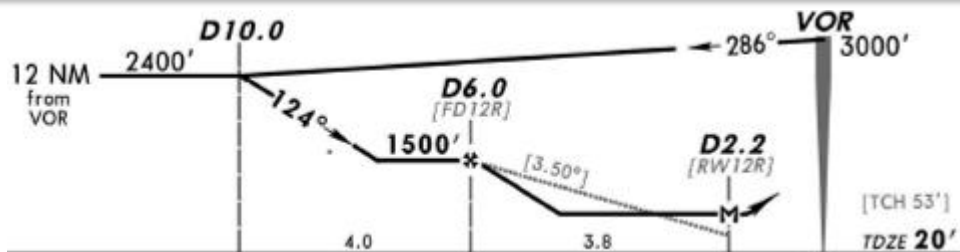
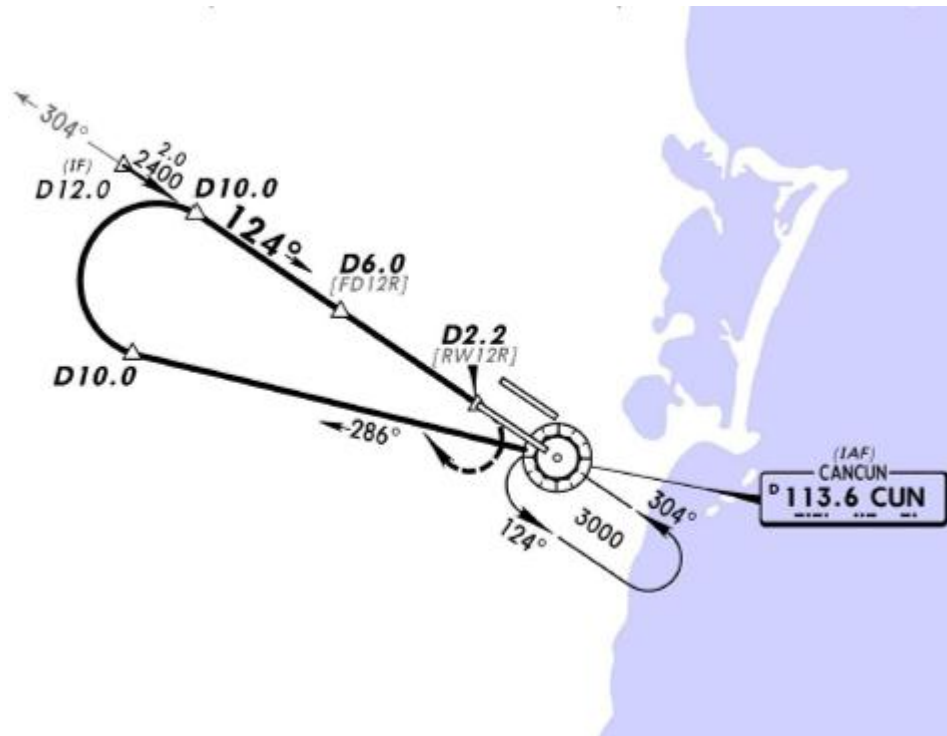


*ATIS	*CANCUN Approach (R)	CANCUN Arrival	CANCUN Tower	*Ground
127.7	121.1	123.2	118.1 118.6	121.0 121.7

17 SEP 10
Eff 23 Sep

VOR CUN	Final Apch Crs	Minimum Alt D6.0	MDA(H)	Apt Elev 22'
113.6	124°	1500' (1480')	420' (400')	TDZE 20'



MISSED APCH: RIGHT turn to intercept CUN VOR R-286 outbound, at D10.0 turn RIGHT to intercept CUN VOR R-304 inbound to CUN VOR to the minimum holding altitude.

Alt Set: MB (IN on req) Rwy Elev: 1 MB Trans level: FL 195 Trans alt: 18500'