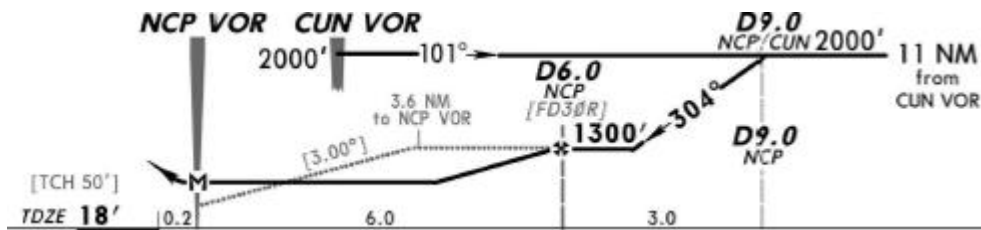
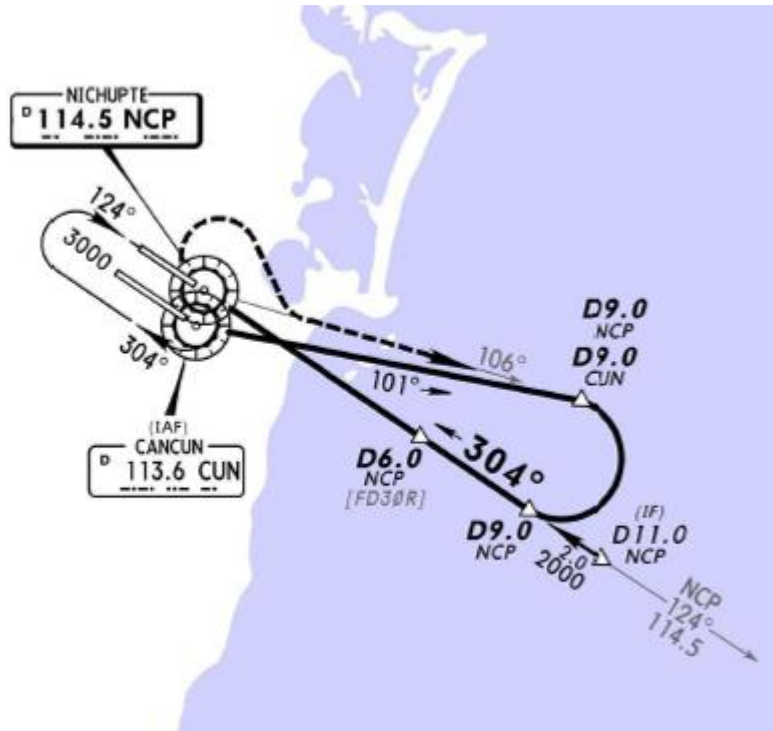
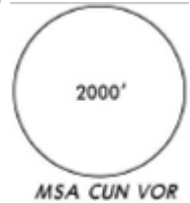


*ATIS	*CANCUN Approach (R)	CANCUN Arrival	CANCUN Tower	*Ground
127.7	121.1	123.2	118.1 118.6	121.0 121.7

17 SEP 10
Eff 23 Sep

VOR NCP 114.5	Final Apch Crs 304°	Minimum Alt D6.0 NCP 1300' (1282')	MDA(H) 420' (402')	Apt Elev 22' TDZE 18'
---------------------	---------------------------	--	-----------------------	--------------------------



MISSED APCH: RIGHT turn to intercept NCP VOR R-106, at D9.0 NCP turn RIGHT to intercept NCP VOR R-124° to NCP VOR minimum holding altitude.

Alt Set: MB (IN on req) Apt Elev: 1 MB Trans level: FL 195 Trans alt: 18500'