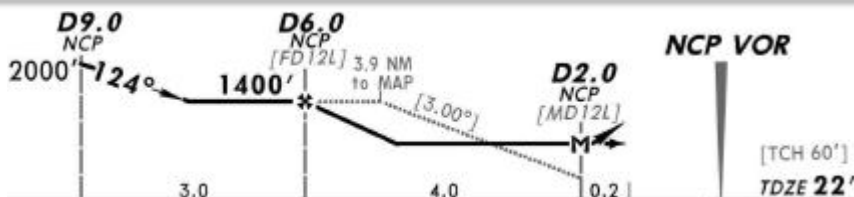
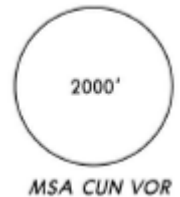


17 SEP 10
Eff 23 Sep

*ATIS	*CANCUN Approach (R)	CANCUN Arrival	CANCUN Tower	*Ground
127.7	121.1	123.2	118.1 118.6	121.0 121.7

VOR NCP 114.5	Final Apch Crs 124°	Minimum Alt D6.0 NCP 1400' (1378')	MDA(H) 420' (398')	Apt Elev 22' TDZE 22'
---------------------	---------------------------	--	-----------------------	--------------------------



MISSED APCH: LEFT turn to intercept NCP VOR R-322 to D9.0 NCP, then turn LEFT to intercept NCP VOR R-304 inbound to NCP VOR to the minimum holding altitude.

Alt Set: MB (IN on req) TDZ Elev: 1 MB Trans level: FL 195 Trans alt: 18500'