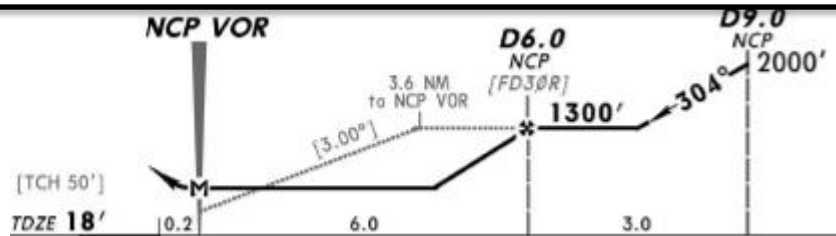
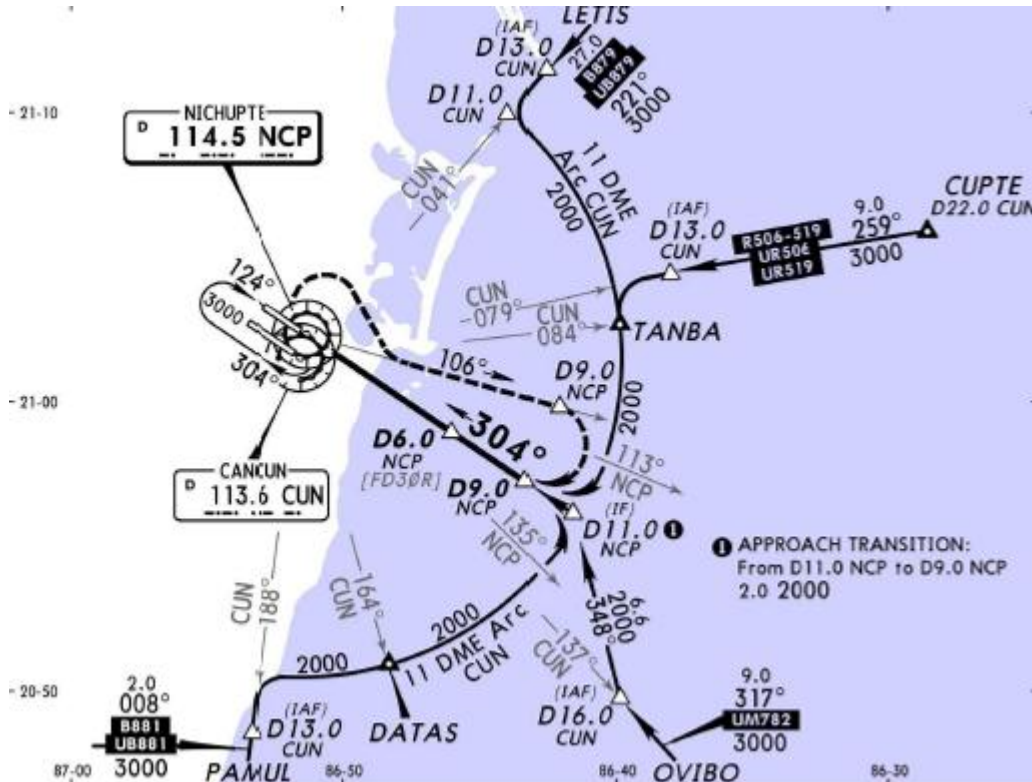


17 SEP 10
Eff 23 Sep

*ATIS	*CANCUN Approach (R)	CANCUN Arrival	CANCUN Tower	*Ground
127.7	121.1	123.2	118.1 118.6	121.0 121.7

VOR NCP	Final Apch Crs	Minimum Alt D6.0 NCP	MDA(H)	Apt Elev 22'
114.5	304°	1300' (1282')	420' (402')	TDZE 18'



MISSED APCH: RIGHT turn to intercept NCP VOR R-106, at D9.0 NCP turn RIGHT to intercept NCP VOR R-124 to NCP VOR to minimum holding altitude.

Alt Set: MB (IN on req) Apt Elev: 1 MB Trans level: FL 195 Trans alt: 18500'