

*CANCUN Departure (ft)

119.8

Apr Elev
20'

Trans level: FL 195

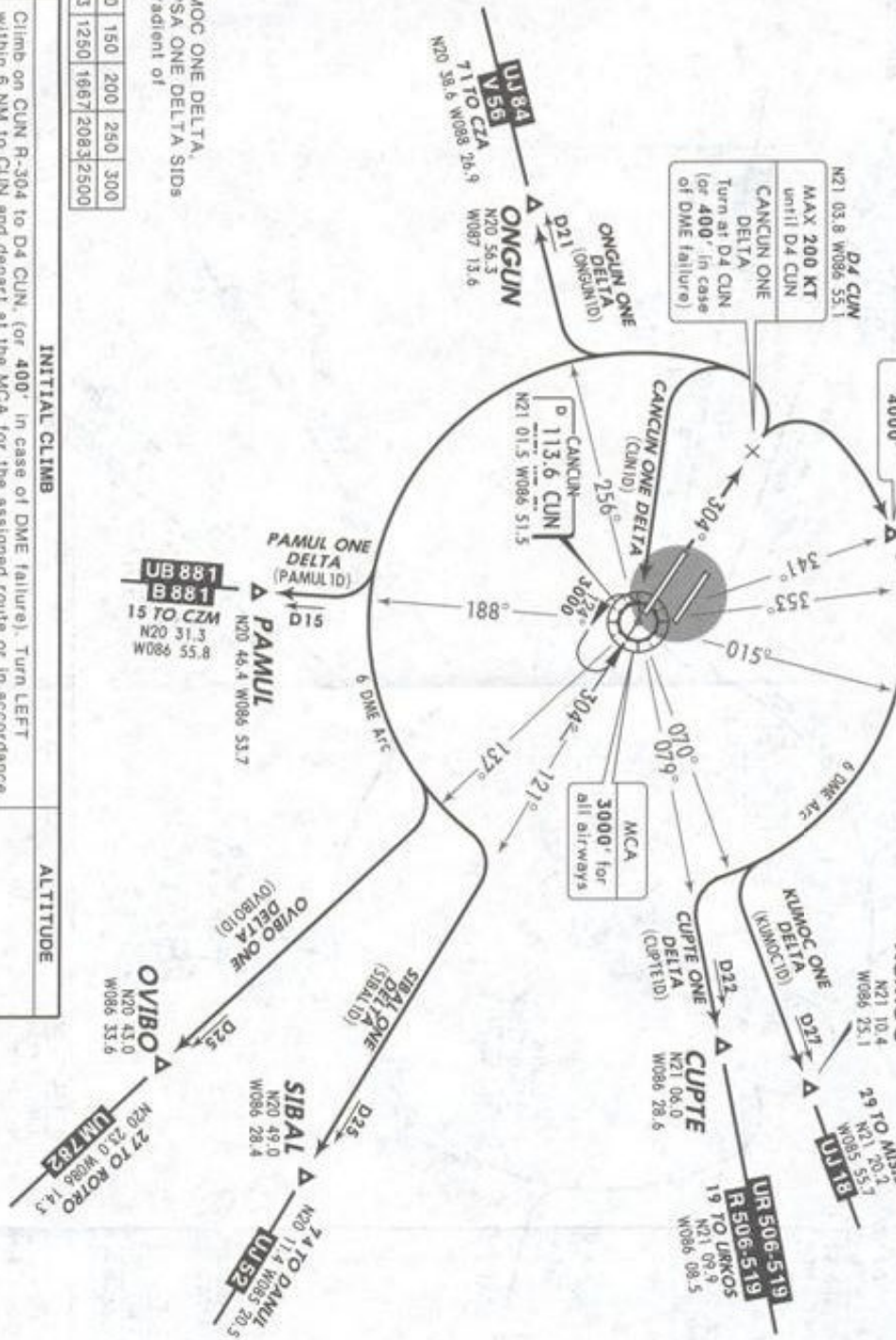
Trans alt: 18500'



DEPARTURES RWY 30L

CANCUN ONE DELTA (CUNID),
CUPTU ONE DELTA (CUPTID),
KUMOC ONE DELTA (KUMOCID),
ONGUN ONE DELTA (ONGUNID),
OVIBO ONE DELTA (OVIBOID),
PAMUL ONE DELTA (PAMULID),
SAMED ONE DELTA (SAMEDID),
SIBAL ONE DELTA (SIBALID),
VIPSA ONE DELTA (VIPSAID)

SPEED: MAX 200 KT UNTIL D4 CUN



CUPTU ONE DELTA, KUMOC ONE DELTA,
SAMED ONE DELTA, VIPSA ONE DELTA SIDs
require minimum climb gradient of
500' per NM until 4000'.

Ind speed-KT	75	100	150	200	250	300
500' per NM	625	833	1250	1667	2083	2500

SID	INITIAL CLIMB	ALTITUDE
CANCUN ONE DELTA	Climb on CUN R-304 to D4 CUN, (or 400' in case of DME failure). Turn LEFT within 5 NM to CUN and depart at the MCA for the assigned route or in accordance with ATC instructions.	MAINTAIN 7000'. Continue climb in accordance with ATC instructions
CUPTU ONE DELTA	Climb on CUN R-304 to D4 CUN. Turn RIGHT on CUN 6 DME Arc to intercept the corresponding radial from CUN to CUPTU. KUMOC, SAMED or VIPSA, then continue on the assigned route or in accordance with ATC instructions.	
KUMOC ONE DELTA	Climb on CUN R-304 to D4 CUN. Turn RIGHT on CUN 6 DME Arc to intercept the corresponding radial from CUN to KUMOC. SAMED or VIPSA, then continue on the assigned route or in accordance with ATC instructions.	
SAMED ONE DELTA	Climb on CUN R-304 to D4 CUN. Turn LEFT on CUN 6 DME Arc to intercept the corresponding radial from CUN to SAMED. PAMUL or SIBAL, then continue on assigned route or in accordance with ATC instructions.	
ONGUN ONE DELTA		
OVIBO ONE DELTA		
PAMUL ONE DELTA		
SIBAL ONE DELTA		